

Ver correcciones manuscritas GEN 0.5
See hand amendments on section GEN 0.5

CARTA DE LLEGADA NORMALIZADA
VUELO POR INSTRUMENTOS (STAR)-OACI

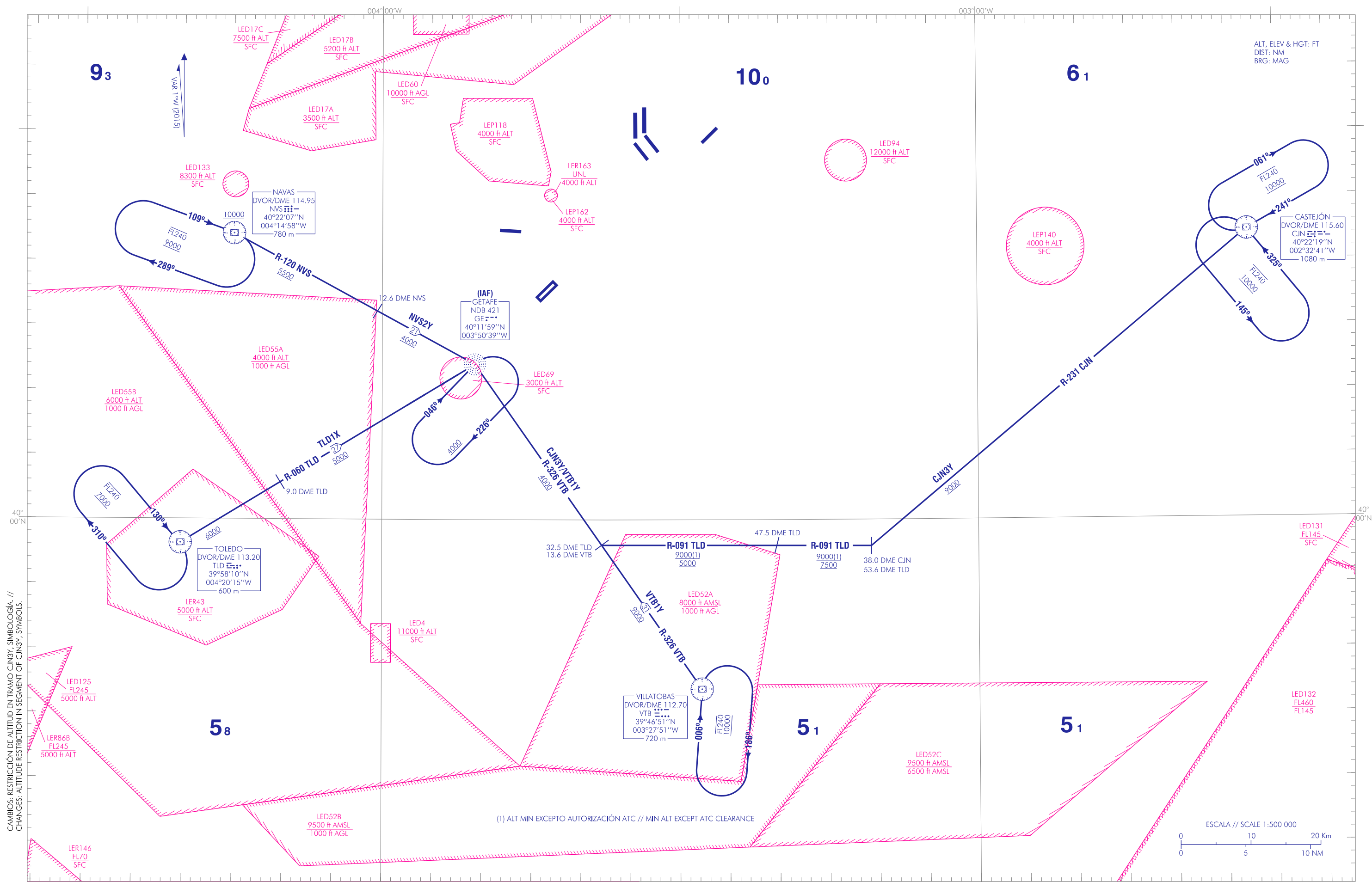
TA 13000

NORTE 118.750
OESTE 127.100
ESTE 118.400

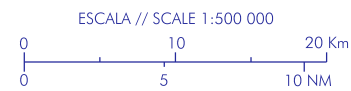
APP DESPEGUES OESTE 131.175
TWR 129.925

MADRID/Getafe
RWY 05/23

CJN3Y NVS2Y
TLD1X VTB1Y



CMBIOS: RESTRICCIÓN DE ALTITUD EN TRAMO CJN3Y. SIMBOLOGÍA. //
CHANGES: ALTITUDE RESTRICTION IN SEGMENT OF CJN3Y. SYMBOLS.



INTENCIONADAMENTE EN BLANCO
INTENTIONALLY BLANK

MADRID/Getafe AD

LLEGADAS NORMALIZADAS POR INSTRUMENTOS (STAR)

PISTA 05/23

→ LLEGADA CASTEJÓN TRES YANKEE (CJN3Y)
DVOR/DME CJN, R-231/38.0 DME CJN, R-091/32.5 DME TLD,
R-326 VTB, NDB GE (IAF).

LLEGADA NAVAS DOS YANKEE (NVS2Y)
DVOR/DME NVS, NDB GE (IAF).

→ LLEGADA TOLEDO UNO X-RAY (TLD1X)
DVOR/DME TLD, NDB GE (IAF).

→ LLEGADA VILLATOBAS UNO YANKEE (VTB1Y)
DVOR/DME VTB, NDB GE (IAF).

STANDARD INSTRUMENT ARRIVALS (STAR)

RUNWAY 05/23

CASTEJÓN THREE YANKEE ARRIVAL (CJN3Y)
DVOR/DME CJN, R-231/38.0 DME CJN, R-091/32.5 DME TLD,
R-326 VTB, NDB GE (IAF).

NAVAS TWO YANKEE ARRIVAL (NVS2Y)
DVOR/DME NVS, NDB GE (IAF).

TOLEDO ONE X-RAY ARRIVAL (TLD1X)
DVOR/DME TLD, NDB GE (IAF).

VILLATOBAS ONE YANKEE ARRIVAL (VTB1Y)
DVOR/DME VTB, NDB GE (IAF).

INTENCIONADAMENTE EN BLANCO
INTENTIONALLY BLANK