

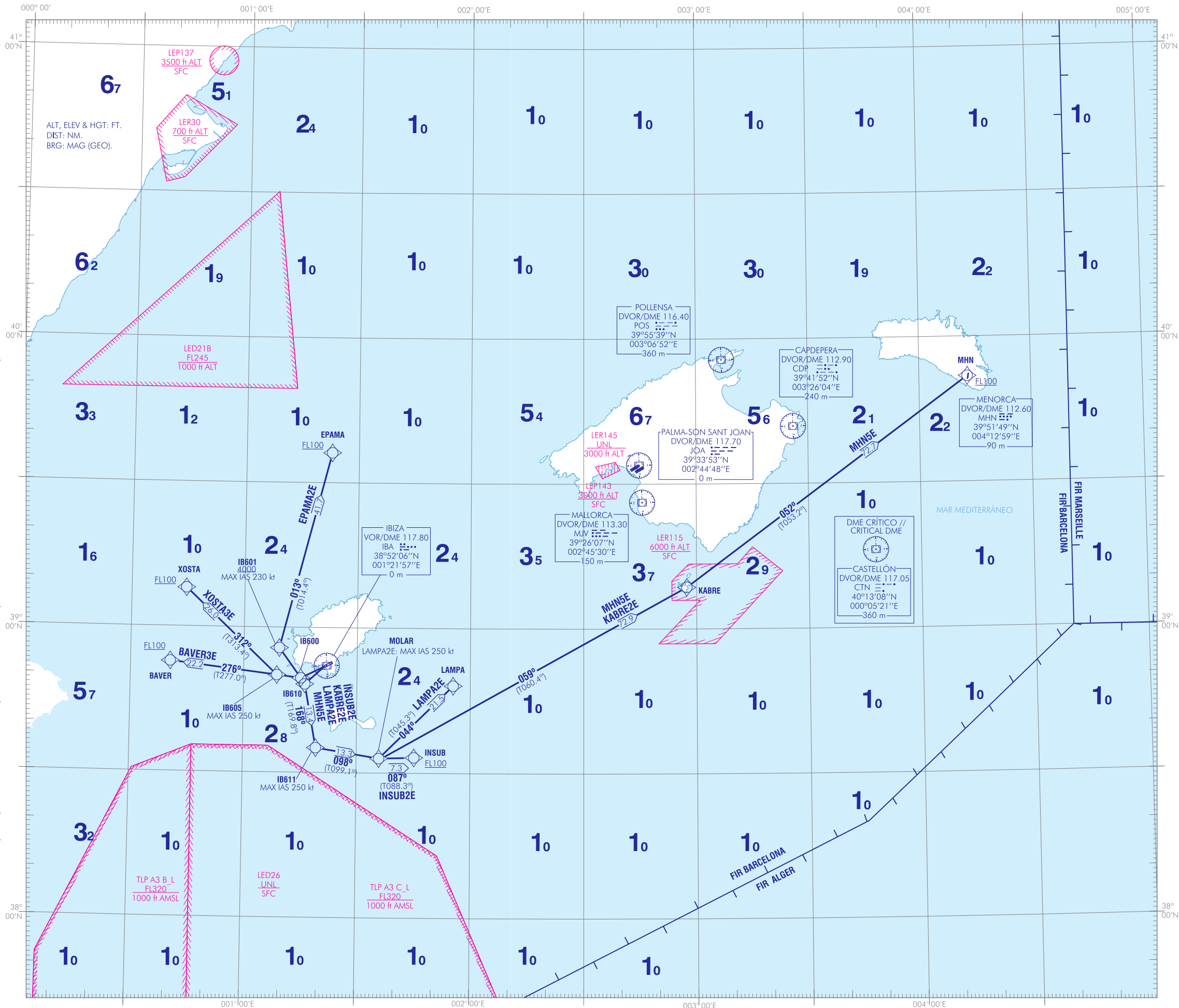
CARTA DE SALIDA NORMALIZADA  
VUELO POR INSTRUMENTOS (SID) RNAV1 - OACI

TA 6000  
VAR 1°23'E (2020)

APP 134.825  
TWR 118.500

BAVER3E EPAMA2E INSUB2E  
LAMPA2E MHN5E XOSTA3E  
IBIZA  
RWY 24  
KABRE2E

CAMBIOS: DECLINACIÓN MAGNÉTICA, AMA, ACTUALIZACIÓN DE RUMBOS, LIMITE SUPERIOR LER115, COORDENADAS DEL DVOR EN LUGAR DEL DME, ZONAS TLP.  
CHANGES: MAGNETIC VARIATION, AMA, UPDATE OF HEADINGS, UPPER LIMIT LER115, COORDINATES OF THE DVOR INSTEAD OF THE DME, TLP AREAS.

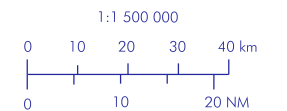
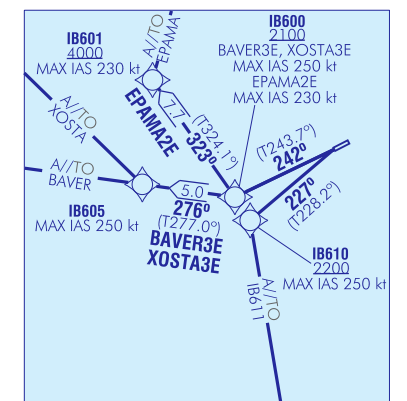


NOTAS:

- SE REQUIERE APROBACIÓN RNAV1.
- RNAV1 (DME/DME) DME CTN CRÍTICO.
- RNAV1 (DME/DME/IRU) SIN DME CRÍTICO.
- NOTAS, RESTRICCIONES: VER DESCRIPCIÓN TEXTUAL.

NOTES:

- RNAV1 APPROVAL REQUIRED.
- CRITICAL RNAV1 (DME/DME) DME CTN.
- RNAV1 (DME/DME/IRU) WITHOUT CRITICAL DME.
- NOTES, RESTRICTIONS: SEE TEXTUAL DESCRIPTION.



**INTENCIONADAMENTE EN BLANCO**  
**INTENTIONALLY BLANK**

IBIZA AD

| COORDENADAS WAYPOINTS // WAYPOINTS COORDINATES |                            |
|--|----------------------------|
| WPT  | COORD                      |
| BAVER  | 38°52'47.4"N 000°40'30.0"E |
| EPAMA  | 39°36'11.3"N 001°22'49.4"E |
| IB600  | 38°49'32.1"N 001°15'08.0"E |
| IB601  | 38°55'44.9"N 001°09'22.0"E |
| IB605  | 38°50'08.7"N 001°08'46.6"E |
| IB610  | 38°48'17.9"N 001°16'12.3"E |
| IB611  | 38°35'08.2"N 001°19'14.0"E |
| INSUB  | 38°33'13.5"N 001°45'11.3"E |
| KABRE  | 39°08'36.6"N 002°57'23.8"E |
| LAMPA  | 38°48'06.5"N 001°55'26.6"E |
| MHN  | 39°51'49.1"N 004°12'58.1"E |
| MOLAR  | 38°33'00.6"N 001°35'55.9"E |
| XOSTA  | 39°07'59.1"N 000°44'30.2"E |

SALIDAS NORMALIZADAS POR INSTRUMENTOS (SID) RNAV1

PISTA 24

NOTAS APLICABLES A TODAS LAS SID:

- Se requiere aprobación RNAV1.
- Velocidad máxima 250 kt a FL100 o inferior.
- Pendiente mínima de ascenso debida a motivos operacionales.

STANDARD INSTRUMENT DEPARTURES (SID) RNAV1

RUNWAY 24

NOTES APPLICABLE TO ALL SID:

- RNAV1 approval required.
- Maximum speed 250 kt at FL100 or below.
- Minimum climb gradient due to operational reasons.

DESCRIPCIÓN TABULAR DEL PROCEDIMIENTO  
PROCEDURE TABULAR DESCRIPTION

| Número de serie<br>Serial number  | Descriptor de trayectoria<br>Path Terminator | Identificador de punto de recorrido<br>Waypoint identifier | Sobrevuelo<br>Fly-over | Curso/Derrota<br>Course/Track<br>°M (°T) | Variación magnética<br>Magnetic variation | Distancia<br>Distance<br>(NM) | Dirección de viraje<br>Turn direction | Altitud<br>Altitude<br>(ft) | Velocidad<br>Speed<br>(kt) | VPA/TCH<br>(°/ft) | Especificación de navegación<br>Navigation specification |
|---|--|--|------------------------|--|---|-------------------------------|---------------------------------------|-----------------------------|----------------------------|-------------------|--|
| <b>BAVER3E RNAV1</b><br>Pendiente mínima de ascenso: 6.2% hasta IB600. // Minimum climb gradient of 6.2% up to IB600.<br>Autorización inicial ATC: Ascender hasta 6000 ft y esperar posterior autorización. // Initial ATC clearance: Climb up to 6000 ft and wait for further clearance.   |  |  |                        |  |   |                               |                                       |                             |                            |                   |  |
| 001   | CF   | IB600  | –                      | 242 (243.7)                              | -1.4                                      | –                             | R                                     | +2100                       | -250                       | –                 | RNAV1  |
| 002   | TF   | IB605  | –                      | 276 (277.0)                              | -1.4                                      | 5.0                           | –                                     | –                           | -250                       | –                 | RNAV1  |
| 003   | TF   | BAVER  | –                      | 276 (277.0)                              | -1.4                                      | 22.2                          | –                                     | +FL100                      | –                          | –                 | RNAV1  |
| <b>EPAMA2E RNAV1</b><br>Pendiente mínima de ascenso: 6.2% hasta 4000 ft. // Minimum climb gradient of 6.2% up to 4000 ft.<br>Autorización inicial ATC: Ascender hasta 6000 ft y esperar posterior autorización. // Initial ATC clearance: Climb up to 6000 ft and wait for further clearance.   |  |  |                        |  |   |                               |                                       |                             |                            |                   |  |
| 001   | CF   | IB600  | –                      | 242 (243.7)                              | -1.4                                      | –                             | R                                     | +2100                       | -230                       | –                 | RNAV1  |
| 002   | TF   | IB601  | –                      | 323 (324.1)                              | -1.4                                      | 7.7                           | R                                     | +4000                       | -230                       | –                 | RNAV1  |
| 003   | TF   | EPAMA  | –                      | 013 (014.4)                              | -1.4                                      | 41.7                          | –                                     | +FL100                      | –                          | –                 | RNAV1  |
| <b>INSUB2E RNAV1</b><br>Pendiente mínima de ascenso: 6.5% hasta IB610. // Minimum climb gradient of 6.5% up to IB610.<br>Pendiente mínima de ascenso: 3.8% desde IB610 hasta FL100. // Minimum climb gradient of 3.8% from IB610 up to FL100.<br>Autorización inicial ATC: Ascender hasta 6000 ft y esperar posterior autorización. // Initial ATC clearance: Climb up to 6000 ft and wait for further clearance. |  |  |                        |  |   |                               |                                       |                             |                            |                   |  |
| 001   | CF   | IB610  | –                      | 227 (228.2)                              | -1.4                                      | –                             | L                                     | +2200                       | -250                       | –                 | RNAV1  |
| 002   | TF   | IB611  | –                      | 168 (169.8)                              | -1.4                                      | 13.4                          | L                                     | –                           | -250                       | –                 | RNAV1  |
| 003   | TF   | MOLAR  | –                      | 098 (099.1)                              | -1.4                                      | 13.3                          | L                                     | –                           | –                          | –                 | RNAV1  |
| 004   | TF   | INSUB  | –                      | 087 (088.3)                              | -1.4                                      | 7.3                           | –                                     | +FL100                      | –                          | –                 | RNAV1  |
| <b>KABRE2E RNAV1</b><br>Pendiente mínima de ascenso: 6.5% hasta IB610. // Minimum climb gradient of 6.5% up to IB610.<br>Autorización inicial ATC: Ascender hasta 6000 ft y esperar posterior autorización. // Initial ATC clearance: Climb up to 6000 ft and wait for further clearance.   |  |  |                        |  |   |                               |                                       |                             |                            |                   |  |
| 001   | CF   | IB610  | –                      | 227 (228.2)                              | -1.4                                      | –                             | L                                     | +2200                       | -250                       | –                 | RNAV1  |
| 002   | TF   | IB611  | –                      | 168 (169.8)                              | -1.4                                      | 13.4                          | L                                     | –                           | -250                       | –                 | RNAV1  |
| 003   | TF   | MOLAR  | –                      | 098 (099.1)                              | -1.4                                      | 13.3                          | L                                     | –                           | –                          | –                 | RNAV1  |
| 004   | TF   | KABRE  | –                      | 059 (060.4)                              | -1.4                                      | 72.9                          | –                                     | –                           | –                          | –                 | RNAV1  |
| <b>LAMPA2E RNAV1</b><br>Pendiente mínima de ascenso: 6.5% hasta IB610. // Minimum climb gradient of 6.5% up to IB610.<br>Autorización inicial ATC: Ascender hasta 6000 ft y esperar posterior autorización. // Initial ATC clearance: Climb up to 6000 ft and wait for further clearance.   |  |  |                        |  |   |                               |                                       |                             |                            |                   |  |
| 001   | CF   | IB610  | –                      | 227 (228.2)                              | -1.4                                      | –                             | L                                     | +2200                       | -250                       | –                 | RNAV1  |
| 002   | TF   | IB611  | –                      | 168 (169.8)                              | -1.4                                      | 13.4                          | L                                     | –                           | -250                       | –                 | RNAV1  |
| 003   | TF   | MOLAR  | –                      | 098 (099.1)                              | -1.4                                      | 13.3                          | L                                     | –                           | -250                       | –                 | RNAV1  |
| 004   | TF   | LAMPA  | –                      | 044 (045.3)                              | -1.4                                      | 21.5                          | –                                     | –                           | –                          | –                 | RNAV1  |
| <b>MHN5E RNAV1</b><br>Pendiente mínima de ascenso: 6.5% hasta IB500. // Minimum climb gradient of 6.5% up to IB500.<br>Autorización inicial ATC: Ascender hasta 6000 ft y esperar posterior autorización. // Initial ATC clearance: Climb up to 6000 ft and wait for further clearance.   |  |  |                        |  |   |                               |                                       |                             |                            |                   |  |
| 001   | CF   | IB610  | –                      | 227 (228.2)                              | -1.4                                      | –                             | L                                     | +2200                       | -250                       | –                 | RNAV1  |
| 002   | TF   | IB611  | –                      | 168 (169.8)                              | -1.4                                      | 13.4                          | L                                     | –                           | -250                       | –                 | RNAV1  |
| 003   | TF   | MOLAR  | –                      | 098 (099.1)                              | -1.4                                      | 13.3                          | L                                     | –                           | –                          | –                 | RNAV1  |
| 004   | TF   | KABRE  | –                      | 059 (060.4)                              | -1.4                                      | 72.9                          | L                                     | –                           | –                          | –                 | RNAV1  |
| 005   | TF   | MHN  | –                      | 052 (053.2)                              | -1.4                                      | 72.7                          | –                                     | +FL100                      | –                          | –                 | RNAV1  |
| <b>XOSTA3E RNAV1</b><br>Pendiente mínima de ascenso: 6.2% hasta IB600. // Minimum climb gradient of 6.2% up to IB600.<br>Pendiente mínima de ascenso: 4.3% desde IB600 hasta FL100. // Minimum climb gradient of 4.3% from IB600 up to FL100.<br>Autorización inicial ATC: Ascender hasta 6000 ft y esperar posterior autorización. // Initial ATC clearance: Climb up to 6000 ft and wait for further clearance. |  |  |                        |  |   |                               |                                       |                             |                            |                   |  |
| 001   | CF   | IB600  | –                      | 242 (243.7)                              | -1.4                                      | –                             | R                                     | +2100                       | -250                       | –                 | RNAV1  |
| 002   | TF   | IB605  | –                      | 276 (277.0)                              | -1.4                                      | 5.0                           | R                                     | –                           | -250                       | –                 | RNAV1  |
| 003   | TF   | XOSTA  | –                      | 312 (313.4)                              | -1.4                                      | 26.0                          | –                                     | +FL100                      | –                          | –                 | RNAV1  |

**SALIDA DE CONTINGENCIA**

Guía vectorial radar: Proporcionada por Ibiza APP para incorporarse a la ruta ATS.

Subir en rumbo de pista hasta 3000 ft AMSL. Virar siguiendo instrucciones ATC.

Pendiente mínima de ascenso 4.6% hasta 3000 ft AMSL.

En caso de fallo de comunicaciones, proceder según lo establecido en la sección ENR 1.8, apartado "Fallo de las Comunicaciones Aeroterrestres" de AIP-ESPAÑA.

**CONTINGENCY DEPARTURE**

Radar vectoring guidance: Provided by Ibiza APP to join the ATS route.

Climb on runway heading up to 3000 ft AMSL. Turn following the ATC instructions.

Minimum climb gradient of 4.6% up to 3000 ft AMSL.

In case of communication failure, proceed according to the established in section ENR 1.8, item "Air-ground Communication Failure" in AIP-ESPAÑA.

| OBSTÁCULOS SIGNIFICATIVOS // SIGNIFICANT OBSTACLES |     |                     |                       |          |           |
|--|-----|---------------------|-----------------------|----------|-----------|
| OBSTÁCULOS<br>OBSTACLES                            | RWY | LATITUD<br>LATITUDE | LONGITUD<br>LONGITUDE | HGT (ft) | ELEV (ft) |
| Curva de nivel // Contour line                     | 24  | 38°52'25.1"N        | 001°14'28.2"E         | 0        | 495       |
| Cota // Spot elevation                             | 24  | 38°51'59.3"N        | 001°12'00.9"E         | 0        | 1247      |

**INTENCIONADAMENTE EN BLANCO**  
**INTENTIONALLY BLANK**