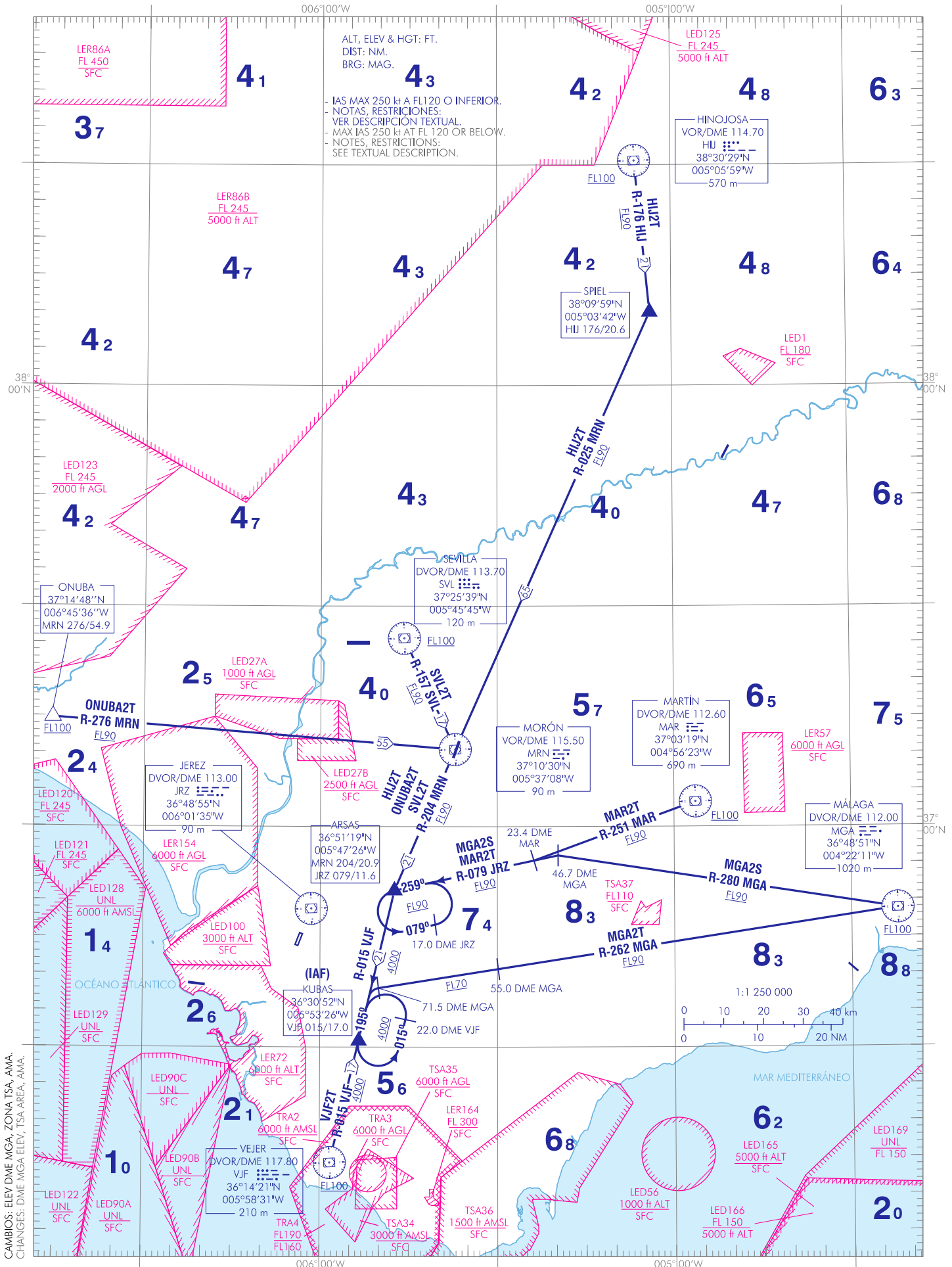


CARTA DE LLEGADA NORMALIZADA
VUELO POR INSTRUMENTOS (STAR)-OACI VAR 1°W (2020)

APP 128.500
TWR 118.550
TA 6000

HJU2T MGA2S MGA2T MAR2T
ONUBA2T SVL2T VJF2T



CAMBIOS: ELEV DME MGA, ZONA TSA, AMA.
CHANGES: DME MGA ELEV, TSA AREA, AMA.

JEREZ AD

LLEGADAS NORMALIZADAS POR INSTRUMENTOS (STAR)

STANDARD INSTRUMENTS ARRIVALS (STAR)

PISTA 02

RUNWAY 02

NOTAS APLICABLES A TODAS LAS STAR:

- IAS MAX 250 kt a FL120 o inferior.

NOTES APPLICABLE TO ALL STAR:

- MAX IAS 250 kt at FL120 or below.

LLEGADA HINOJOSA DOS TANGO (HIJ2T)

VOR/DME HIJ, SPIEL, VOR/DME MRN, ARSAS, KUBAS (IAF).

HINOJOSA TWO TANGO ARRIVAL (HIJ2T)

VOR/DME HIJ, SPIEL, VOR/DME MRN, ARSAS, KUBAS (IAF).

LLEGADA MÁLAGA DOS SIERRA (MGA2S)

→ DVOR/DME MGA, R-280 MGA/46.7 DME MGA, ARSAS, KUBAS (IAF).

MÁLAGA TWO SIERRA ARRIVAL (MGA2S)

DVOR/DME MGA, R-280 MGA/46.7 DME MGA, ARSAS, KUBAS (IAF).

LLEGADA MÁLAGA DOS TANGO (MGA2T)

→ DVOR/DME MGA, R-262 MGA/71.5 DME MGA, KUBAS (IAF).

MÁLAGA TWO TANGO ARRIVAL (MGA2T)

DVOR/DME MGA, R-262 MGA/71.5 DME MGA, KUBAS (IAF).

LLEGADA MARTIN DOS TANGO (MAR2T)

→ DVOR/DME MAR, R-251 MAR/23.4 DME MAR, ARSAS, KUBAS (IAF).

MARTIN TWO TANGO ARRIVAL (MAR2T)

DVOR/DME MAR, R-251 MAR/23.4 DME MAR, ARSAS, KUBAS (IAF).

LLEGADA ONUBA DOS TANGO (ONUBA2T)

ONUBA, VOR/DME MRN, ARSAS, KUBAS (IAF).

ONUBA TWO TANGO ARRIVAL (ONUBA2T)

ONUBA, VOR/DME MRN, ARSAS, KUBAS (IAF).

LLEGADA SEVILLA DOS TANGO (SVL2T)

DVOR/DME SVL, VOR/DME MRN, ARSAS, KUBAS (IAF).

SEVILLA TWO TANGO ARRIVAL (SVL2T)

DVOR/DME SVL, VOR/DME MRN, ARSAS, KUBAS (IAF).

LLEGADA VEJER DOS TANGO (VJF2T)

DVOR/DME VJF, KUBAS (IAF).

VEJER TWO TANGO ARRIVAL (VJF2T)

DVOR/DME VJF, KUBAS (IAF).