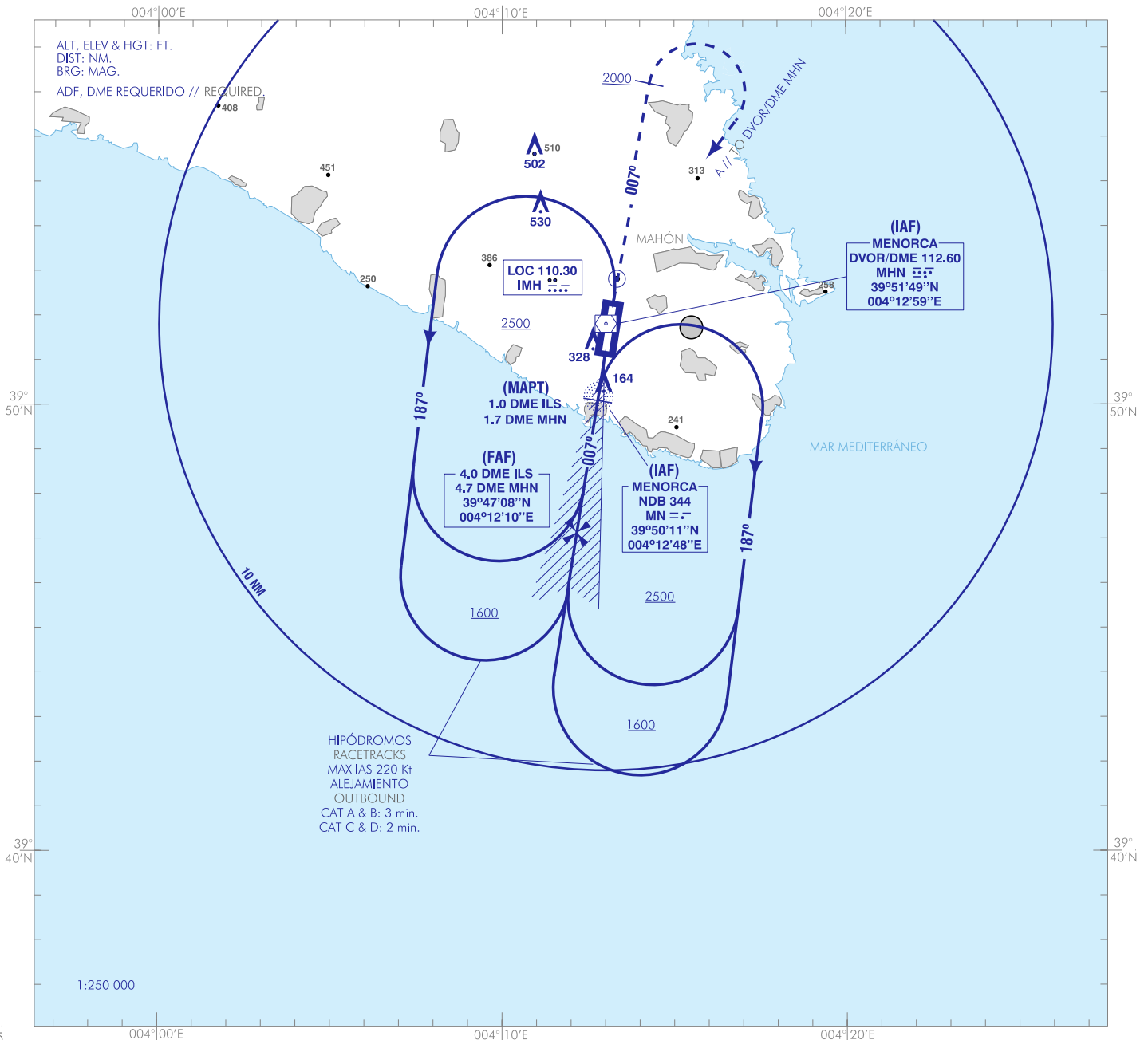


CARTA DE APROXIMACIÓN  
POR INSTRUMENTOS-OACI

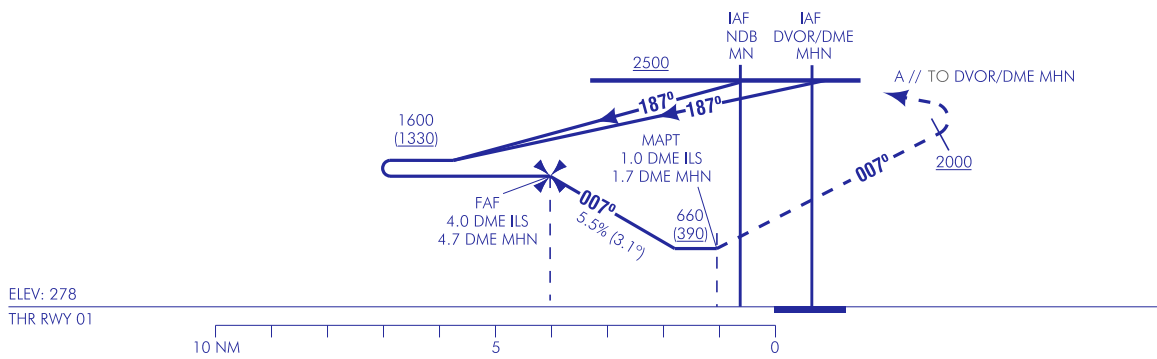
ELEV AD  
303  
VAR 2°E (2020)

APP 119.650  
TWR 118.200  
GMC 121.750  
ATIS 129.150

MENORCA  
LOC Z  
RWY 01



**FRUSTRADA:** SUBIR EN RUMBO DE PISTA HASTA ALCANZAR 2000. VIRAR A LA DERECHA DIRECTO AL DVOR/DME MHN SUBIENDO A 2500 PARA INTEGRARSE A LA ESPERA.  
**MISSED APCH:** CLIMB ON RUNWAY HEADING TO REACH 2000. TURN RIGHT DIRECT TO DVOR/DME MHN CLIMBING TO 2500 TO JOIN THE HOLDING.



ELEV: 278  
THR RWY 01

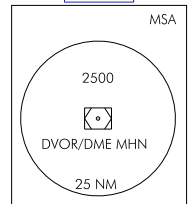
HGT REF ELEV THR RWY 01

| OCA/H  | A            | B            | C             | D |
|--|--------------|--------------|---------------|---|
| 2.5 %  |              | 660<br>(390) |               |   |
| <b>STA</b>   |              |              |               |   |
| <b>En círculo (H) sobre 303</b><br>Circling (H) over 303 | 740<br>(440) | 900<br>(600) | 1010<br>(710) |   |

| GS                      | kt     | 80   | 100  | 120  | 140  | 160  | 180  |
|-------------------------|--------|------|------|------|------|------|------|
| <b>FAF-THR:</b>         | min:s  |      |      |      |      |      |      |
| <b>FAF-MAPT: 3.0 NM</b> | min:s  | 2:15 | 1:48 | 1:30 | 1:17 | 1:07 | 1:00 |
| <b>ROD: 5.5 %</b>       | ft/min | 442  | 552  | 663  | 773  | 883  | 994  |

| ALT/HGT DME (ILS) FNA |    |    |    |   |   |   |   |   |   |                |
|-----------------------|----|----|----|---|---|---|---|---|---|----------------|
| 13                    | 12 | 11 | 10 | 9 | 8 | 7 | 6 | 5 | 4 | 3              |
|                       |    |    |    |   |   |   |   |   |   | 1300<br>(1050) |
|                       |    |    |    |   |   |   |   |   |   | 1000<br>(720)  |

TA 6000



CAMBIOS: DECLINACIÓN MAGNÉTICA, RUMBOS, COORDENADAS DEL DVOR EN LUGAR DEL DME, IDIOMA. CHANGES: MAGNETIC VARIATION, HEADINGS, DVOR COORDINATES INSTEAD OF DME, LANGUAGE.

MENORCA AD

REQUISITOS DE LA BASE DE DATOS AERONÁUTICA  
AERONAUTICAL DATABASE REQUIREMENTS

PROCEDIMIENTOS DE APROXIMACIÓN POR INSTRUMENTOS // INSTRUMENT APPROACH PROCEDURES

LOC Z RWY 01

| PUNTO<br>POINT   | LATITUD<br>LATITUDE | LONGITUD<br>LONGITUDE | AZIMUT VERDADERO<br>TRUE BEARING | DISTANCIA DME<br>DME DISTANCE<br>(NM) |
|--|---------------------|-----------------------|----------------------------------|---------------------------------------|
| DVOR/DME MHN (IAF)   | 39°51'49.1"N        | 004°12'58.1"E         | -                                | -                                     |
| NDB MN (IAF)   | 39°50'11.3"N        | 004°12'47.8"E         | -                                | -                                     |
| FAF  | 39°47'07.9"N        | 004°12'10.2"E         | 189.00° (LOC IMH)                | 3.99 DME ILS                          |
| MAPT   | 39°50'05.2"N        | 004°12'46.6"E         | 189.00° (LOC IMH)                | 1.00 DME ILS                          |
| Aproximación final de no precisión - Pendiente (Ángulo de descenso) //<br>Non-precision final approach - Slope (Descent angle) |                     |                       |                                  | 5.45% (3.12°)                         |

