

CARTA DE LLEGADA NORMALIZADA
VUELO POR INSTRUMENTOS (STAR)-OACI

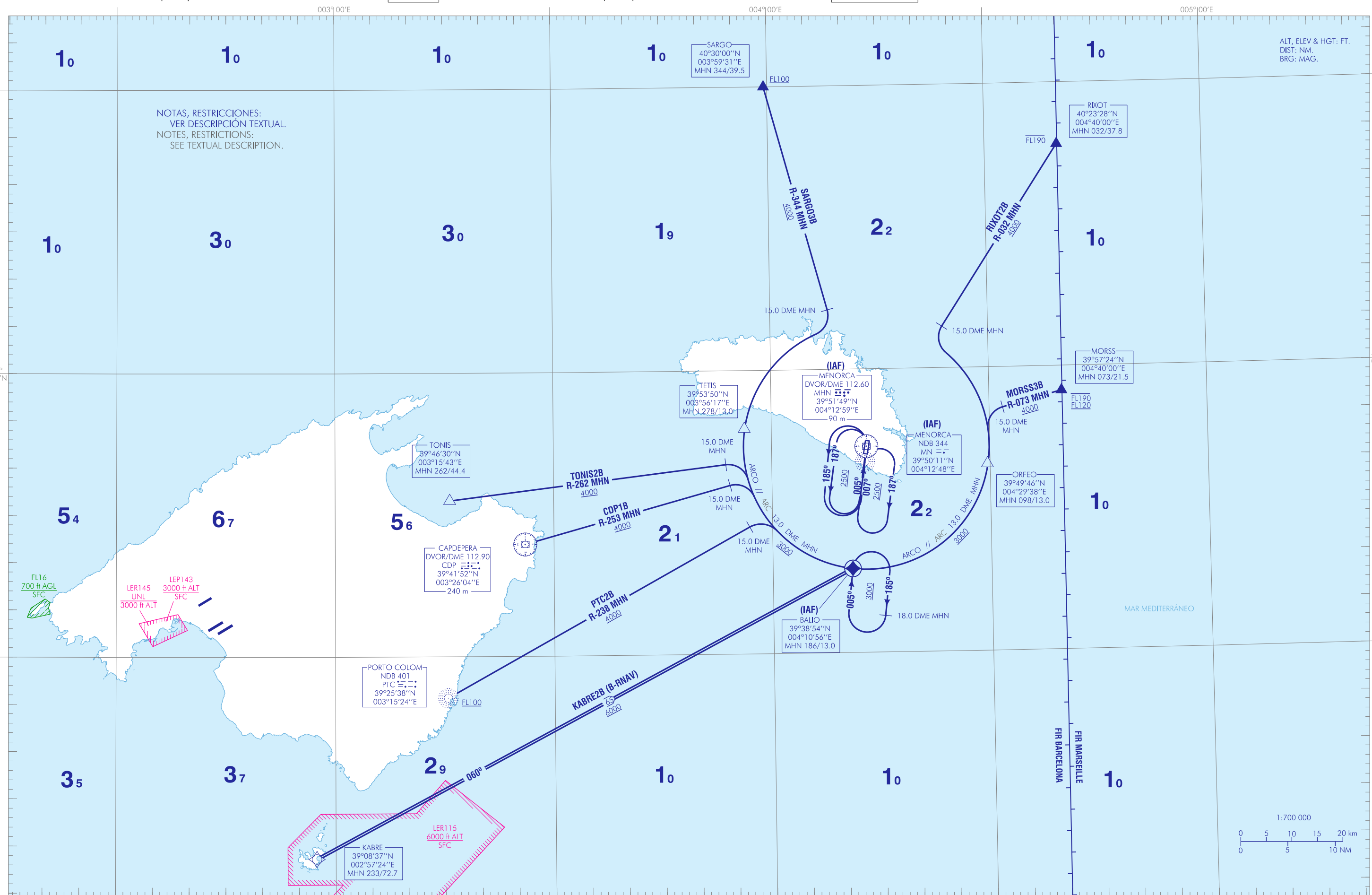
TA 6000

VAR 1°23'E (2020)

APP 119.650
TWR 118.200

CDP1B KABRE2B MORSS3B PTC2B
RIXOT2B SARGO3B TONIS2B

CAMBIOs: DECLINACION MAGNETICA, RUMBOS Y RADIALES; LIMITES VERTICALES DE LER115, COORDENADAS DEL DVOR EN LUGAR DEL DME, ZONA DE FAUNA SENSIBLE.
CHANGES: MAGNETIC VARIATION, HEADINGS AND RADIALS; VERTICAL LIMITS OF LER115, DVOR COORDINATES INSTEAD OF DME, SENSITIVE FAUNA AREA.



ALT, ELEV & HGT: FT.
DIST: NM.
BRG: MAG.

NOTAS, RESTRICCIONES:
VER DESCRIPCIÓN TEXTUAL.
NOTES, RESTRICTIONS:
SEE TEXTUAL DESCRIPTION.

INTENCIONADAMENTE EN BLANCO
INTENTIONALLY BLANK

MENORCA AD

➔ LLEGADAS NORMALIZADAS POR INSTRUMENTOS (STAR)

PISTA 01

NOTA APLICABLE A TODAS LAS STAR:

– IAS MAX 250 kt a FL100 o inferior.

LLEGADA CAPDEPERA UNO BRAVO (CDP1B)

Uso táctico ATC para tráfico procedente de LEPA/LESJ AD.
DVOR/DME CDP, R-253 MHN/15.0 DME MHN, ARCO 13.0 DME MHN, BALIO (IAF).

LLEGADA KABRE DOS BRAVO (KABRE2B) B-RNAV. Se requiere aprobación B-RNAV.
KABRE, BALIO (IAF).

LLEGADA MORSS TRES BRAVO (MORSS3B)

MORSS, R-073 MHN/15.0 DME MHN, ARCO 13.0 DME MHN, ORFEO, ARCO 13.0 DME MHN, BALIO (IAF).

LLEGADA PORTO COLOM DOS BRAVO (PTC2B)

Uso táctico ATC para tráfico procedente de LEPA/LESJ AD.
NDB PTC, R-238 MHN/15.0 DME MHN, ARCO 13.0 DME MHN, BALIO (IAF).

LLEGADA RIXOT DOS BRAVO (RIXOT2B)

RIXOT, R-032 MHN/15.0 DME MHN, ARCO 13.0 DME MHN, ORFEO, ARCO 13.0 DME MHN, BALIO (IAF).

LLEGADA SARGO TRES BRAVO (SARGO3B)

SARGO, R-344 MHN/15.0 DME MHN, ARCO 13.0 DME MHN, TETIS, ARCO 13.0 DME MHN, BALIO (IAF).

LLEGADA TONIS DOS BRAVO (TONIS2B)

Uso táctico ATC para tráfico procedente de LEPA/LESJ AD.
Sólo utilizable bajo control radar o por aeronaves con equipo RNAV.
TONIS, R-262 MHN/15.0 DME MHN, ARCO 13.0 DME MHN, BALIO (IAF).

STANDARD INSTRUMENT ARRIVALS (STAR)

RUNWAY 01

NOTE APPLICABLE TO ALL STAR:

– MAX IAS 250 kt at FL100 or below.

CAPDEPERA ONE BRAVO ARRIVAL (CDP1B)

ATC tactical use for traffic arriving from LEPA/LESJ AD.
DVOR/DME CDP, R-253 MHN/15.0 DME MHN, ARC 13.0 DME MHN, BALIO (IAF).

KABRE TWO BRAVO ARRIVAL (KABRE2B) B-RNAV. B-RNAV approval required.
KABRE, BALIO (IAF).

MORSS THREE BRAVO ARRIVAL (MORSS3B)

MORSS, R-073 MHN/15.0 DME MHN, ARC 13.0 DME MHN, ORFEO, ARC 13.0 DME MHN, BALIO (IAF).

PORTO COLOM TWO BRAVO ARRIVAL (PTC2B)

ATC tactical use for traffic arriving from LEPA/LESJ AD.
NDB PTC, R-238 MHN/15.0 DME MHN, ARC 13.0 DME MHN, BALIO (IAF).

RIXOT TWO BRAVO ARRIVAL (RIXOT2B)

RIXOT, R-032 MHN/15.0 DME MHN, ARCO 13.0 DME MHN, ORFEO, ARCO 13.0 DME MHN, BALIO (IAF).

SARGO THREE BRAVO ARRIVAL (SARGO3B)

SARGO, R-344 MHN/15.0 DME MHN, ARCO 13.0 DME MHN, TETIS, ARCO 13.0 DME MHN, BALIO (IAF).

TONIS TWO BRAVO ARRIVAL (TONIS2B)

ATC tactical use for traffic arriving from LEPA/LESJ AD.
Only usable under radar control or by RNAV equipped aircraft.
TONIS, R-262 MHN/15.0 DME MHN, ARC 13.0 DME MHN, BALIO (IAF).

INTENCIONADAMENTE EN BLANCO
INTENTIONALLY BLANK