

CARTA DE LLEGADA NORMALIZADA
VUELO POR INSTRUMENTOS (STAR)-OACI

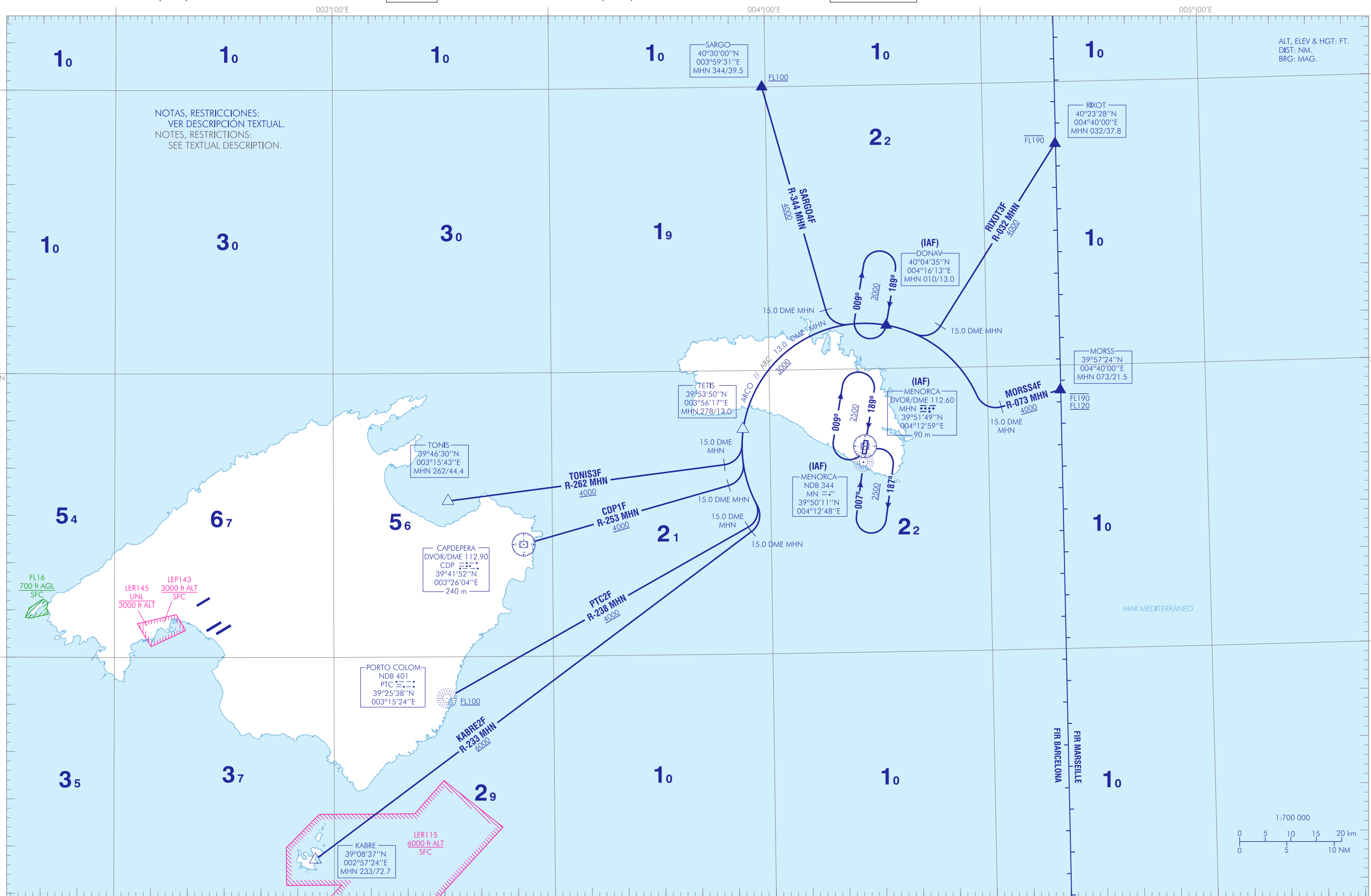
TA 6000

VAR 1°23'E (2020)

APP 119.650
TWR 118.200

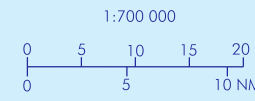
CDP1F KABRE2F MORSS4F PTC2F
RIXOT3F SARGO4F TONIS3F

CAMBIO: DECLINACIÓN MAGNÉTICA, RUMBOS Y RADIALES; LÍMITES VERTICALES DE LER15, COORDENADAS DEL DVOR EN LUGAR DEL DME, ZONA DE FAUNA SENSIBLE.
CHANGES: MAGNETIC VARIATION, HEADINGS AND RADIALS, VERTICAL LIMITS OF LER15, DVOR COORDINATES INSTEAD OF DME, SENSITIVE FAUNA AREA.



NOTAS, RESTRICCIONES:
VER DESCRIPCIÓN TEXTUAL.
NOTES, RESTRICTIONS:
SEE TEXTUAL DESCRIPTION.

ALT, ELEV & HGT: FT.
DIST: NM.
BRG: MAG.



INTENCIONADAMENTE EN BLANCO
INTENTIONALLY BLANK

MENORCA AD

➔ LLEGADAS NORMALIZADAS POR INSTRUMENTOS (STAR)

PISTA 19

NOTA APLICABLE A TODAS LAS STAR:

– IAS MAX 250 kt a FL100 o inferior.

LLEGADA CAPDEPERA UNO FOXTROT (CDP1F)

Uso táctico ATC para tráfico procedente de LEPA/LESJ AD.
DVOR/DME CDP, R-253 MHN/15.0 DME MHN, ARCO 13.0 DME MHN, TETIS, ARCO 13.0 DME MHN, DONAV (IAF).

LLEGADA KABRE DOS FOXTROT (KABRE2F)

KABRE, R-233 MHN/15.0 DME MHN, ARCO 13.0 DME MHN, TETIS, ARCO 13.0 DME MHN, DONAV (IAF).

LLEGADA MORSS CUATRO FOXTROT (MORSS4F)

MORSS, R-073 MHN/15.0 DME MHN, ARCO 13.0 DME MHN, DONAV (IAF).

LLEGADA PORTO COLOM DOS FOXTROT (PTC2F)

Uso táctico ATC para tráfico procedente de LEPA/LESJ AD.
NDB PTC, R-238 MHN/15.0 DME MHN, ARCO 13.0 DME MHN, TETIS, ARCO 13.0 DME MHN, DONAV (IAF).

LLEGADA RIXOT TRES FOXTROT (RIXOT3F)

RIXOT, R-032 MHN/15.0 DME MHN, ARCO 13.0 DME MHN, DONAV (IAF).

LLEGADA SARGO CUATRO FOXTROT (SARGO4F)

SARGO, R-344 MHN/15.0 DME MHN, ARCO 13.0 DME MHN, DONAV (IAF).

LLEGADA TONIS TRES FOXTROT (TONIS3F)

Uso táctico ATC para tráfico procedente de LEPA/LESJ AD.
TONIS, R-262 MHN/15.0 DME MHN, ARCO 13.0 DME MHN, TETIS, ARCO 13.0 DME MHN, DONAV (IAF).

STANDARD INSTRUMENT ARRIVALS (STAR)

RUNWAY 19

NOTE APPLICABLE TO ALL STAR:

– MAX IAS 250 kt at FL100 or below.

CAPDEPERA ONE FOXTROT ARRIVAL (CDP1F)

ATC tactical use for traffic arriving from LEPA/LESJ AD.
DVOR/DME CDP, R-253 MHN/15.0 DME MHN, ARCO 13.0 DME MHN, TETIS, ARCO 13.0 DME MHN, DONAV (IAF).

KABRE TWO FOXTROT ARRIVAL (KABRE2F)

KABRE, R-233 MHN/15.0 DME MHN, ARCO 13.0 DME MHN, TETIS, ARCO 13.0 DME MHN, DONAV (IAF).

MORSS FOUR FOXTROT ARRIVAL (MORSS4F)

MORSS, R-073 MHN/15.0 DME MHN, ARCO 13.0 DME MHN, DONAV (IAF).

PORTO COLOM TWO FOXTROT ARRIVAL (PTC2F)

ATC tactical use for traffic arriving from LEPA/LESJ AD.
NDB PTC, R-238 MHN/15.0 DME MHN, ARCO 13.0 DME MHN, TETIS, ARCO 13.0 DME MHN, DONAV (IAF).

RIXOT THREE FOXTROT ARRIVAL (RIXOT3F)

RIXOT, R-032 MHN/15.0 DME MHN, ARCO 13.0 DME MHN, DONAV (IAF).

SARGO FOUR FOXTROT ARRIVAL (SARGO4F)

SARGO, R-344 MHN/15.0 DME MHN, ARCO 13.0 DME MHN, DONAV (IAF).

TONIS THREE FOXTROT ARRIVAL (TONIS3F)

ATC tactical use for traffic arriving from LEPA/LESJ AD.
TONIS, R-262 MHN/15.0 DME MHN, ARCO 13.0 DME MHN, TETIS, ARCO 13.0 DME MHN, DONAV (IAF).

INTENCIONADAMENTE EN BLANCO
INTENTIONALLY BLANK