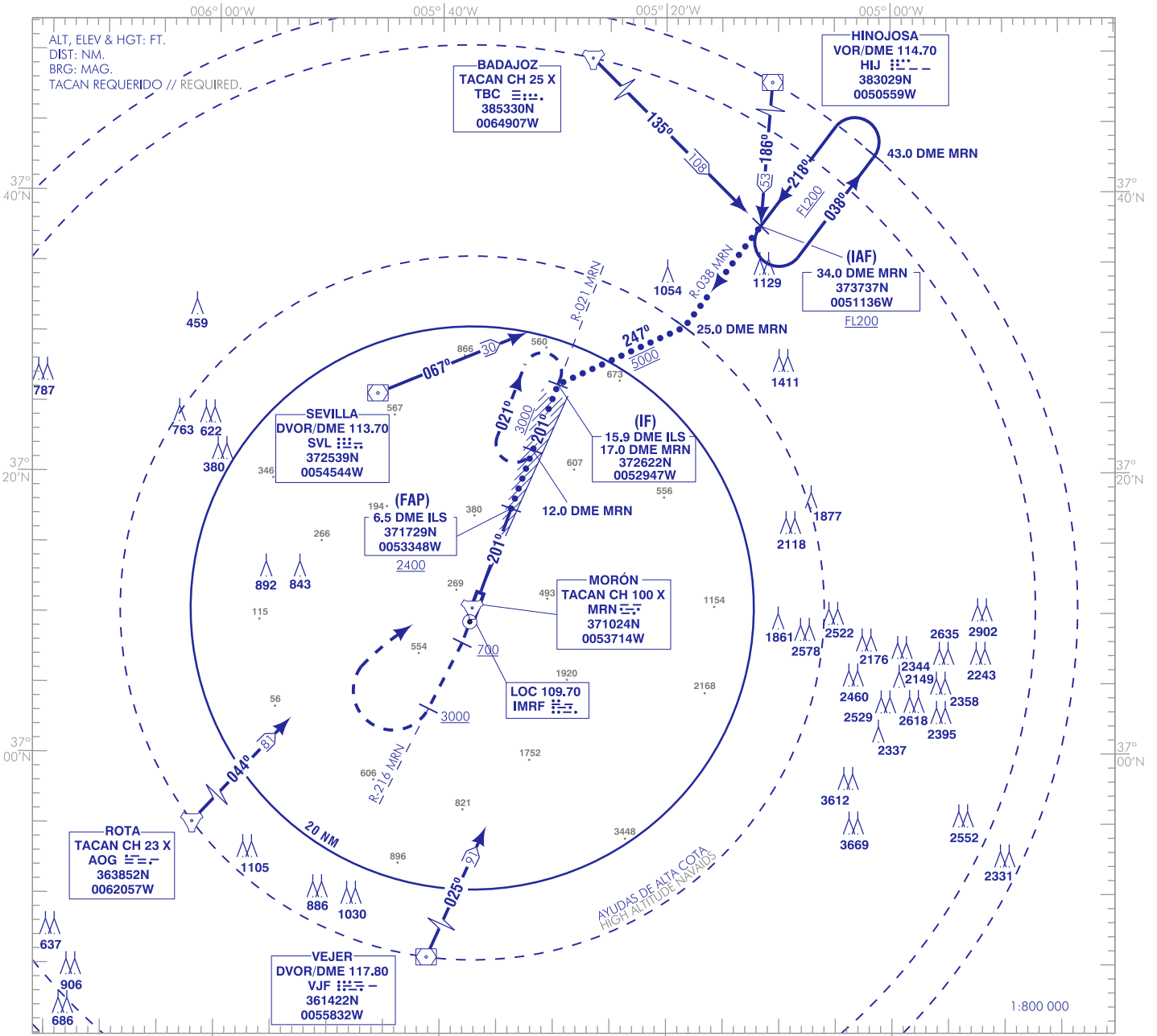


CARTA DE APROXIMACIÓN
POR INSTRUMENTOS-MIPS

ELEV AD
285
VAR 1°W (2020)

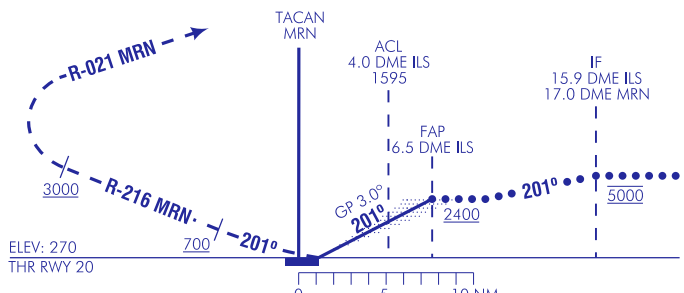
APP 128.500 MHz
TWR 139.300 MHz

SEVILLA/Morón
HI-ILS
RWY 20



FRUSTRADA: SUBIR HASTA ALCANZAR 700 Y GIRAR A LA DERECHA PARA INTERCEPTAR R-216 MRN A 3000 O SUPERIOR. GIRAR A LA DERECHA PARA INTERCEPTAR Y SEGUIR R-021 MRN HASTA 12.0 DME MRN Y ESPERA.

MISSED APCH: CLIMB TO REACH 700 AND TURN RIGHT TO INTERCEPT R-216 MRN TO 3000 OR ABOVE. TURN RIGHT TO INTERCEPT AND FOLLOW R-021 MRN UP TO 12.0 DME MRN AND HOLD.

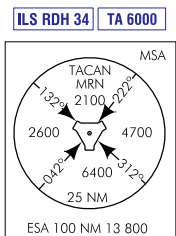


CAMBIOS: NUEVA APROXIMACIÓN, OBSTÁCULOS.
CHANGES: NEW APPROACH, OBSTACLES.

HGT REF ELEV THR RWY 20

CAT	A	B	C	D
S-ILS			470/ 0.8* 200 (200-0.8)	
CIRCUITO CIRCLING	800/ 1.5 530 (600-1.5)	800/ 1.6 530 (600-1.6)	910/ 2.4 640 (700-2.4)	1070/ 3.6 800 (800-3.6)
* CUANDO ALS U/S INCREMENTAR VIS EN 0.4 km * WHEN ALS U/S INCREASE VIS IN 0.4 km				

GS	kt	80	100	120	140	160	180
FAP-THR:	min:s						
FAF-MAPT:	min:s						
ROD: 5.2%	ft/min	425	530	637	743	849	955
ALT DME (ILS) FNA							
13	12	11	10	9	8	7	6
							2250
							1930
							1600
							1270
							950
							650



INTENCIONADAMENTE EN BLANCO
INTENTIONALLY BLANK