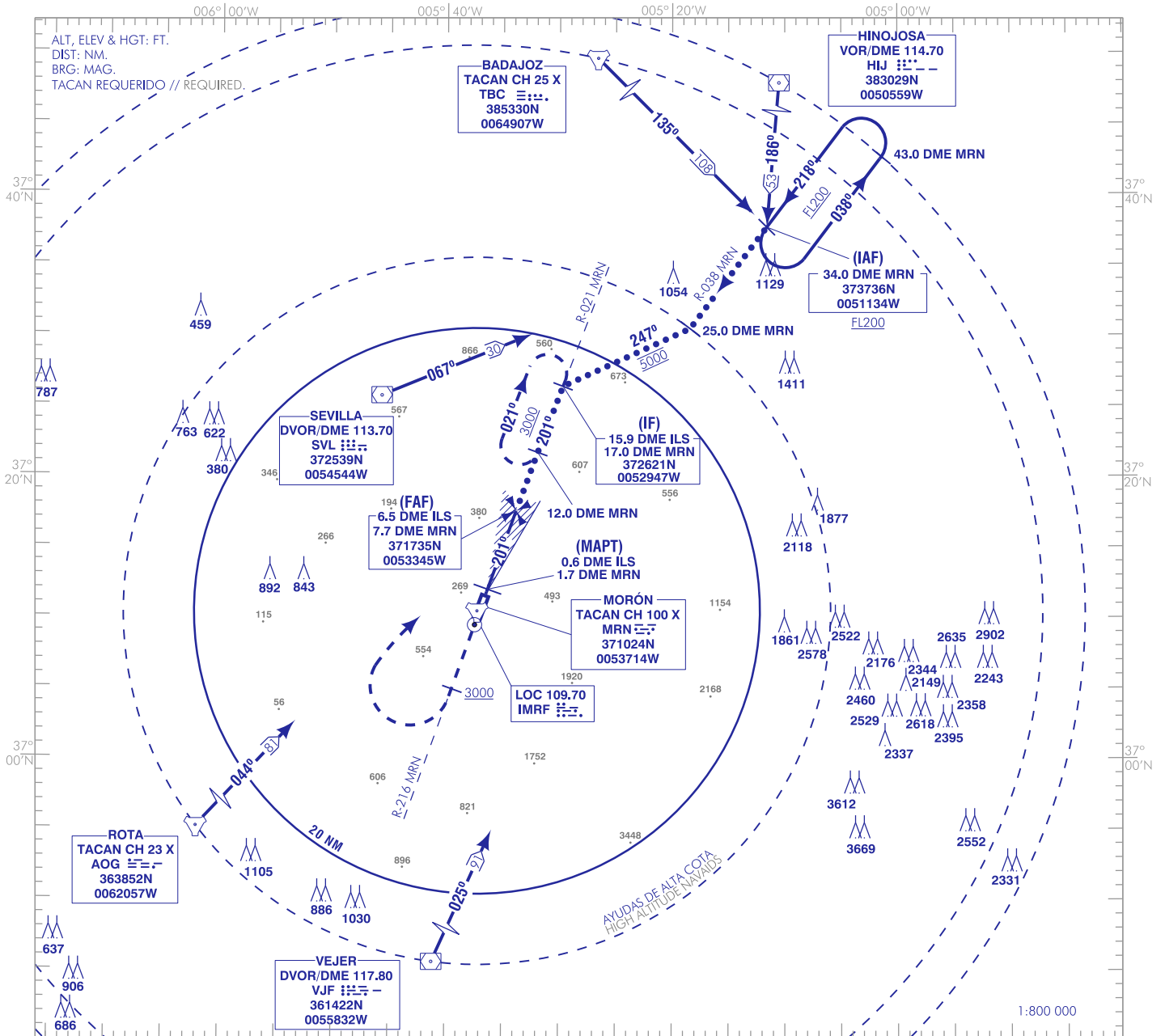


CARTA DE APROXIMACIÓN
POR INSTRUMENTOS-MIPS

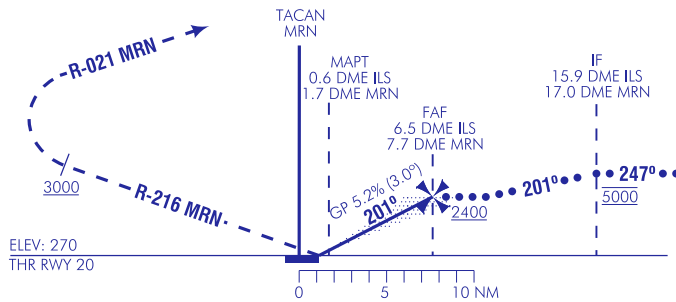
ELEV AD
285
VAR 1°W (2020)

APP 128.500 MHz
TWR 139.300 MHz

SEVILLA/Morón
HI-LOC
RWY 20



FRUSTRADA: GIRAR A LA DERECHA PARA INTERCEPTAR R-216 MRN A 3000 O SUPERIOR. GIRAR A LA DERECHA PARA INTERCEPTAR Y SEGUIR R-021 MRN HASTA 12.0 DME MRN Y ESPERA.
MISSED APCH: TURN RIGHT TO INTERCEPT R-216 MRN TO 3000 OR ABOVE. TURN RIGHT TO INTERCEPT AND FOLLOW R-021 MRN UP TO 12.0 DME MRN AND HOLD.



HGT REF ELEV THR RWY 20

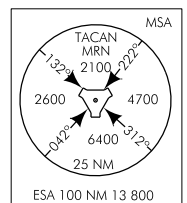
CAT	A	B	C	D
S-LOC	660/1.4* 390 (400-1.4)		660/1.4** 390 (400-1.4)	
CIRCUITO CIRCLING	800/1.5 530 (600-1.5)	800/1.6 530 (600-1.6)	910/2.4 640 (700-2.4)	1070/3.6 800 (800-3.6)

* CUANDO ALS U/S INCREMENTAR VIS EN 0.1 km ** CUANDO ALS U/S INCREMENTAR VIS EN 0.4 km
* WHEN ALS U/S INCREASE VIS BY 0.1 km ** WHEN ALS U/S INCREASE VIS BY 0.4 km

GS	kt	80	100	120	140	160	180
FAF-THR:	min:s						
FAF-MAPT: 6 NM	min:s	4:30	3:36	3:00	2:34	2:15	2:00
ROD: 5.2%	ft/min	425	530	637	743	849	955

ALT DME (ILS) FNA							
13	12	11	10	9	8	7	6
							2230
							1920
							1600
							1280
							960

TA 6000



CARTA NUEVA.
NEW CHART.

INTENCIONADAMENTE EN BLANCO
INTENTIONALLY BLANK