

Ver correcciones manuscritas GEN 0.5  
See hand amendments on section GEN 0.5

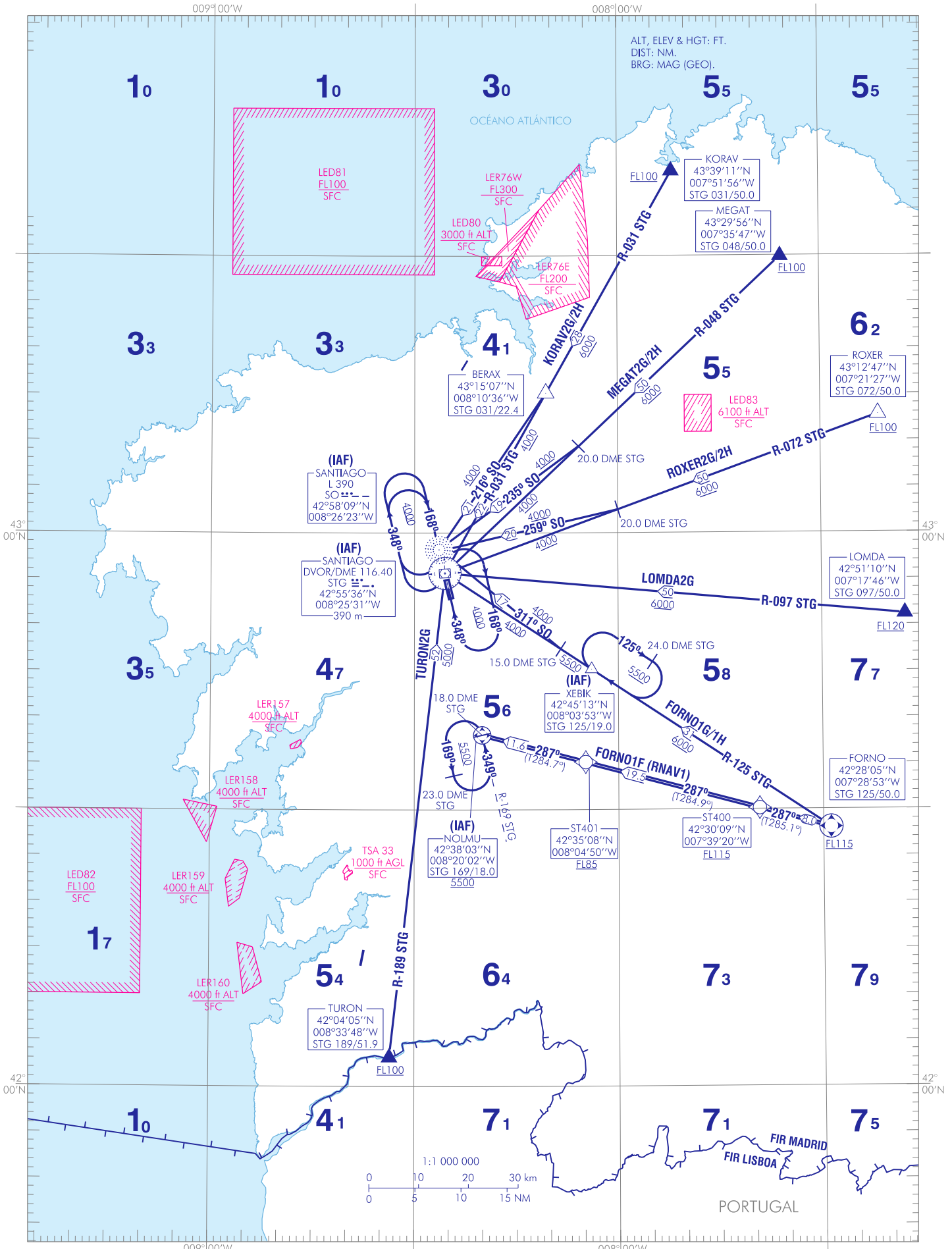
SANTIAGO/Rosalía de Castro

RWY 17/35 RWY 35  
FORNO1G FORNO1H KORAV2G KORAV2H FORNO1F  
LOMDA2G MEGAT2G MEGAT2H ROXER2G  
ROXER2H TURON2G

CARTA DE LLEGADA NORMALIZADA  
VUELO POR INSTRUMENTOS (STAR)-OACI

TA 6000  
VAR 2°W  
(2020)

APP 120.200  
TWR 118.750  
ATIS 127.750



SANTIAGO/Rosalía de Castro AD

LLEGADAS NORMALIZADAS POR INSTRUMENTOS (STAR)

STANDARD INSTRUMENT ARRIVALS (STAR)

PISTA 17/35

RUNWAY 17/35

LLEGADA FORNO UNO GOLF (FORNO1G)  
 FORNO, XEBIK (IAF), DVOR/DME STG (IAF).

FORNO ONE GOLF ARRIVAL (FORNO1G)  
 FORNO, XEBIK (IAF), DVOR/DME STG (IAF).

LLEGADA FORNO UNO HOTEL (FORNO1H)  
 FORNO, R-125 STG / 15.0 DME STG, L SO (IAF).

FORNO ONE HOTEL ARRIVAL (FORNO1H)  
 FORNO, R-125 STG / 15.0 DME STG, L SO (IAF).

LLEGADA KORAV DOS GOLF (KORAV2G). Sujeta a la actividad de la LER76E.  
 KORAV, BERAX, DVOR/DME STG (IAF).

KORAV TWO GOLF ARRIVAL (KORAV2G). Subject to LER76E activity.  
 KORAV, BERAX, DVOR/DME STG (IAF).

LLEGADA KORAV DOS HOTEL (KORAV2H). Sujeta a la actividad de la LER76E.  
 KORAV, BERAX, L SO (IAF).

KORAV TWO HOTEL ARRIVAL (KORAV2H). Subject to LER76E activity.  
 KORAV, BERAX, L SO (IAF).

LLEGADA LOMDA DOS GOLF (LOMDA2G)  
 LOMDA, DVOR/DME STG (IAF).

LOMDA TWO GOLF ARRIVAL (LOMDA2G)  
 LOMDA, DVOR/DME STG (IAF).

LLEGADA MEGAT DOS GOLF (MEGAT2G). Sujeta a la actividad de la LED83.  
 MEGAT, R-048 STG / 20.0 DME STG, DVOR/DME STG (IAF).

MEGAT TWO GOLF ARRIVAL (MEGAT2G). Subject to LED83 activity.  
 MEGAT, R-048 STG / 20.0 DME STG, DVOR/DME STG (IAF).

LLEGADA MEGAT DOS HOTEL (MEGAT2H). Sujeta a la actividad de la LED83.  
 MEGAT, R-048 STG / 20.0 DME STG, L SO (IAF).

MEGAT TWO HOTEL ARRIVAL (MEGAT2H). Subject to LED83 activity.  
 MEGAT, R-048 STG / 20.0 DME STG, L SO (IAF).

LLEGADA ROXER DOS GOLF (ROXER2G)  
 ROXER, R-072 STG / 20.0 DME STG, DVOR/DME STG (IAF).

ROXER TWO GOLF ARRIVAL (ROXER2G)  
 ROXER, R-072 STG / 20.0 DME STG, DVOR/DME STG (IAF).

LLEGADA ROXER DOS HOTEL (ROXER2H)  
 ROXER, R-072 STG / 20.0 DME STG, L SO (IAF).

ROXER TWO HOTEL ARRIVAL (ROXER2H)  
 ROXER, R-072 STG / 20.0 DME STG, L SO (IAF).

LLEGADA TURON DOS GOLF (TURON2G)  
 TURON, DVOR/DME STG (IAF).

TURON TWO GOLF ARRIVAL (TURON2G)  
 TURON, DVOR/DME STG (IAF).

LLEGADAS NORMALIZADAS POR INSTRUMENTOS (STAR) RNAV1

STANDARD INSTRUMENT ARRIVALS (STAR) RNAV1

PISTA 35

RUNWAY 35

NOTA:  
 -RNAV1 requerido

NOTE:  
 -RNAV1 required

DME CRÍTICO // CRITICAL DME

INSTALACIÓN (ID) FACILITY (ID)	FRECUENCIA / CANAL FREQUENCY / CHANNEL	COORD
VIGO (VGO)	CH83X	421916.3054N 0083605.2081W

DESCRIPCIÓN FORMAL FORMAL DESCRIPTION	DESCRIPCIÓN ABREVIADA ABBREVIATED DESCRIPTION	Código Path Terminator Previsto Expected Path Terminator Coding	Fly-Over Requerido Fly-Over Required
<b>FORNO1F</b>			
FORNO a o por encima de FL115. A ST400 a o por encima de FL115. A ST401 a o por encima de FL85. A NOLMU a o por encima de 5500 ft. FORNO at or above FL115. To ST400 at or above FL115. To ST401 at or above FL85. To NOLMU at or above 5500 ft.	FORNO [F115+] – ST400 [F115+] – ST401 [F085+] – NOLMU [A5500+]	IF TF TF TF	– – – –