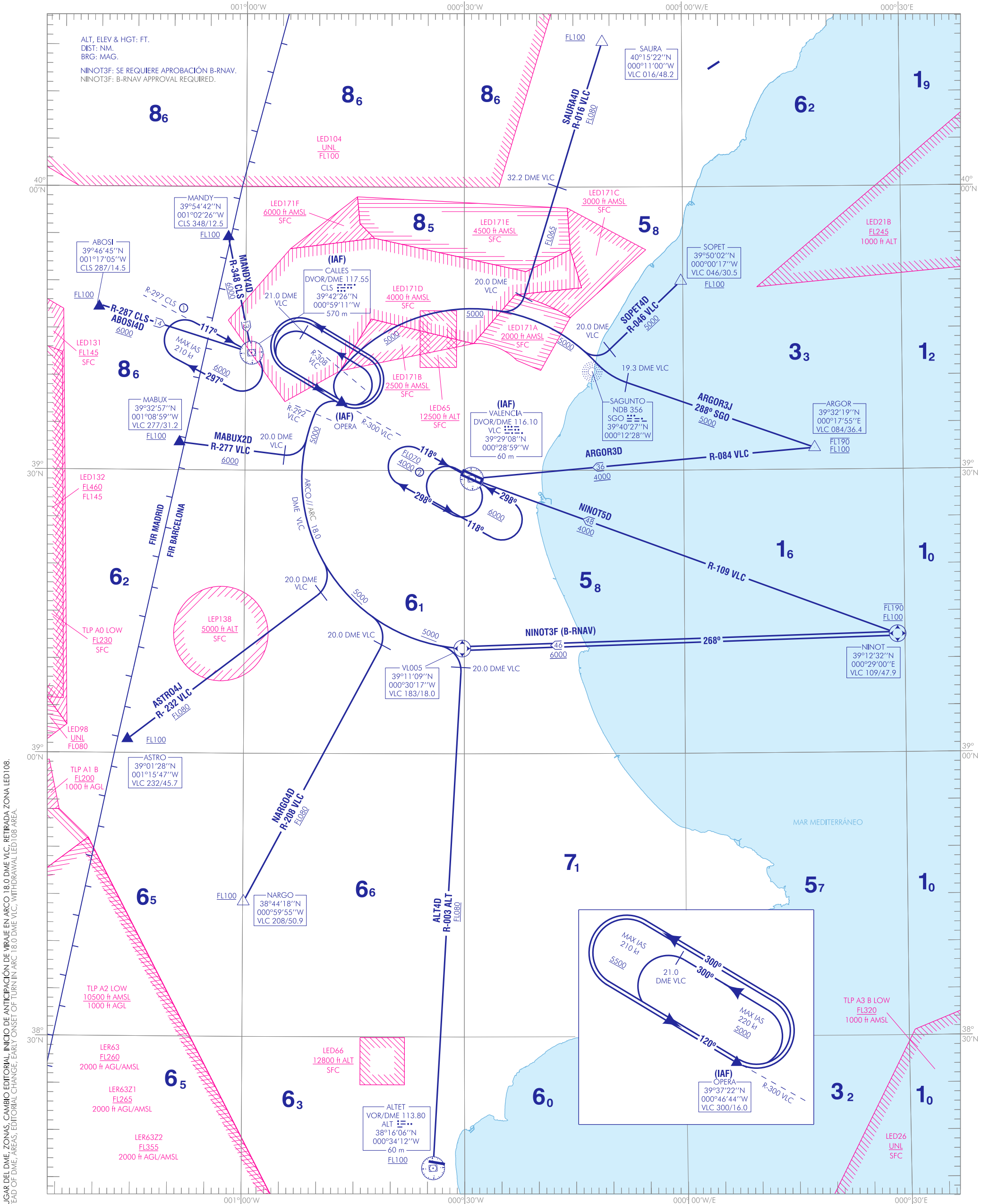


CARTA DE SALIDA NORMALIZADA
VUELO POR INSTRUMENTOS (STAR)-OACI

TA 6000
VAR 1° E (2020)

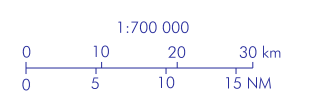
APP 120.100
TWR 118.550

ABOSI4D ALT4D ARGOR3D ARGOR3J
ASTRO4J MABUX2D MANDY4D NARGO4D
NINOT5D NINOT3F SAURA4D SOPET4D



CAMBIOS: AMM, COORD DVOR EN LUGAR DEL DME, ZONAS, CAMBIO EDITORIAL, INICIO DE ANTICIPACIÓN DE VIRAJE EN ARCO 18.0 DME VLC, RETIRADA ZONA LED108. CHANGES: AMM, COORD DVOR INSTEAD OF DME, AREAS, EDITORIAL CHANGE, EARLY ONSET OF TURN IN ARC 18.0 DME VLC, WITHDRAWAL LED108 AREA.

NOTAS:
 ① CALLES (IAF): HLDG CONV Y RNAV1 COINCIDENTES.
 ② MNM ALT UTILIZABLE PREVIA AUTORIZACIÓN ATC.
 - NOTAS, RESTRICCIONES: VER DESCRIPCIÓN TEXTUAL.
 NOTES:
 ① CONV AND RNAV1 HLDG OVERLAY.
 ② MNM ALT USABLE PRIOR ATC CLEARANCE.
 - NOTES, RESTRICTIONS: SEE TEXTUAL DESCRIPTION.



INTENCIONADAMENTE EN BLANCO
INTENTIONALLY BLANK

VALENCIA AD

COORDENADAS WAYPOINTS // WAYPOINTS COORDINATES	
WPT	COORD
NINOT	39°12'31.8"N 000°29'00.0"E
VL005	39°11'09.3"N 000°30'17.1"W

LLEGADAS NORMALIZADAS POR INSTRUMENTOS (STAR)

NOTA APLICABLE A TODAS LAS STAR:

- AJUSTE DE VELOCIDAD
 - a) IAS MAX 250 kt a FL100 o inferior.
 - b) IAS 220 kt al abandonar el IAF CLS.

PISTA 12

LLEGADA ABOSI CUATRO DELTA (ABOSI4D)
ABOSI, DVOR/DME CLS (IAF).

NOTA: CALLES (IAF) ESPERAS CONVENCIONAL Y RNAV1 COINCIDENTES.

LLEGADA ALTET CUATRO DELTA (ALT4D). Sujeta a la actividad de la LED66.
VOR/DME ALT, R-003 ALT / 20.0 DME VLC, ARCO 18.0 DME VLC, OPERA (IAF).

LLEGADA ARGOR TRES DELTA (ARGOR3D)
ARGOR, DVOR/DME VLC (IAF).

LLEGADA ARGOR TRES JULIETT (ARGOR3J). Sujeta a la actividad de la LED65.

➔ ARGOR, 288° SGO / 19.3 DME VLC, ARCO 18.0 DME VLC, OPERA (IAF).

LLEGADA ASTRO CUATRO JULIETT (ASTRO4J)
ASTRO, R-232 VLC / 20.0 DME VLC, ARCO 18.0 DME VLC, OPERA (IAF).

LLEGADA MABUX DOS DELTA (MABUX2D)
MABUX, R-277 VLC / 20.0 DME VLC, ARCO 18.0 DME VLC, OPERA (IAF).

LLEGADA MANDY CUATRO DELTA (MANDY4D)
MANDY, DVOR/DME CLS (IAF).

NOTA: CALLES (IAF) ESPERAS CONVENCIONAL Y RNAV1 COINCIDENTES.

LLEGADA NARGO CUATRO DELTA (NARGO4D)
NARGO, R-208 VLC / 20.0 DME VLC, ARCO 18.0 DME VLC, OPERA (IAF).

LLEGADA NINOT CINCO DELTA (NINOT5D)
NINOT, DVOR/DME VLC (IAF).

LLEGADA NINOT TRES FOXTROT (NINOT3F) B-RNAV. Se requiere aprobación B-RNAV.
NINOT, VL005, ARCO 18.0 DME VLC, OPERA (IAF).

LLEGADA SAURA CUATRO DELTA (SAURA4D). Sujeta a la actividad de la LED65.
SAURA, R-016 VLC / 20.0 DME VLC, ARCO 18.0 DME VLC, OPERA (IAF).

LLEGADA SOPET CUATRO DELTA (SOPET4D). Sujeta a la actividad de la LED65.
SOPET, R-046 VLC / 20.0 DME VLC, ARCO 18.0 DME VLC, OPERA (IAF).

STANDARD INSTRUMENT ARRIVALS (STAR).

NOTE APPLICABLE TO ALL STAR:

- SPEED ADJUSTMENT
 - a) MAX IAS 250 kt at FL100 or below.
 - b) IAS 220 kt when leaving IAF CLS.

RUNWAY 12

ABOSI FOUR DELTA ARRIVAL (ABOSI4D)
ABOSI, DVOR/DME CLS (IAF).

NOTE: CALLES (IAF) CONVENTIONAL AND RNAV1 HOLDING PATTERNS OVERLAY.

ALTET FOUR DELTA ARRIVAL (ALT4D). Subject to LED66 activity.
VOR/DME ALT, R-003 ALT / 20.0 DME VLC, ARC 18.0 DME VLC, OPERA (IAF).

ARGOR THREE DELTA ARRIVAL (ARGOR3D)
ARGOR, DVOR/DME VLC (IAF).

ARGOR THREE JULIETT ARRIVAL (ARGOR3J). Subject to LED65 activity.

ARGOR, 288° SGO / 19.3 DME VLC, ARC 18.0 DME VLC, OPERA (IAF).

ASTRO FOUR JULIETT ARRIVAL (ASTRO4J)
ASTRO, R-232 VLC / 20.0 DME VLC, ARC 18.0 DME VLC, OPERA (IAF).

MABUX TWO DELTA ARRIVAL (MABUX2D)
MABUX, R-277 VLC / 20.0 DME VLC, ARC 18.0 DME VLC, OPERA (IAF).

MANDY FOUR DELTA ARRIVAL (MANDY4D)
MANDY, DVOR/DME CLS (IAF).

NOTE: CALLES (IAF) CONVENTIONAL AND RNAV1 HOLDING PATTERNS OVERLAY.

NARGO FOUR DELTA ARRIVAL (NARGO4D)
NARGO, R-208 VLC / 20.0 DME VLC, ARC 18.0 DME VLC, OPERA (IAF).

NINOT FIVE DELTA ARRIVAL (NINOT5D)
NINOT, DVOR/DME VLC (IAF).

NINOT THREE FOXTROT ARRIVAL (NINOT3F) B-RNAV. B-RNAV approval required.
NINOT, VL005, ARC 18.0 DME VLC, OPERA (IAF).

SAURA FOUR DELTA ARRIVAL (SAURA4D). Subject to LED65 activity.
SAURA, R-016 VLC / 20.0 DME VLC, ARC 18.0 DME VLC, OPERA (IAF).

SOPET FOUR DELTA ARRIVAL (SOPET4D). Subject to LED65 activity.
SOPET, R-046 VLC / 20.0 DME VLC, ARC 18.0 DME VLC, OPERA (IAF).

INTENCIONADAMENTE EN BLANCO
INTENTIONALLY BLANK