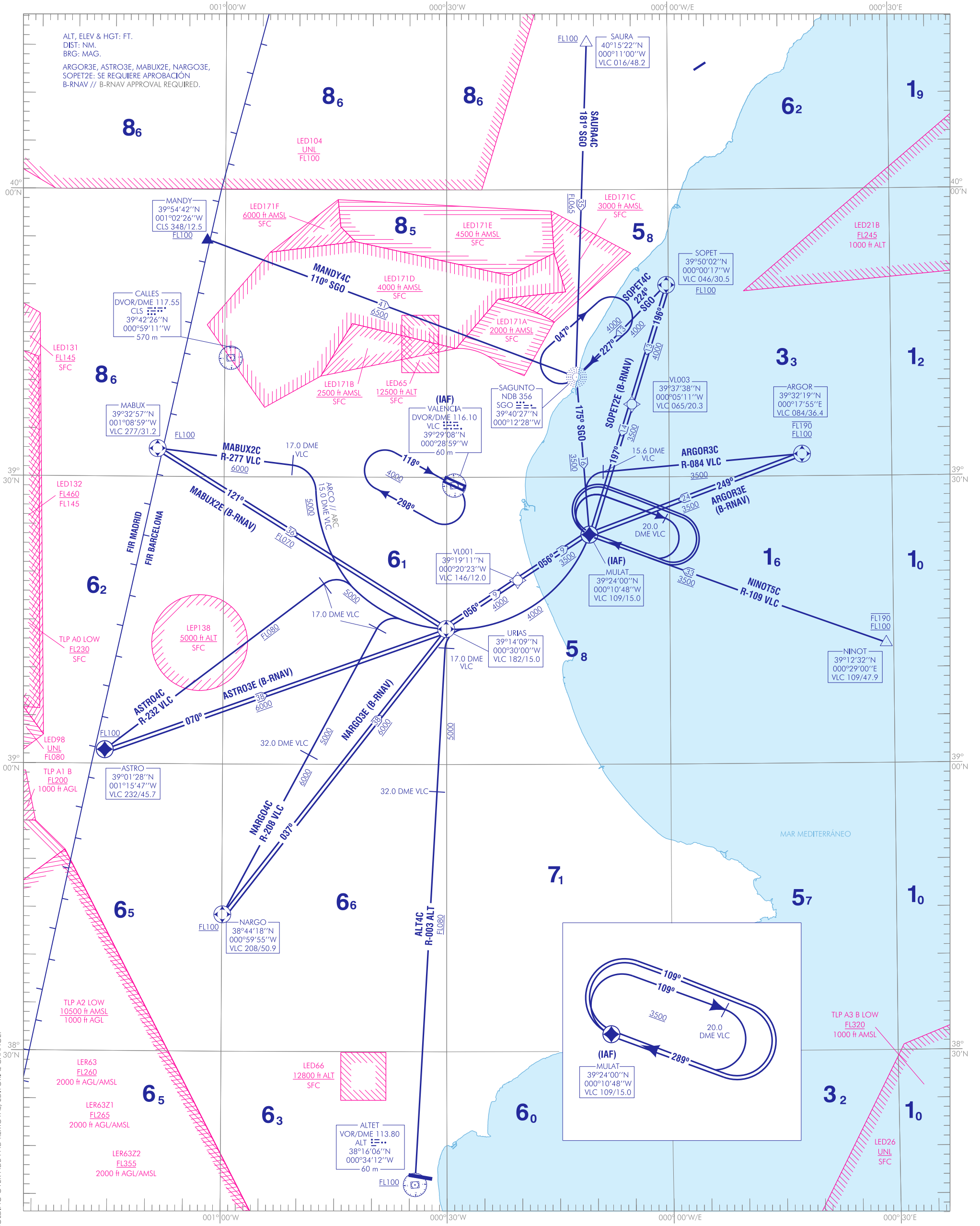


ALT4C	ARGOR3C	ARGOR3E	ASTRO4C
ASTRO3E	MABUX2C	MABUX2E	MANDY4C
NARGO4C	NARGO3E	NINOT5C	SAURA4C
SOPET4C	SOPET2E		

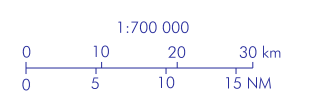
CARTA DE SALIDA NORMALIZADA
VUELO POR INSTRUMENTOS (STAR)-OACI

TA 6000
VAR 1° E (2020)

APP 120.100
TWR 118.550



NOTAS, RESTRICCIONES: VER DESCRIPCIÓN TEXTUAL.
NOTES, RESTRICTIONS: SEE TEXTUAL DESCRIPTION.



CAMBIOS: ZONAS, ELIMINACIÓN DEL NDB PND Y LA ESPERA SOBRE EL NDB PND, CAMBIO EDITORIAL.
CHANGES: AREAS, NDB PND AND HOLDING OVER NDB PND REMOVAL, EDITORIAL CHANGE.

INTENCIONADAMENTE EN BLANCO
INTENTIONALLY BLANK

VALENCIA AD

COORDENADAS WAYPOINTS // WAYPOINTS COORDINATES	
WPT	COORD
ARGOR	39°32'19.1"N 000°17'55.4"E
ASTRO	39°01'27.8"N 001°15'46.8"W
MABUX	39°32'57.1"N 001°08'59.1"W
MULAT	39°23'59.7"N 000°10'47.7"W
NARGO	38°44'17.9"N 000°59'55.2"W
SOPET	39°50'01.8"N 000°00'16.9"W
URIAS	39°14'09.0"N 000°29'59.6"W
VL001	39°19'10.8"N 000°20'22.7"W
VL003	39°37'38.4"N 000°05'10.8"W

LLEGADAS NORMALIZADAS POR INSTRUMENTOS (STAR)

NOTA APLICABLE A TODAS LAS STAR:

- AJUSTE DE VELOCIDAD
 - a) IAS MAX 250 kt a FL100 o inferior.
 - b) IAS 220 kt al abandonar el IAF MULAT.

PISTA 30

LLEGADA ALTET CUATRO CHARLIE (ALT4C). Sujeta a la actividad de la LED66.
VOR/DME ALT, R-003 ALT / 17.0 DME VLC, ARCO 15.0 DME VLC, MULAT (IAF).

LLEGADA ARGOR TRES CHARLIE (ARGOR3C)
ARGOR, R-084 VLC / 15.6 DME VLC, 175° NDB SGO, MULAT (IAF).

LLEGADA ARGOR TRES ECHO (ARGOR3E) B-RNAV. Se requiere aprobación B-RNAV.
ARGOR, MULAT (IAF).

LLEGADA ASTRO CUATRO CHARLIE (ASTRO4C)
ASTRO, R-232 VLC / 17.0 DME VLC, ARCO 15.0 DME VLC, URIAS, ARCO 15.0 DME VLC, MULAT (IAF).

LLEGADA ASTRO TRES ECHO (ASTRO3E) B-RNAV o vectores radar. Se requiere aprobación B-RNAV.
ASTRO, URIAS, VL001, MULAT (IAF).

LLEGADA MABUX DOS CHARLIE (MABUX2C)
MABUX, R-277 VLC / 17.0 DME VLC, ARCO 15.0 DME VLC, URIAS, ARCO 15.0 DME VLC, MULAT (IAF).

LLEGADA MABUX DOS ECHO (MABUX2E) B-RNAV. Se requiere aprobación B-RNAV.
MABUX, URIAS, VL001, MULAT (IAF).

LLEGADA MANDY CUATRO CHARLIE (MANDY4C). Sujeta a la actividad de la LED65.
MANDY, NDB SGO, MULAT (IAF).

LLEGADA NARGO CUATRO CHARLIE (NARGO4C)
NARGO, R-208 VLC / 17.0 DME VLC, ARCO 15.0 DME VLC, URIAS, ARCO 15.0 DME VLC, MULAT (IAF).

LLEGADA NARGO TRES ECHO (NARGO3E) B-RNAV o vectores radar. Se requiere aprobación B-RNAV.
NARGO, URIAS, VL001, MULAT (IAF).

LLEGADA NINOT CINCO CHARLIE (NINOT5C)
NINOT, MULAT (IAF).

LLEGADA SAURA CUATRO CHARLIE (SAURA4C)
SAURA, NDB SGO, MULAT (IAF).

STANDARD INSTRUMENT ARRIVALS (STAR)

NOTE APPLICABLE TO ALL STAR:

- SPEED ADJUSTMENT
 - a) MAX IAS 250 kt at FL100 or below.
 - b) IAS 220 kt when leaving IAF MULAT.

RUNWAY 30

ALTET FOUR CHARLIE ARRIVAL (ALT4C). Subject to LED66 activity.
VOR/DME ALT, R-003 ALT / 17.0 DME VLC, ARC 15.0 DME VLC, MULAT (IAF).

ARGOR THREE CHARLIE ARRIVAL (ARGOR3C)
ARGOR, R-084 VLC / 15.6 DME VLC, 175° NDB SGO, MULAT (IAF).

ARGOR THREE ECHO ARRIVAL (ARGOR3E) B-RNAV. B-RNAV approval required.
ARGOR, MULAT (IAF).

ASTRO FOUR CHARLIE ARRIVAL (ASTRO4C)
ASTRO, R-232 VLC / 17.0 DME VLC, ARC 15.0 DME VLC, URIAS, ARC 15.0 DME VLC, MULAT (IAF).

ASTRO THREE ECHO ARRIVAL (ASTRO3E) B-RNAV or radar vectoring. B-RNAV approval required.
ASTRO, URIAS, VL001, MULAT (IAF).

MABUX TWO CHARLIE ARRIVAL (MABUX2C)
MABUX, R-277 VLC / 17.0 DME VLC, ARC 15.0 DME VLC, URIAS, ARC 15.0 DME VLC, MULAT (IAF).

MABUX TWO ECHO ARRIVAL (MABUX2E) B-RNAV. B-RNAV approval required.
MABUX, URIAS, VL001, MULAT (IAF).

MANDY FOUR CHARLIE ARRIVAL (MANDY4C). Subject to LED65 activity.
MANDY, NDB SGO, MULAT (IAF).

NARGO FOUR CHARLIE ARRIVAL (NARGO4C)
NARGO, R-208 VLC / 17.0 DME VLC, ARC 15.0 DME VLC, URIAS, ARC 15.0 DME VLC, MULAT (IAF).

NARGO THREE ECHO ARRIVAL (NARGO3E) B-RNAV or radar vectoring. B-RNAV approval required.
NARGO, URIAS, VL001, MULAT (IAF).

NINOT FIVE CHARLIE ARRIVAL (NINOT5C)
NINOT, MULAT (IAF).

SAURA FOUR CHARLIE ARRIVAL (SAURA4C)
SAURA, NDB SGO, MULAT (IAF).

LLEGADA SOPET CUATRO CHARLIE (SOPET4C)
SOPET, NDB SGO, MULAT (IAF).

SOPET FOUR CHARLIE ARRIVAL (SOPET4C)
SOPET, NDB SGO, MULAT (IAF).

LLEGADA SOPET DOS ECHO (SOPET2E) B-RNAV o vectores
radar. Se requiere aprobación B-RNAV.
SOPET, VL003, MULAT (IAF).

SOPET TWO ECHO ARRIVAL (SOPET2E) B-RNAV or radar
vectoring. B-RNAV approval required
SOPET, VL003, MULAT (IAF).