

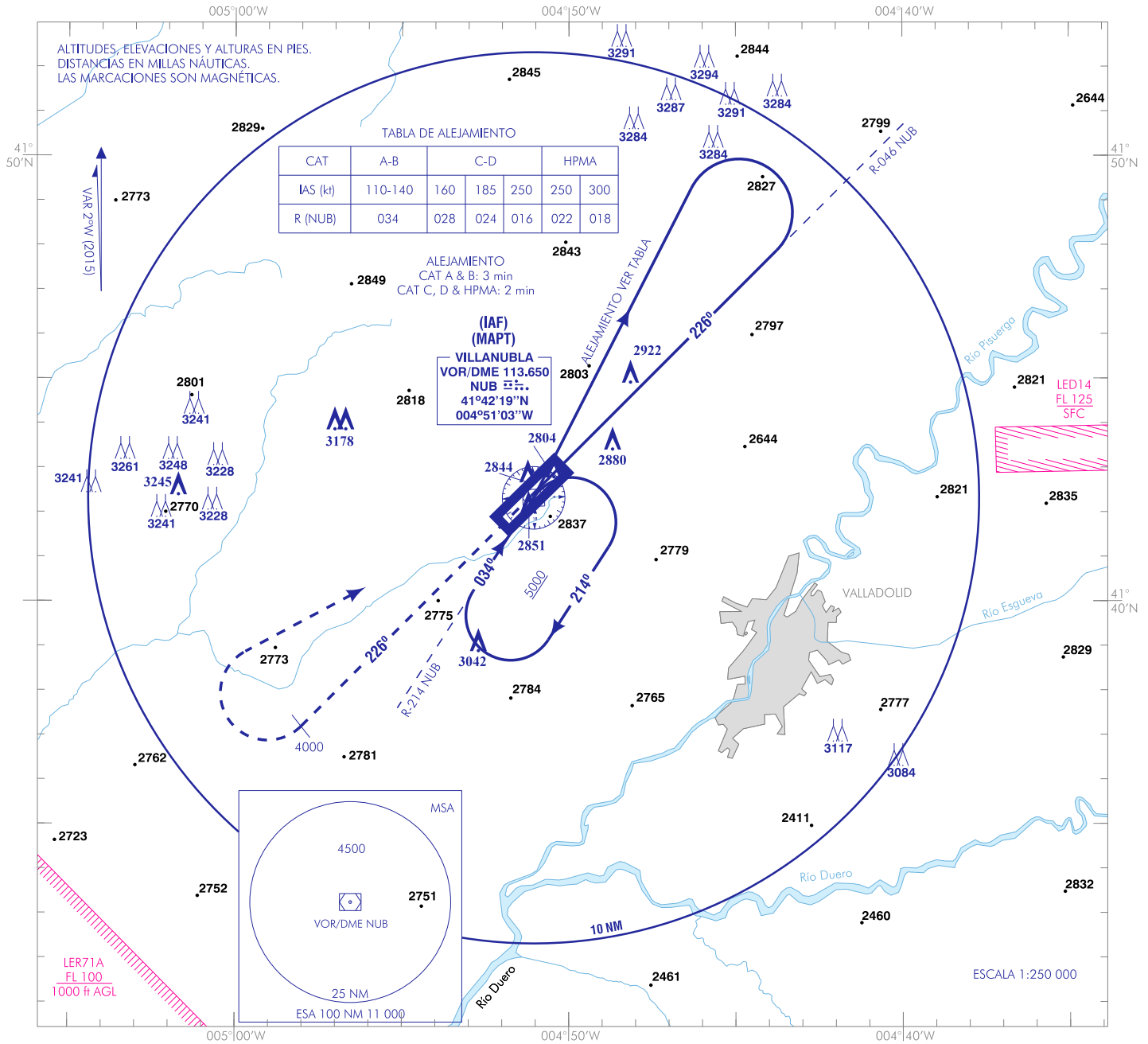
Obstáculos de más de 100 m no actualizados, ver correcciones manuscritas GEN 0.5 //
 Obstacles of more than 100 m not up-to-date, see hand amendments on section GEN 0.5

CARTA DE APROXIMACIÓN
 POR INSTRUMENTOS-MIPS

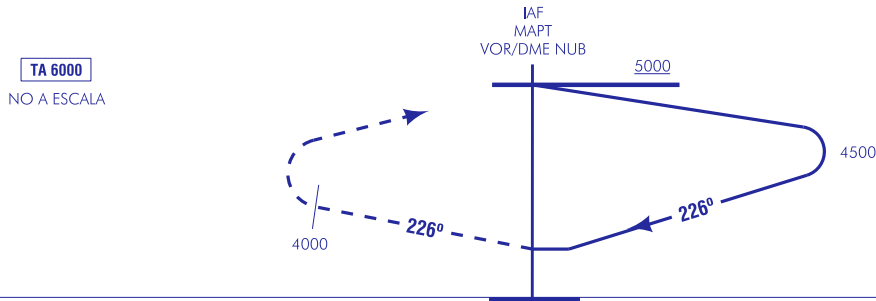
ELEV AD
 2775

APP 122.200
 TWR 139.300

VALLADOLID
 VOR
 RWY 23



FRUSTRADA: SUBIR DIRECTO A 4000 ft. VIRAR A LA DERECHA DIRECTO A VOR/DME NUB, ASCIENDIENDO A 5000 ft PARA INTEGRARSE A LA ESPERA.



CAMBIOS: ELEV AD.
 ELEV: 2775
 THR RWY 23

HGT REF ELEV THR RWY 23

| CATEGORÍA | A | B | C | D | HPMA |
|--|------------------------------|------------------------------|-------------------------------|------------------------------|------------------------------|
| S-VOR | 3220 / 1.2* 450 (500-1.2) | | 3340/2.0* 570 (600-2.0) | 3340 / 2.4* 570 (600-2.4) | |
| CIRCUITO | 3220/1.6 450 (500-1.6) | 3270/1.6 500 (500-1.6) | 3580/3.6 810 (900-3.6) | 3580/4.0 810 (900-4.0) | 3480/3.6 710 (800-3.6) |
| * CUANDO ALS U/S INCREMENTAR VIS EN 0.4 km | | | | | |

| GS | kt | 80 | 100 | 120 | 140 | 160 | 180 |
|-----------------|--------|--------|--------|-------|-------|-------|-------|
| FAF-THR: | min:s | | | | | | |
| FAF-MAPT: | min:s | | | | | | |
| ROD: | ft/min | | | | | | |
| ALT DME () FNA | | | | | | | |
| 13 DME | 12 DME | 11 DME | 10 DME | 9 DME | 8 DME | 7 DME | 6 DME |
| 5 DME | 4 DME | 3 DME | 2 DME | 1 DME | | | |

INTENCIONADAMENTE EN BLANCO
INTENTIONALLY BLANK