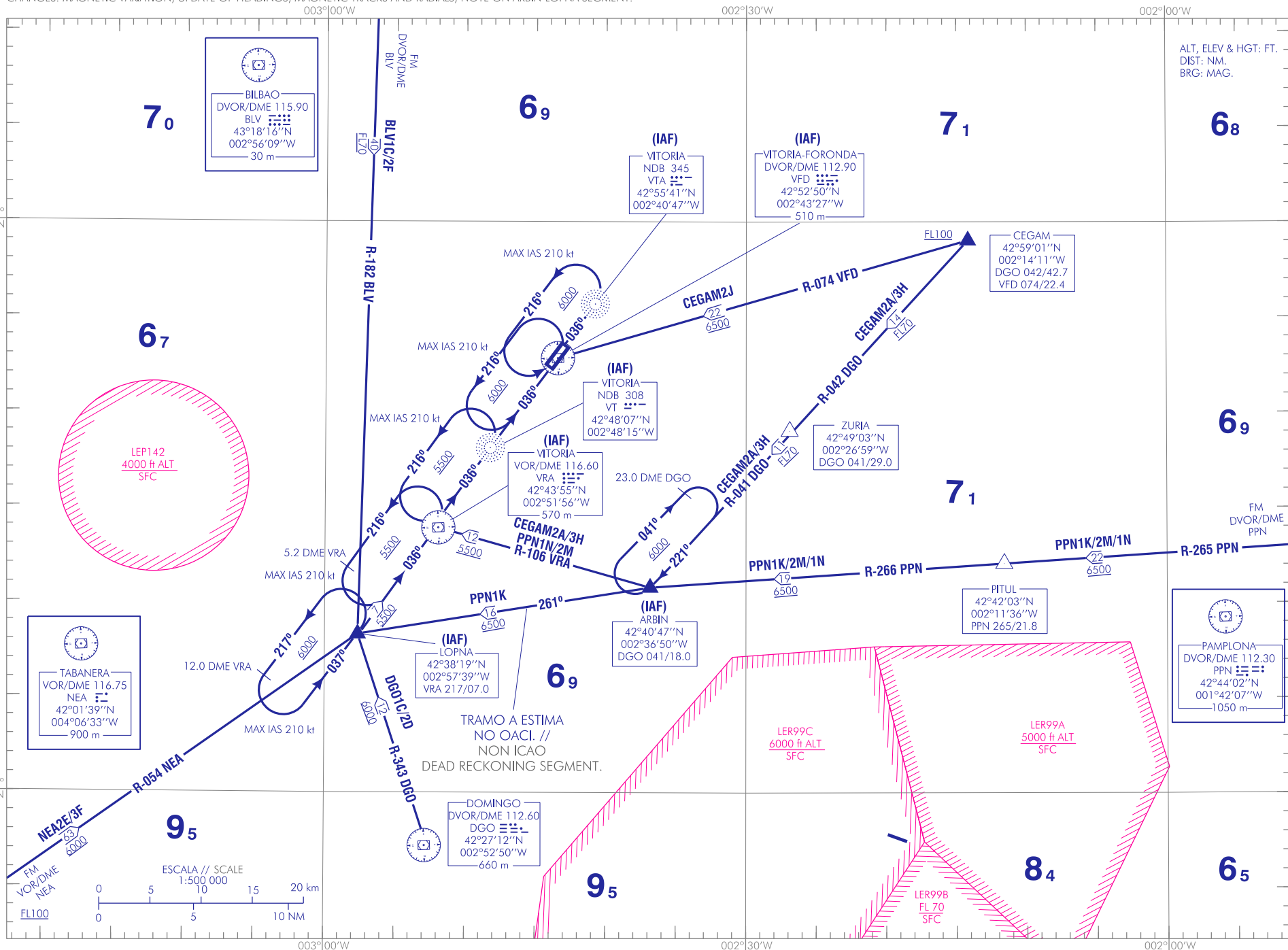


CAMBIOS: DECLINACIÓN MAGNÉTICA, ACTUALIZACIÓN DE RUMBOS, RUTAS MAGNÉTICAS Y RADIALES; NOTA EN TRAMO ARBIN-LOPNA. //
 CHANGES: MAGNETIC VARIATION, UPDATE OF HEADINGS, MAGNETIC TRACKS AND RADIALS; NOTE ON ARBIN-LOPNA SEGMENT.

WEF 18-JUN20 (AIRAC AMDT 05/20)

AIP-ESPAÑA

AD 2-LEVT STAR 1.1



CARTA DE LLEGADA NORMALIZADA
 VUELO POR INSTRUMENTOS (STAR)-OACI
 TA 6000
 VAR 0° (2020)
 APP 118.450
 TWR 118.450
 RWY04
 RWY22
 BLV1C
 CEGAM2A
 PPN1K
 NEAZ2
 BLV2F
 CEGAM3H
 DGO3D
 NEA3F
 BLV1C
 CEGAM2A
 PPN1K
 NEAZ2
 BLV2F
 CEGAM2J
 PPN2M
 DGO3D
 NEA3F

VITORIA

INTENCIONADAMENTE EN BLANCO
INTENTIONALLY BLANK

VITORIA AD

LLEGADAS NORMALIZADAS POR INSTRUMENTOS (STAR)

PISTA 04

LLEGADA BILBAO UNO CHARLIE (BLV1C)

DVOR/DME BLV, LOPNA (IAF), VOR/DME VRA (IAF), NDB VT (IAF).

LLEGADA CEGAM DOS ALPHA (CEGAM2A)

CEGAM, ZURIA, ARBIN (IAF), VOR/DME VRA (IAF), NDB VT (IAF).

LLEGADA DOMINGO UNO CHARLIE (DGO1C)

DVOR/DME DGO, LOPNA (IAF), VOR/DME VRA (IAF), NDB VT (IAF).

LLEGADA PAMPLONA UNO KILO (PPN1K)

DVOR/DME PPN, PITUL, ARBIN (IAF), LOPNA (IAF), VOR/DME VRA (IAF), NDB VT (IAF).

LLEGADA PAMPLONA UNO NOVEMBER (PPN1N)

DVOR/DME PPN, PITUL, ARBIN (IAF), VOR/DME VRA (IAF), NDB VT (IAF).

LLEGADA TABANERA DOS ECHO (NEA2E). Sujeta a la actividad de la LED10

VOR/DME NEA, LOPNA (IAF), VOR/DME VRA (IAF), NDB VT (IAF).

PISTA 22

LLEGADA BILBAO DOS FOXTROT (BLV2F)

DVOR/DME BLV, LOPNA, VOR/DME VRA, NDB VT, DVOR/DME VFD (IAF), NDB VTA (IAF).

LLEGADA CEGAM TRES HOTEL (CEGAM3H)

CEGAM, ZURIA, ARBIN, VOR/DME VRA, NDB VT, DVOR/DME VFD (IAF), NDB VTA (IAF).

LLEGADA CEGAM DOS JULIETT (CEGAM2J)

CEGAM, DVOR/DME VFD (IAF).

LLEGADA DOMINGO DOS DELTA (DGO2D)

DVOR/DME DGO, LOPNA, VOR/DME VRA, NDB VT, DVOR/DME VFD (IAF), NDB VTA (IAF).

LLEGADA PAMPLONA DOS MIKE (PPN2M)

DVOR/DME PPN, PITUL, ARBIN, VOR/DME VRA, NDB VT, DVOR/DME VFD (IAF).

LLEGADA TABANERA TRES FOXTROT (NEA3F). Sujeta a la actividad de la LED10

VOR/DME NEA, LOPNA, VOR/DME VRA, NDB VT, DVOR/DME VFD (IAF), NDB VTA (IAF).

STANDARD INSTRUMENT ARRIVALS (STAR).

RUNWAY 04

BILBAO ONE CHARLIE ARRIVAL (BLV1C)

DVOR/DME BLV, LOPNA (IAF), VOR/DME VRA (IAF), NDB VT (IAF).

CEGAM TWO ALPHA ARRIVAL (CEGAM2A)

CEGAM, ZURIA, ARBIN (IAF), VOR/DME VRA (IAF), NDB VT (IAF).

DOMINGO ONE CHARLIE ARRIVAL (DGO1C)

DVOR/DME DGO, LOPNA (IAF), VOR/DME VRA (IAF), NDB VT (IAF).

PAMPLONA ONE KILO ARRIVAL (PPN1K)

DVOR/DME PPN, PITUL, ARBIN (IAF), LOPNA (IAF), VOR/DME VRA (IAF), NDB VT (IAF).

PAMPLONA ONE NOVEMBER ARRIVAL (PPN1N)

DVOR/DME PPN, PITUL, ARBIN (IAF), VOR/DME VRA (IAF), NDB VT (IAF).

TABANERA TWO ECHO ARRIVAL (NEA2E). Subject to LED10 activity

VOR/DME NEA, LOPNA (IAF), VOR/DME VRA (IAF), NDB VT (IAF).

RUNWAY 22

BILBAO TWO FOXTROT ARRIVAL (BLV2F)

DVOR/DME BLV, LOPNA, VOR/DME VRA, NDB VT, DVOR/DME VFD (IAF), NDB VTA (IAF).

CEGAM THREE HOTEL ARRIVAL (CEGAM3H)

CEGAM, ZURIA, ARBIN, VOR/DME VRA, NDB VT, DVOR/DME VFD (IAF), NDB VTA (IAF).

CEGAM TWO JULIETT ARRIVAL (CEGAM2J)

CEGAM, DVOR/DME VFD (IAF).

DOMINGO TWO DELTA ARRIVAL (DGO2D)

DVOR/DME DGO, LOPNA, VOR/DME VRA, NDB VT, DVOR/DME VFD (IAF), NDB VTA (IAF).

PAMPLONA TWO MIKE ARRIVAL (PPN2M)

DVOR/DME PPN, PITUL, ARBIN, VOR/DME VRA, NDB VT, DVOR/DME VFD (IAF).

TABANERA THREE FOXTROT ARRIVAL (NEA3F). Subject to LED10 activity

VOR/DME NEA, LOPNA, VOR/DME VRA, NDB VT, DVOR/DME VFD (IAF), NDB VTA (IAF).

INTENCIONADAMENTE EN BLANCO
INTENTIONALLY BLANK