

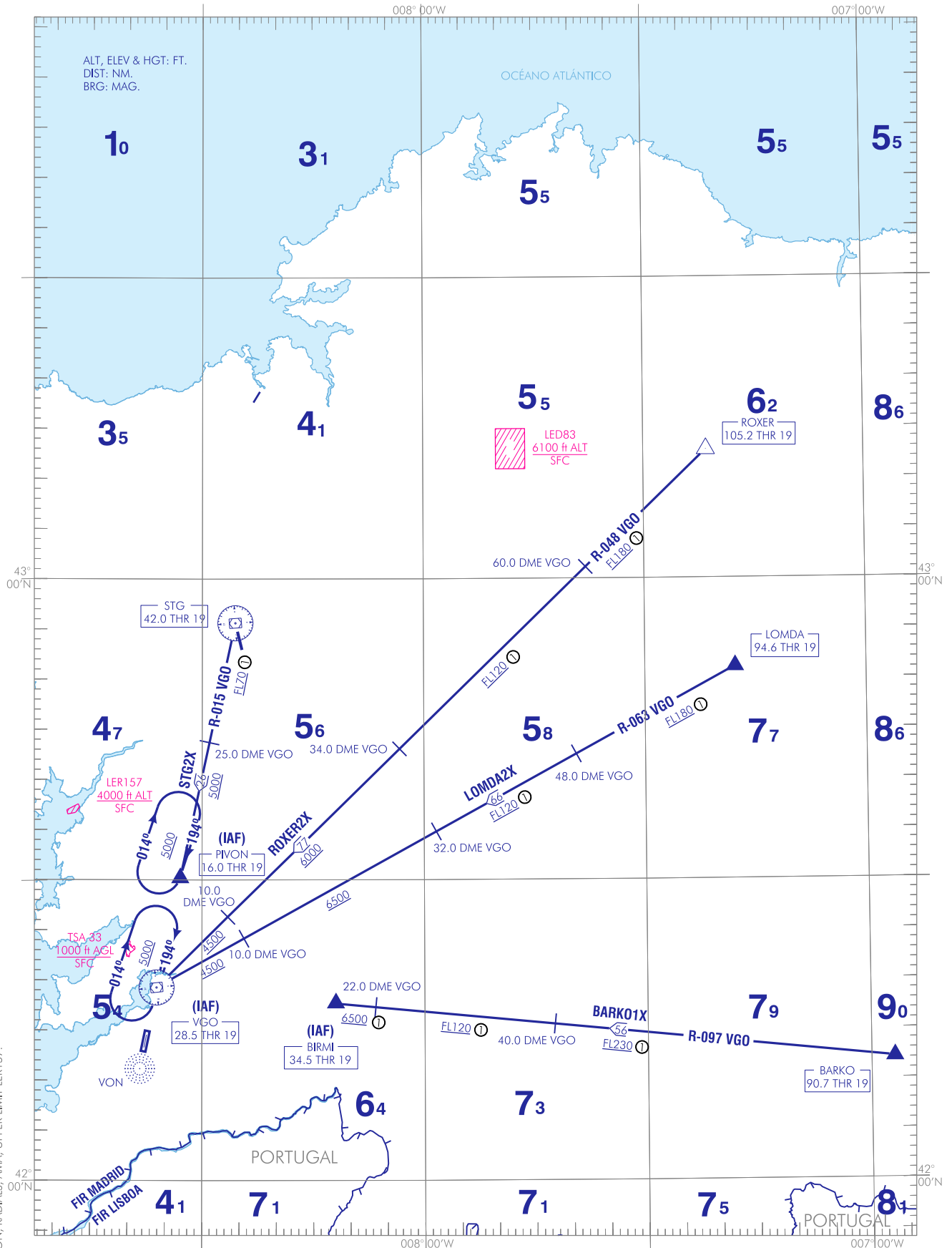
CARTA DE LLEGADA
VUELO POR INSTRUMENTOS-DESCENSO CONTINUO (CDA) VAR 2°W (2020)

TA 6000

APP 120.200
TWR 118.450

BARKO1X
ROXER2X

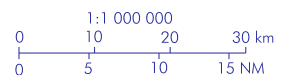
LOMDA2X
STG2X



CAMBIOS: DECLINACIÓN MAGNÉTICA, RADIALES, AMA, LÍMITE SUPERIOR LER157.
CHANGES: MAGNETIC VARIATION, RADIALS, AMA, UPPER LIMIT LER157.

NOTAS:
① ALTITUDES DEBIDAS A RESTRICIONES DE COBERTURA DEL DVOR/DME VGO.
- CARTA BAJO AUTORIZACIÓN ATC.

NOTES:
① ALTITUDES DUE TO DVOR/DME VGO COVERAGE RESTRICTIONS.
- CHART UNDER ATC CLEARANCE.



VIGO AD

COORDENADAS WAYPOINTS // WAYPOINTS COORDINATES

WPT	COORD
BARKO	42°12'02.2"N 006°56'40.6"W
BIRMI	42°17'40.0"N 008°11'56.2"W
LOMDA	42°51'10.1"N 007°17'45.7"W
PIVON	42°30'14.2"N 008°33'08.9"W
ROXER	43°12'46.8"N 007°21'27.2"W
STG DVOR/DME	42°55'36.7"N 008°25'31.4"W
VGO DVOR/DME	42°19'16.7"N 008°36'05.9"W
VON NDB (IAF)	42°11'09.8"N 008°38'20.4"W

LLEGADAS POR INSTRUMENTOS - DESCENSO CONTINUO (CDA)

INSTRUMENT ARRIVALS - CONTINUOUS DESCENT (CDA)

NOTA: CARTA BAJO AUTORIZACIÓN ATC.

NOTE: CHART UNDER ATC CLEARANCE.

PISTA 19

RUNWAY 19

LLEGADA BARKO UNO X-RAY (BARKO1X)
BARKO, BIRMI (IAF).

BARKO ONE X-RAY ARRIVAL (BARKO1X)
BARKO, BIRMI (IAF).

LLEGADA LOMDA DOS X-RAY (LOMDA2X)
LOMDA, DVOR/DME VGO (IAF).

LOMDA TWO X-RAY ARRIVAL (LOMDA2X)
LOMDA, DVOR/DME VGO (IAF).

LLEGADA ROXER DOS X-RAY (ROXER2X)
ROXER, DVOR/DME VGO (IAF).

ROXER TWO X-RAY ARRIVAL (ROXER2X)
ROXER, DVOR/DME VGO (IAF).

LLEGADA SANTIAGO DOS X-RAY (STG2X)
DVOR/DME STG, PIVON (IAF).

SANTIAGO TWO X-RAY ARRIVAL (STG2X)
DVOR/DME STG, PIVON (IAF).