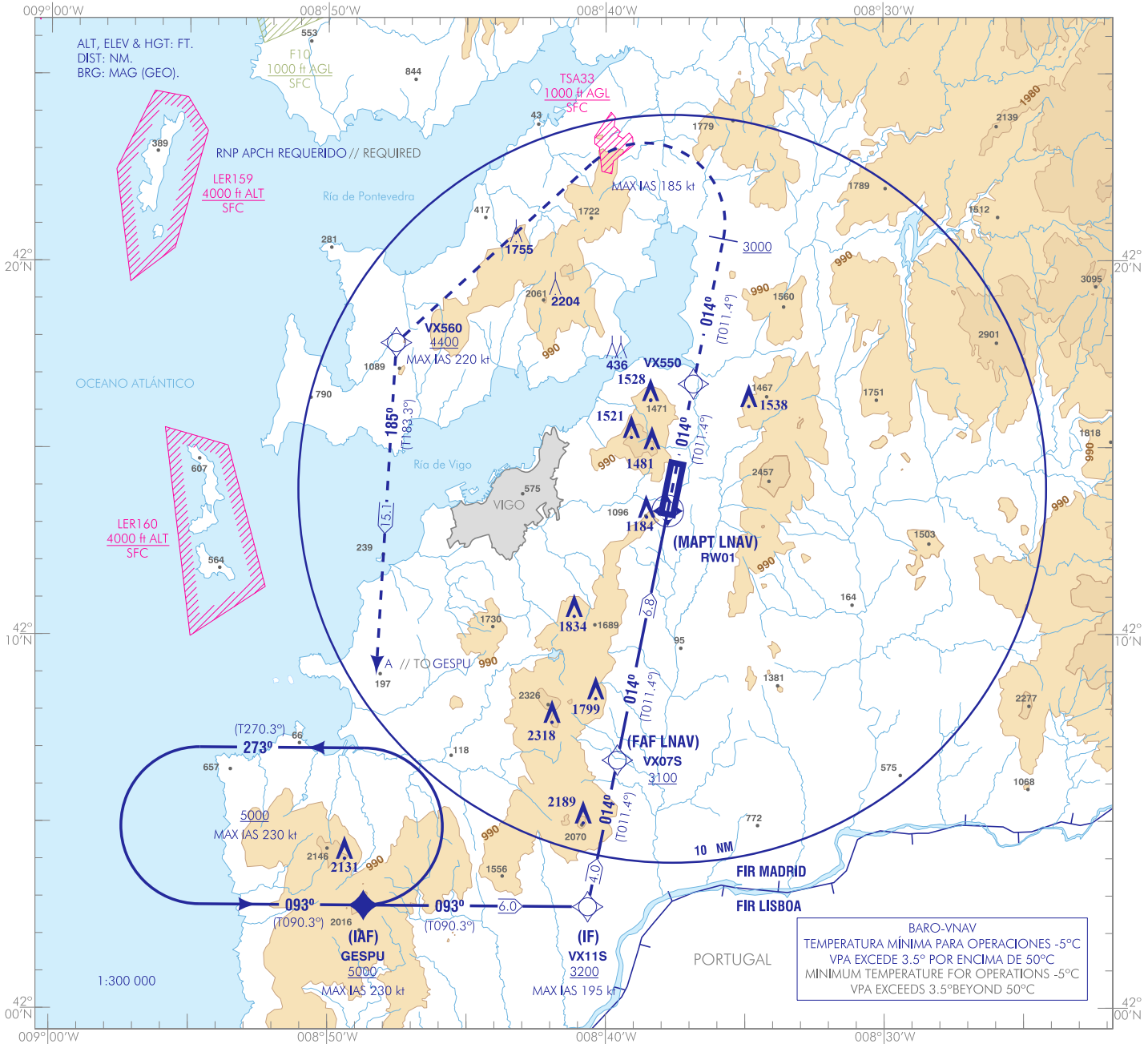


CARTA DE APROXIMACIÓN  
POR INSTRUMENTOS-OACI

ELEV AD  
856  
VAR 2°W (2020)

APP 120.200  
TWR 118.450  
GMC 121.700

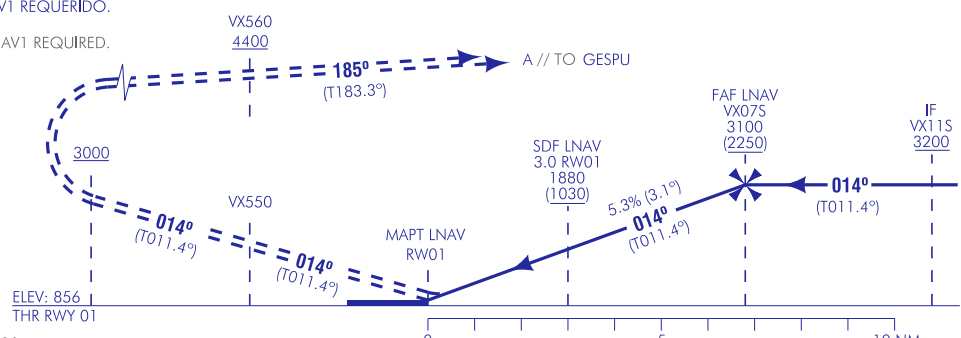
VIGO  
RNP Y  
RWY 01



CAMBIOS: DECLINACIÓN MAGNÉTICA, RUMBOS, LÍMITE SUPERIOR LER159 Y LER160, OBS. CHANGES: MAGNETIC VARIATION, HEADINGS, UPPER LIMIT LER159 AND LER160, OBS.

**FRUSTRADA:** SUBIR EN RUMBO MAGNÉTICO 014° HASTA VX550. ASCENDER EN RUMBO MAGNÉTICO 014° HASTA ALCANZAR 3000. VIRAR A LA IZQUIERDA (IAS MAX 185 kt) DIRECTO A VX560 A 4400 O SUPERIOR. VIRAR A LA IZQUIERDA (IAS MAX 220 kt) HASTA GESPU, PARA INTEGRARSE A LA ESPERA A 5000.  
**MISSED APCH:** CLIMB ON MAGNETIC HEADING 014° UP TO VX550. CLIMB ON MAGNETIC HEADING 014° UP TO REACH 3000. TURN LEFT (MAX IAS 185 kt) DIRECT TO VX560 AT 4400 OR ABOVE. TURN LEFT (MAX IAS 220 kt) UP TO GESPU, TO JOIN THE HOLDING AT 5000.

NOTAS:  
- ESPERA SOBRE GESPU: RNAV1 REQUERIDO.  
NOTES:  
- HOLDING OVER GESPU: RNAV1 REQUIRED.



| HGT REF ELEV THR RWY 01 |  | A    | B           | C          | D           |            |
|-------------------------|--|------|-------------|------------|-------------|------------|
| STA                     | OCA/H                                  |      |             |            |             |            |
|                         | LNAV                                   | 2.5% | 1550 (700)  |            |             |            |
| STA                     | LNAV / VNAV                            | 2.5% | 1320 (470)  | 1330 (480) | 1340 (490)  | 1360 (510) |
|                         | En circuito(H) sobre Circling (H) over | 856  | 1850 (1000) |            | 2250 (1400) |            |

| GS         | kt     | 80  | 100 | 120 | 140 | 160 | 180 |
|------------|--------|-----|-----|-----|-----|-----|-----|
| FAF-THR:   | min:s  |     |     |     |     |     |     |
| FAF-MAPT:  | min:s  |     |     |     |     |     |     |
| ROD: 5.3 % | ft/min | 432 | 540 | 649 | 757 | 865 | 973 |

| ALT/HGT RWY 01 FNA |    |    |    |   |   |   |             |             |             |             |            |   |
|--------------------|----|----|----|---|---|---|-------------|-------------|-------------|-------------|------------|---|
| 13                 | 12 | 11 | 10 | 9 | 8 | 7 | 6           | 5           | 4           | 3           | 2          | 1 |
|                    |    |    |    |   |   |   | 2860 (2000) | 2530 (1680) | 2210 (1350) | 1880 (1030) | 1560 (700) |   |

LNAV/VNAV RDH 49  
TA 6000

NO EN CIRCUITO NO CIRCLING CAT B, C & D

MSA

ARP 6300

**INTENCIONADAMENTE EN BLANCO**  
**INTENTIONALLY BLANK**

VIGO AD

REQUISITOS DE LA BASE DE DATOS AERONÁUTICA  
AERONAUTICAL DATABASE REQUIREMENTS

PROCEDIMIENTOS DE APROXIMACIÓN POR INSTRUMENTOS // INSTRUMENT APPROACH PROCEDURES

RWY 01 RNP Y

| COORDENADAS WAYPOINTS // WAYPOINTS COORDINATES   |                            |
|--|----------------------------|
| WPT  | COORD                      |
| GESPU (IAF)  | 42°02'46.0"N 008°48'41.8"W |
| VX11S (IF)   | 42°02'43.8"N 008°40'38.4"W |
| VX07S (FAF)  | 42°06'39.1"N 008°39'34.6"W |
| RW01   | 42°13'17.2"N 008°37'46.6"W |
| VX550  | 42°16'43.0"N 008°36'50.7"W |
| VX560  | 42°17'49.0"N 008°47'33.0"W |
| Aproximación final APV Baro (LNAV/VNAV) - Ángulo de descenso (Pendiente). //<br>APV Baro final approach (LNAV/VNAV) - Descent angle (Slope).   |                            |
| 3.06° (5.34%)  |                            |
| Aproximación final de no precisión (LNAV) - Ángulo de descenso (Pendiente). //<br>Non-precision final approach (LNAV) - Descent angle (Slope). |                            |
| 3.06° (5.34%)  |                            |

DESCRIPCIÓN TABULAR DEL PROCEDIMIENTO  
 PROCEDURE TABULAR DESCRIPTION

| Número de serie<br>Serial number                   | Descriptor de trayectoria<br>Path Terminator | Identificador de punto de recorrido<br>Waypoint identifier | Sobrevuelo<br>Fly-over | Curso/Derrota<br>Course/Track °M (°T) | Variación magnética<br>Magnetic variation | Distancia<br>Distance (NM) | Dirección de viraje<br>Turn direction | Altitud<br>Altitude (ft) | Velocidad<br>Speed (kt) | VPA/TCH<br>(°/ft) | Especificación de navegación<br>Navigation specification |
|--|--|--|------------------------|---------------------------------------|---|----------------------------|---------------------------------------|--------------------------|-------------------------|-------------------|--|
| <b>→ GESPU (IAF)</b>                               |  |  |                        |                                       |   |                            |                                       |                          |                         |                   |  |
| 001  | IF   | GESPU  | -                      | -                                     | +2.2                                      | -                          | -                                     | +5000                    | -230                    | -                 | RNP APCH   |
| 002  | TF   | VX11S  | -                      | 093 (090.3)                           | +2.2                                      | 6.0                        | -                                     | +3200                    | -195                    | -                 | RNP APCH   |
| 003  | TF   | VX07S  | -                      | 014 (011.4)                           | +2.2                                      | 4.0                        | -                                     | +3100                    | -                       | -                 | RNP APCH   |
| 004  | TF   | RW01   | Y                      | 014 (011.4)                           | +2.2                                      | 6.8                        | -                                     | +905                     | -                       | -3.0/50           | RNP APCH   |
| <b>→ APROXIMACIÓN FRUSTRADA // MISSED APPROACH</b> |  |  |                        |                                       |   |                            |                                       |                          |                         |                   |  |
| 005  | CF   | VX550  | -                      | 014 (011.4)                           | +2.2                                      | -                          | -                                     | -                        | -                       | -                 | RNP APCH   |
| 006  | CA   | -  | -                      | 014 (011.4)                           | +2.2                                      | -                          | -                                     | +3000                    | -185                    | -                 | RNP APCH   |
| 007  | DF   | VX560  | -                      | -                                     | +2.2                                      | -                          | L                                     | +4400                    | -220                    | -                 | RNP APCH   |
| 008  | TF   | GESPU  | -                      | 185 (183.3)                           | +2.2                                      | 15.1                       | -                                     | @5000                    | -                       | -                 | RNP APCH   |

CIRCUITOS DE ESPERA // HOLDING PATTERN

| Descriptor de trayectoria<br>Path terminator | Identificador de punto de recorrido<br>Waypoint identifier | Sobrevuelo<br>Fly-over | Curso/Derrota<br>Course/Track °M (°T) | Variación magnética<br>Magnetic variation | Distancia/<br>Tiempo de alejamiento<br>Distance/<br>Outbound time | Dirección de viraje<br>Turn direction | Altitud MNM<br>MNM altitude (ft) | Altitud MAX<br>MAX altitude (ft) | Velocidad<br>Speed (kt) | Especificación de navegación<br>Navigation specification |
|--|--|------------------------|---------------------------------------|---|---|---------------------------------------|----------------------------------|----------------------------------|-------------------------|--|
| <b>→</b> HM                                  | GESPU  | -                      | 093 (090.3)                           | +2.2                                      | 1 MIN   | L                                     | 5000                             | -                                | -230                    | RNAV1  |