

Ver correcciones manuscritas GEN 0.5
See hand amendments on section GEN 0.5

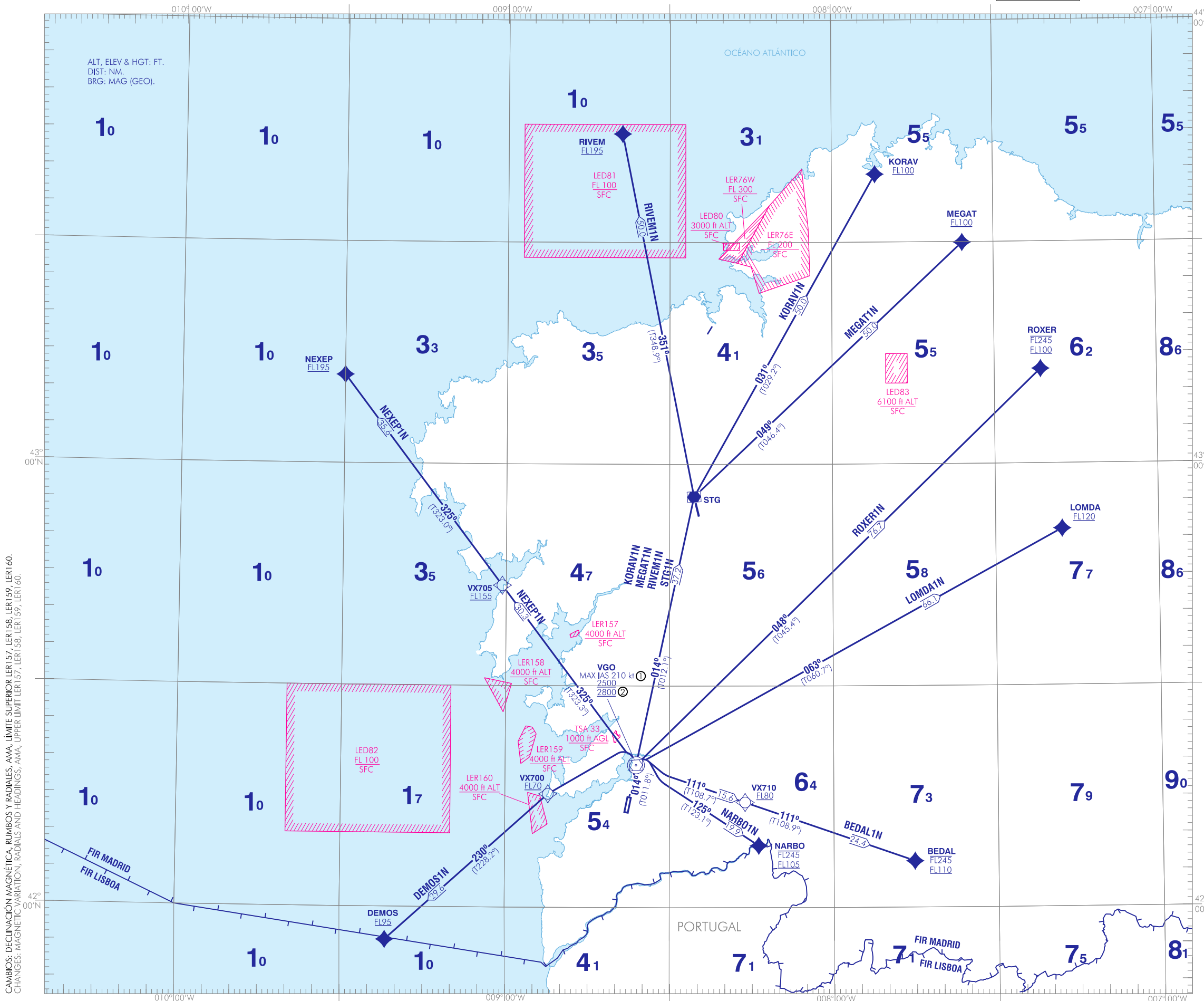
VIGO
RWY 01

| | | |
|---------|---------|---------|
| BEDAL1N | DEMOS1N | KORAV1N |
| LOMDA1N | MEGAT1N | NARBO1N |
| NEXEP1N | RIVEM1N | ROXER1N |
| STG1N | | |

CARTA DE SALIDA NORMALIZADA
VUELO POR INSTRUMENTOS (SID)-OACI

TA 6000
VAR 2°W (2020)

APP 120.200
TWR 118.450



**PROCEDIMIENTOS DE SALIDA RNAV1 (GNSS)
RNAV1 (GNSS) DEPARTURE PROCEDURES**

NOTAS:
① EXC KORAV1N, MEGAT1N, RIVEM1N, STG1N
② NARBO1N, NEXEP1N
- SE REQUIERE APROBACIÓN RNAV1.
- GNSS REQUERIDO.
- NOTAS, RESTRICCIONES, OBST CERCANOS QUE VULNERAN LAS OIS: VER DESCRIPCIÓN TEXTUAL.

NOTES:
① EXC KORAV1N, MEGAT1N, RIVEM1N, STG1N
② NARBO1N, NEXEP1N
- RNAV1 APPROVAL REQUIRED.
- GNSS REQUIRED.
- NOTES, RESTRICTIONS, CLOSE-IN OBST WHICH PENETRATE THE OIS: SEE TEXTUAL DESCRIPTION.

CAMBIOS: DECLINACIÓN MAGNÉTICA, RUMBOS Y RADIALES, AMA, LÍMITE SUPERIOR LER157, LER158, LER159, LER160.
CHANGES: MAGNETIC VARIATION, RADIALS AND HEADINGS, AMA, UPPER LIMIT LER157, LER158, LER159, LER160.

INTENCIONADAMENTE EN BLANCO
INTENTIONALLY BLANK

VIGO AD

| COORDENADAS WAYPOINTS // WAYPOINTS COORDINATES | |
|--|----------------------------|
| WPT | COORD |
| BEDAL | 42°06'16.8"N 007°45'14.2"W |
| DEMOS | 41°55'32.5"N 009°21'43.2"W |
| KORAV | 43°39'11.2"N 007°51'56.1"W |
| LOMDA | 42°51'10.1"N 007°17'45.7"W |
| MEGAT | 43°29'55.9"N 007°35'47.3"W |
| NARBO | 42°08'23.3"N 008°13'41.8"W |
| NEXEP | 43°11'56.0"N 009°29'59.3"W |
| RIVEM | 43°44'39.6"N 008°38'49.5"W |
| ROXER | 43°12'46.8"N 007°21'27.2"W |
| STG | 42°55'36.7"N 008°25'31.4"W |
| VGO | 42°19'16.7"N 008°36'05.9"W |
| VX700 | 42°15'22.0"N 008°52'10.0"W |
| VX705 | 42°43'34.0"N 009°00'43.0"W |
| VX710 | 42°14'15.0"N 008°16'11.0"W |



SALIDAS NORMALIZADAS POR INSTRUMENTOS (SID) RNAV (GNSS)

STANDARD INSTRUMENT DEPARTURES (SID) RNAV (GNSS)

PISTA 01

RUNWAY 01

NOTAS APLICABLE A TODAS LAS SID:

NOTES APPLICABLE TO ALL SID:

- RNAV1 requerido.
- GNSS requerido.

- RNAV1 required.
- GNSS required.

DESCRIPCIÓN TABULAR DEL PROCEDIMIENTO
PROCEDURE TABULAR DESCRIPTION

| Número de serie Serial number | Descriptor de trayectoria Path Terminator | Identificador de punto de recorrido Waypoint identifier | Sobrevuelo Fly-over | Curso/Derrota Course/Track °M (°T) | Variación magnética Magnetic variation | Distancia Distance (NM) | Dirección de viraje Turn direction | Altitud Altitude (ft) | Velocidad Speed (kt) | VPA/TCH (°/ft) | Especificación de navegación Navigation specification |
|--|--|--|------------------------|--|---|-------------------------------|---------------------------------------|-----------------------------|----------------------------|-------------------|--|
| BEDAL1N RNAV1 | | | | | | | | | | | |
| Pendiente mínima de ascenso 5.8% hasta VX710. // Minimum climb gradient of 5.8% up to VX710. | | | | | | | | | | | |
| 001 | CF | VGO | Y | 014 (011.8) | +2.2 | - | - | +2500 | -210 | - | RNAV1 |
| 002 | TF | VX710 | - | 111 (108.7) | +2.2 | 15.6 | R | +FL80 | - | - | RNAV1 |
| 003 | TF | BEDAL | - | 111 (108.9) | +2.2 | 24.4 | - | +FL110 - FL245 | - | - | RNAV1 |
| DEMOS1N RNAV1 | | | | | | | | | | | |
| Pendiente mínima de ascenso 5.8% hasta VX700. // Minimum climb gradient of 5.8% up to VX700. | | | | | | | | | | | |
| 001 | CF | VGO | Y | 014 (011.8) | +2.2 | - | - | +2500 | -210 | - | RNAV1 |
| 002 | DF | VX700 | - | - | +2.2 | - | L | +FL70 | - | - | RNAV1 |
| 003 | TF | DEMOS | - | 230 (228.2) | +2.2 | 29.6 | - | +FL95 | - | - | RNAV1 |
| KORAV1N RNAV1 | | | | | | | | | | | |
| Sujeta a la actividad de la LER76E. // Subject to LER76E activity. Pendiente mínima de ascenso: 5.8% hasta VGO. // Minimum climb gradient of 5.8 % up to VGO. | | | | | | | | | | | |
| 001 | CF | VGO | Y | 014 (011.8) | +2.2 | - | - | +2500 | - | - | RNAV1 |
| 002 | TF | STG | - | 014 (012.1) | +2.2 | 37.2 | - | - | - | - | RNAV1 |
| 003 | TF | KORAV | - | 031 (029.2) | +2.2 | 50.0 | - | +FL100 | - | - | RNAV1 |
| LOMDA1N RNAV1 | | | | | | | | | | | |
| Pendiente mínima de ascenso 5.8% hasta VGO. // Minimum climb gradient of 5.8% up to VGO. | | | | | | | | | | | |
| 001 | CF | VGO | Y | 014 (011.8) | +2.2 | - | - | +2500 | -210 | - | RNAV1 |
| 002 | TF | LOMDA | - | 063 (060.7) | +2.2 | 66.1 | - | +FL120 | - | - | RNAV1 |
| MEGAT1N RNAV1 | | | | | | | | | | | |
| Pendiente mínima de ascenso 5.8% hasta VGO. // Minimum climb gradient of 5.8% up to VGO. | | | | | | | | | | | |
| 001 | CF | VGO | Y | 014 (011.8) | +2.2 | - | - | +2500 | - | - | RNAV1 |
| 002 | TF | STG | - | 014 (012.1) | +2.2 | 37.2 | - | - | - | - | RNAV1 |
| 003 | TF | MEGAT | - | 049 (046.4) | +2.2 | 50.0 | - | +FL100 | - | - | RNAV1 |
| NARBO1N RNAV1 | | | | | | | | | | | |
| Pendiente mínima de ascenso 7.0% hasta NARBO. // Minimum climb gradient of 7.0% up to NARBO | | | | | | | | | | | |
| 001 | CF | VGO | Y | 014 (011.8) | +2.2 | - | - | +2800 | -210 | - | RNAV1 |
| 002 | TF | NARBO | - | 125 (123.1) | +2.2 | 19.9 | R | +FL105 - FL245 | - | - | RNAV1 |
| NEXEP1N RNAV1 | | | | | | | | | | | |
| Pendiente mínima de ascenso 7.0% hasta VX705. // Minimum climb gradient of 7.0% up to VX705. | | | | | | | | | | | |
| 001 | CF | VGO | Y | 014 (011.8) | +2.2 | - | - | +2800 | -210 | - | RNAV1 |
| 002 | TF | VX705 | - | 325 (323.3) | +2.2 | 30.3 | - | +FL155 | - | - | RNAV1 |
| 003 | TF | NEXEP | - | 325 (323.0) | +2.2 | 35.6 | - | +FL195 | - | - | RNAV1 |
| RIVEM1N RNAV1 | | | | | | | | | | | |
| Pendiente mínima de ascenso 5.8% hasta VGO. // Minimum climb gradient of 5.8% up to VGO. | | | | | | | | | | | |
| 001 | CF | VGO | Y | 014 (011.8) | +2.2 | - | - | +2500 | - | - | RNAV1 |
| 002 | TF | STG | - | 014 (012.1) | +2.2 | 37.2 | - | - | - | - | RNAV1 |
| 003 | TF | RIVEM | - | 351 (348.9) | +2.2 | 50.0 | - | +FL195 | - | - | RNAV1 |
| ROXER1N RNAV1 | | | | | | | | | | | |
| Pendiente mínima de ascenso 5.8% hasta VGO. // Minimum climb gradient of 5.8% up to VGO. | | | | | | | | | | | |
| 001 | CF | VGO | Y | 014 (011.8) | +2.2 | - | - | +2500 | -210 | - | RNAV1 |
| 002 | TF | ROXER | - | 048 (045.4) | +2.2 | 76.7 | - | +FL100 - FL245 | - | - | RNAV1 |
| STG1N RNAV1 | | | | | | | | | | | |
| Pendiente mínima de ascenso 5.8% hasta VGO. // Minimum climb gradient of 5.8% up to VGO. | | | | | | | | | | | |
| 001 | CF | VGO | Y | 014 (011.8) | +2.2 | - | - | +2500 | - | - | RNAV1 |
| 002 | TF | STG | - | 014 (012.1) | +2.2 | 37.2 | - | - | - | - | RNAV1 |

| OBSTÁCULOS CERCANOS // CLOSE-IN OBSTACLES | | | | | |
|---|-----|---------------------|-----------------------|----------|----------|
| OBSTÁCULOS OBSTACLES | RWY | LATITUD LATITUDE | LONGITUD LONGITUDE | HGT (ft) | ALT (ft) |
| Farola // Lamppost | 01 | 42°14'39.3584"N | 008°37'30.6898"W | 30 | 854 |
| Árbol // Tree | 01 | 42°14'42.4837"N | 008°37'31.3121"W | 66 | 887 |

| OBSTÁCULOS SIGNIFICATIVOS // SIGNIFICANT OBSTACLES | | | | | |
|--|-----|---------------------|-----------------------|----------|----------|
| OBSTÁCULOS OBSTACLES | RWY | LATITUD LATITUDE | LONGITUD LONGITUDE | HGT (ft) | ALT (ft) |
| Árbol // Tree | 01 | 42°15'51.7538"N | 08°37'31.1196"W | 91 | 1177 |
| Terreno // Terrain | 01 | 42°15'51.8150"N | 08°37'32.3020"W | 0 | 1084 |
| Terreno // Terrain | 01 | 42°18'21.2355"N | 08°25'35.0867"W | 0 | 2934 |
| Terreno // Terrain | 01 | 42°17'48.1075"N | 08°25'56.1316"W | 0 | 2885 |
| Antena // Antenna | 01 | 42°19'47.6748"N | 08°41'21.5184"W | 245 | 2289 |
| Antena // Antenna | 01 | 42°19'48.7747"N | 08°41'18.6024"W | 191 | 2244 |
| Terreno // Terrain | 01 | 42°19'48.3624"N | 08°41'18.1168"W | 0 | 2046 |
| Aerogenerador // Wind turbine | 01 | 42°26'52.6569"N | 08°24'20.3479"W | 258 | 3412 |
| Aerogenerador // Wind turbine | 01 | 42°26'49.3163"N | 08°24'17.5474"W | 256 | 3368 |
| Aerogenerador // Wind turbine | 01 | 42°26'26.0741"N | 08°24'26.9626"W | 257 | 3301 |

INTENCIONADAMENTE EN BLANCO
INTENTIONALLY BLANK