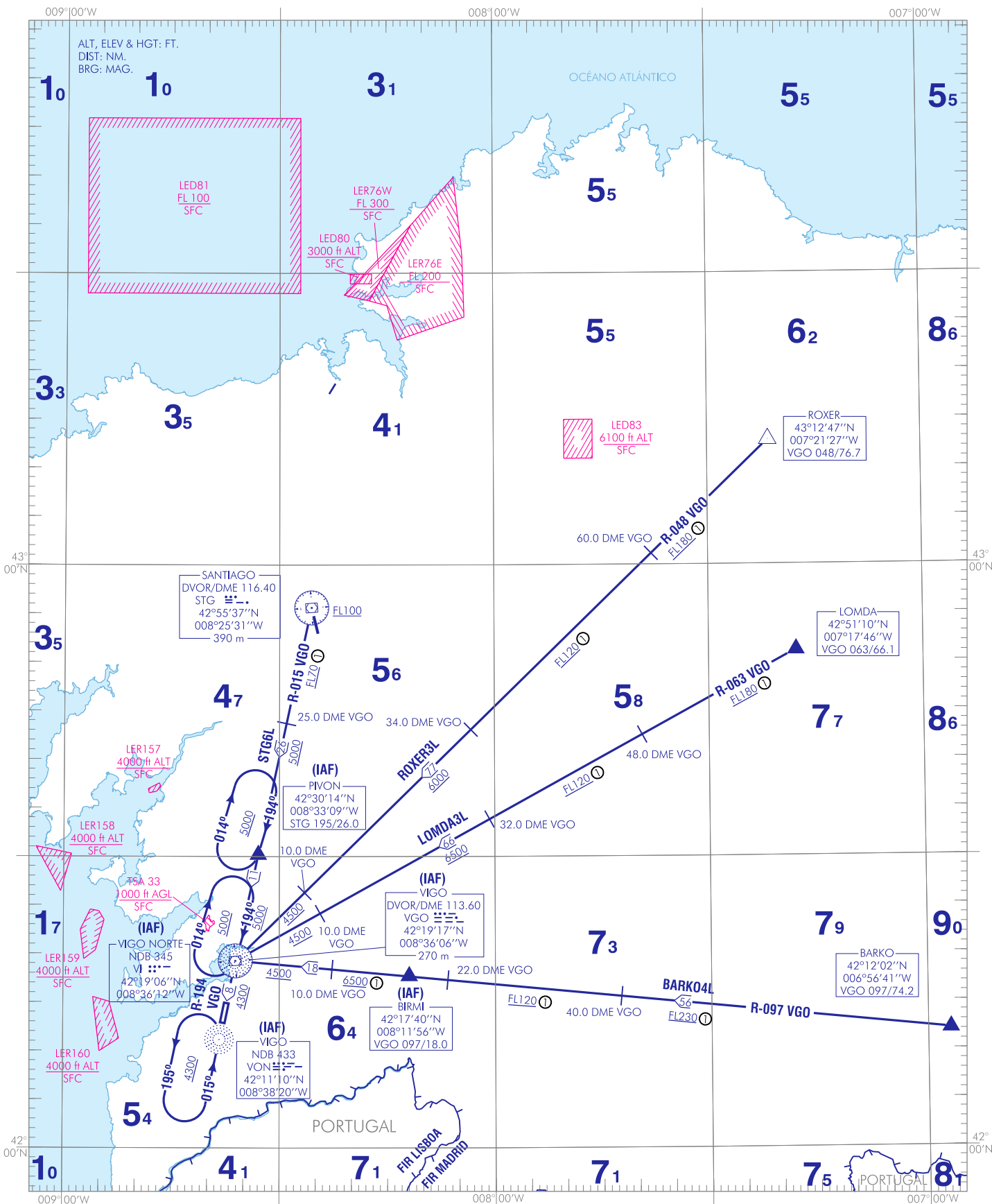
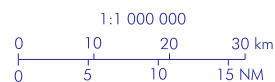


CAMBIOS: DECLINACIÓN MAGNÉTICA, RUMBOS Y RADIALES; AMA, LÍMITE SUPERIOR LER157, LER158, LER159, LER160, COORD DVOR EN VEZ DE DME.  
CHANGES: MAGNETIC VARIATION, RADIALS AND HEADINGS, AMA, UPPER LIMIT LER157, LER158, LER159, LER160, DVOR COORD INSTEAD OF DME.



NOTAS:  
① ALTITUDES DEBIDAS A RESTRICCIONES DE COBERTURA DEL DVOR/DME VGO.

NOTES:  
① ALTITUDES DUE TO DVOR/DME VGO COVERAGE RESTRICTIONS.



---

VIGO AD

---

LLEGADAS NORMALIZADAS POR INSTRUMENTOS (STAR)

STANDARD INSTRUMENT ARRIVALS (STAR)

PISTA 01/19

RUNWAY 01/19

- LLEGADA BARKO CUATRO LIMA (BARKO4L)  
BARKO, BIRMI (IAF), DVOR/DME VGO (IAF), NDB VON (IAF).
- LLEGADA LOMDA TRES LIMA (LOMDA3L)  
LOMDA, DVOR/DME VGO (IAF), NDB VON (IAF).
- LLEGADA ROXER TRES LIMA (ROXER3L)  
ROXER, DVOR/DME VGO (IAF), NDB VON (IAF).
- LLEGADA SANTIAGO SEIS LIMA (STG6L)  
DVOR/DME STG, PIVON (IAF), DVOR/DME VGO (IAF), NDB VON (IAF).

- BARKO FOUR LIMA ARRIVAL (BARKO4L)  
BARKO, BIRMI (IAF), DVOR/DME VGO (IAF), NDB VON (IAF).
- LOMDA THREE LIMA ARRIVAL (LOMDA3L)  
LOMDA, DVOR/DME VGO (IAF), NDB VON (IAF).
- ROXER THREE LIMA ARRIVAL (ROXER3L)  
ROXER, DVOR/DME VGO (IAF), NDB VON (IAF).
- SANTIAGO SIX LIMA ARRIVAL (STG6L)  
DVOR/DME STG, PIVON (IAF), DVOR/DME VGO (IAF), NDB VON (IAF).