

CARTA DE LLEGADA
VUELO POR INSTRUMENTOS - DESCENSO CONTINUO (CDA)-MIPS

TA 6000

VAR 0° (2015)

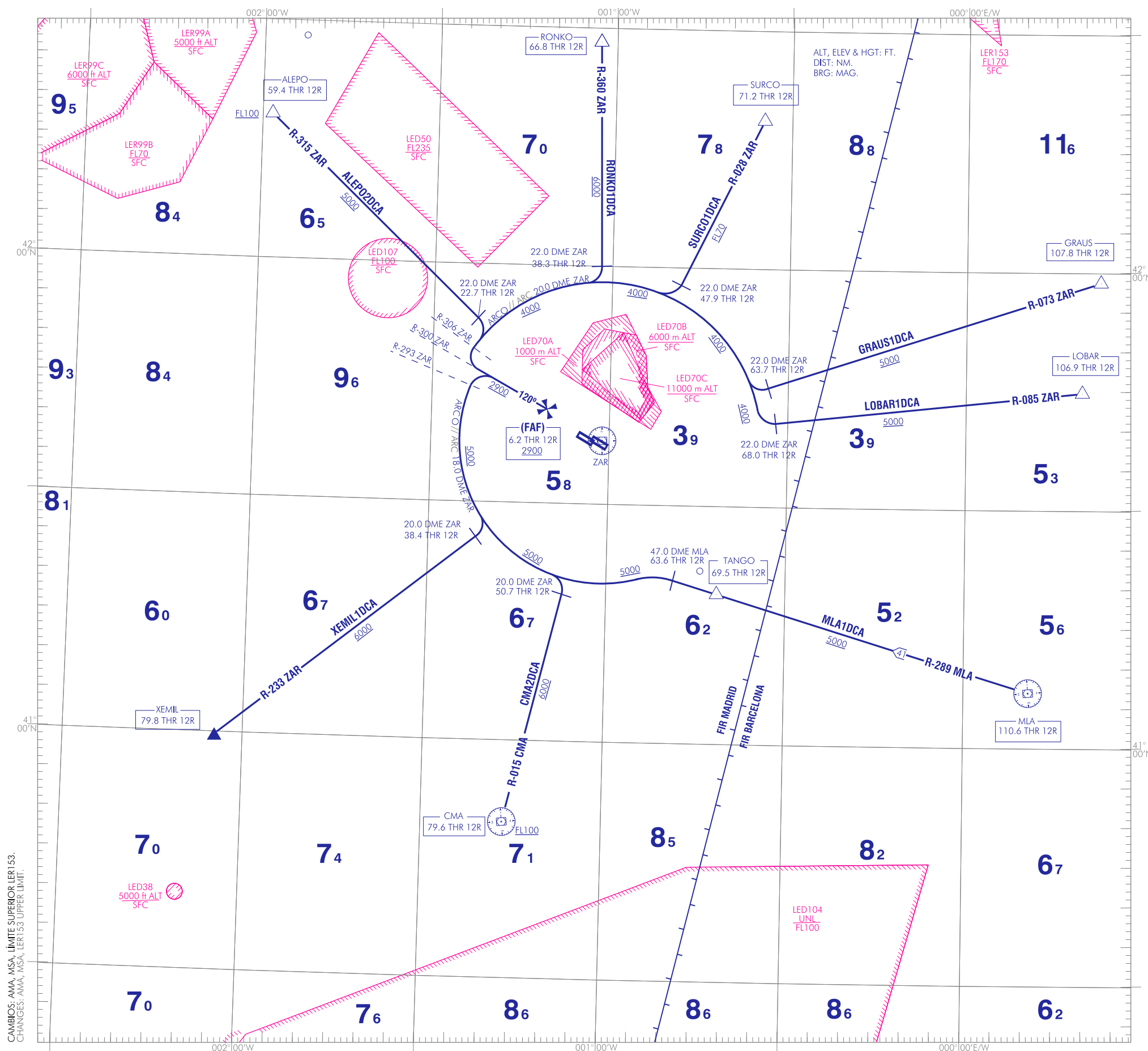
APP 119.300
296.750

TWR 122.100
292.200

ALEPO2DCA
LOBAR1DCA
SURCO1DCA

CMA2DCA
MLA1DCA
XEMIL1DCA

GRAUS1DCA
RONKO1DCA

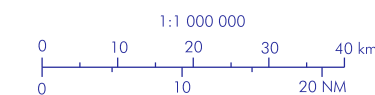
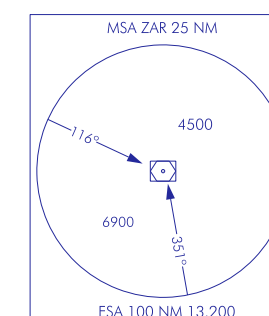


**CARTA BAJO AUTORIZACIÓN ATC
CHART UNDER ATC CLEARANCE**

**APROXIMACIÓN FINAL: VOR RWY 12R
FINAL APPROACH: VOR RWY 12R**

**HORARIO DE OPERACIÓN DEL PROCEDIMIENTO:
PROCEDURE OPERATIONAL HOURS:
V: 15:00-05:00; I: 16:00-06:00**

IDENT	COORD	
ALEPO	42° 20' 37" N	001° 57' 48" W
CMA VOR/DME	40° 52' 02" N	001° 17' 53" W
FAF	41° 43' 50" N	001° 12' 08" W
GRAUS	41° 58' 45" N	000° 22' 35" E
LOBAR	41° 44' 53" N	000° 19' 06" E
MLA DVOR/DME	41° 07' 47" N	000° 09' 56" E
RONKO	42° 29' 45" N	001° 01' 50" W
SURCO	42° 19' 44" N	000° 34' 05" W
TANGO	41° 20' 38" N	000° 41' 54" W
XEMIL	41° 02' 00" N	002° 06' 31" W
ZAR VOR/DME	41° 39' 28" N	001° 01' 51" W



CAMBIOS: AMA, MSA, LÍMITE SUPERIOR LER153.
CHANGES: AMA, MSA, LER153 UPPER LIMIT.

INTENCIONADAMENTE EN BLANCO
INTENTIONALLY BLANK

ZARAGOZA AD

LLEGADAS POR INSTRUMENTOS - DESCENSO CONTINUO (CDA) - MIPS

HORARIO DE OPERACIÓN DEL PROCEDIMIENTO:
V: 15:00-05:00; I: 16:00-06:00.

NOTA: CARTA BAJO AUTORIZACIÓN ATC.

PISTA 12R

→ LLEGADA ALEPO DOS DELTA CHARLIE ALPHA (ALEPO2DCA).
Sujeta a la actividad de la LED107
ALEPO, R-315 ZAR/22.0 DME ZAR, ARCO 20.0 DME ZAR, R-306
ZAR/ARCO 20.0 DME ZAR, R-300 ZAR, (FAF).

→ LLEGADA CALAMOCHA DOS DELTA CHARLIE ALPHA (CMA2DCA)
VOR/DME CMA, R-015 CMA/20.0 DME ZAR, ARCO 18.0 DME
ZAR, R-293 ZAR/ ARCO 18.0 DME ZAR, R-300 ZAR, (FAF).

LLEGADA GRAUS UNO DELTA CHARLIE ALPHA (GRAUS1DCA)
GRAUS, R-073 ZAR/22.0 DME ZAR, ARCO 20.0 DME ZAR, R-306
ZAR/ARCO 20.0 DME ZAR, R-300 ZAR, (FAF).

LLEGADA LOBAR UNO DELTA CHARLIE ALPHA (LOBAR1DCA)
LOBAR, R-085 ZAR/22.0 DME ZAR, ARCO 20.0 DME ZAR, R-306
ZAR/ARCO 20.0 DME ZAR, R-300 ZAR, (FAF).

LLEGADA MAELLA UNO DELTA CHARLIE ALPHA (MLA1DCA)
DVOR/DME MLA, R-289 MLA, TANGO, R-289 MLA/47.0 DME
ZAR, ARCO 18.0 DME ZAR, R-293 ZAR/ ARCO 18.0 DME ZAR,
R-300 ZAR, (FAF).

LLEGADA RONKO UNO DELTA CHARLIE ALPHA (RONKO1DCA)
RONKO, R-360 ZAR/22.0 DME ZAR, ARCO 20.0 DME ZAR, R-306
ZAR/ARCO 20.0 DME ZAR, R-300 ZAR, (FAF).

LLEGADA SURCO UNO DELTA CHARLIE ALPHA (SURCO1DCA)
SURCO, R-028 ZAR/22.0 DME ZAR, ARCO 20.0 DME ZAR, R-306
ZAR/ARCO 20.0 DME ZAR, R-300 ZAR, (FAF).

LLEGADA XEMIL UNO DELTA CHARLIE ALPHA (XEMIL1DCA)
XEMIL, R-233 ZAR/20.0 DME ZAR, ARCO 18.0 DME ZAR, R-293
ZAR/ARCO 18.0 DME ZAR, R-300 ZAR, (FAF).

INSTRUMENT ARRIVALS - CONTINUOUS DESCENT (CDA) - MIPS

PROCEDURE HOURS OF OPERATION:
V: 15:00-05:00; I: 16:00-06:00.

NOTE: CHART UNDER ATC CLEARANCE.

RUNWAY 12R

ALEPO TWO DELTA CHARLIE ALPHA ARRIVAL (ALEPO2DCA).
Subject to LED107activity
ALEPO, R-315 ZAR/22.0 DME ZAR, ARC 20.0 DME ZAR, R-306
ZAR/ARC 20.0 DME ZAR, R-300 ZAR, (FAF).

CALAMOCHA TWO DELTA CHARLIE ALPHA ARRIVAL (CMA2DCA)
VOR/DME CMA, R-015 CMA/20.0 DME ZAR, ARC 18.0 DME ZAR,
R-293 ZAR/ARC 18.0 DME ZAR, R-300 ZAR, (FAF).

GRAUS ONE DELTA CHARLIE ALPHA ARRIVAL (GRAUS1DCA)
GRAUS, R-073 ZAR/22.0 DME ZAR, ARC 20.0 DME ZAR, R-306
ZAR/ARC 20.0 DME ZAR, R-300 ZAR, (FAF).

LOBAR ONE DELTA CHARLIE ALPHA ARRIVAL (LOBAR1DCA)
LOBAR, R-085 ZAR/22.0 DME ZAR, ARC 20.0 DME ZAR, R-306
ZAR/ARC 20.0 DME ZAR, R-300 ZAR, (FAF).

MAELLA ONE DELTA CHARLIE ALPHA ARRIVAL (MLA1DCA)
DVOR/DME MLA, R-289 MLA, TANGO, R-289 MLA/47.0 DME
ZAR, ARC 18.0 DME ZAR, R-293 ZAR/ARC 18.0 DME ZAR, R-300
ZAR, (FAF).

RONKO ONE DELTA CHARLIE ALPHA ARRIVAL (RONKO1DCA)
RONKO, R-360 ZAR/22.0 DME ZAR, ARC 20.0 DME ZAR, R-306
ZAR/ARC 20.0 DME ZAR, R-300 ZAR, (FAF).

SURCO ONE DELTA CHARLIE ALPHA ARRIVAL (SURCO1DCA)
SURCO, R-028 ZAR/22.0 DME ZAR, ARC 20.0 DME ZAR, R-306
ZAR/ARC 20.0 DME ZAR, R-300 ZAR, (FAF).

XEMIL ONE DELTA CHARLIE ALPHA ARRIVAL (XEMIL1DCA)
XEMIL, R-233 ZAR/20.0 DME ZAR, ARC 18.0 DME ZAR, R-293
ZAR/ARC 18.0 DME ZAR, R-300 ZAR, (FAF).

INTENCIONADAMENTE EN BLANCO
INTENTIONALLY BLANK