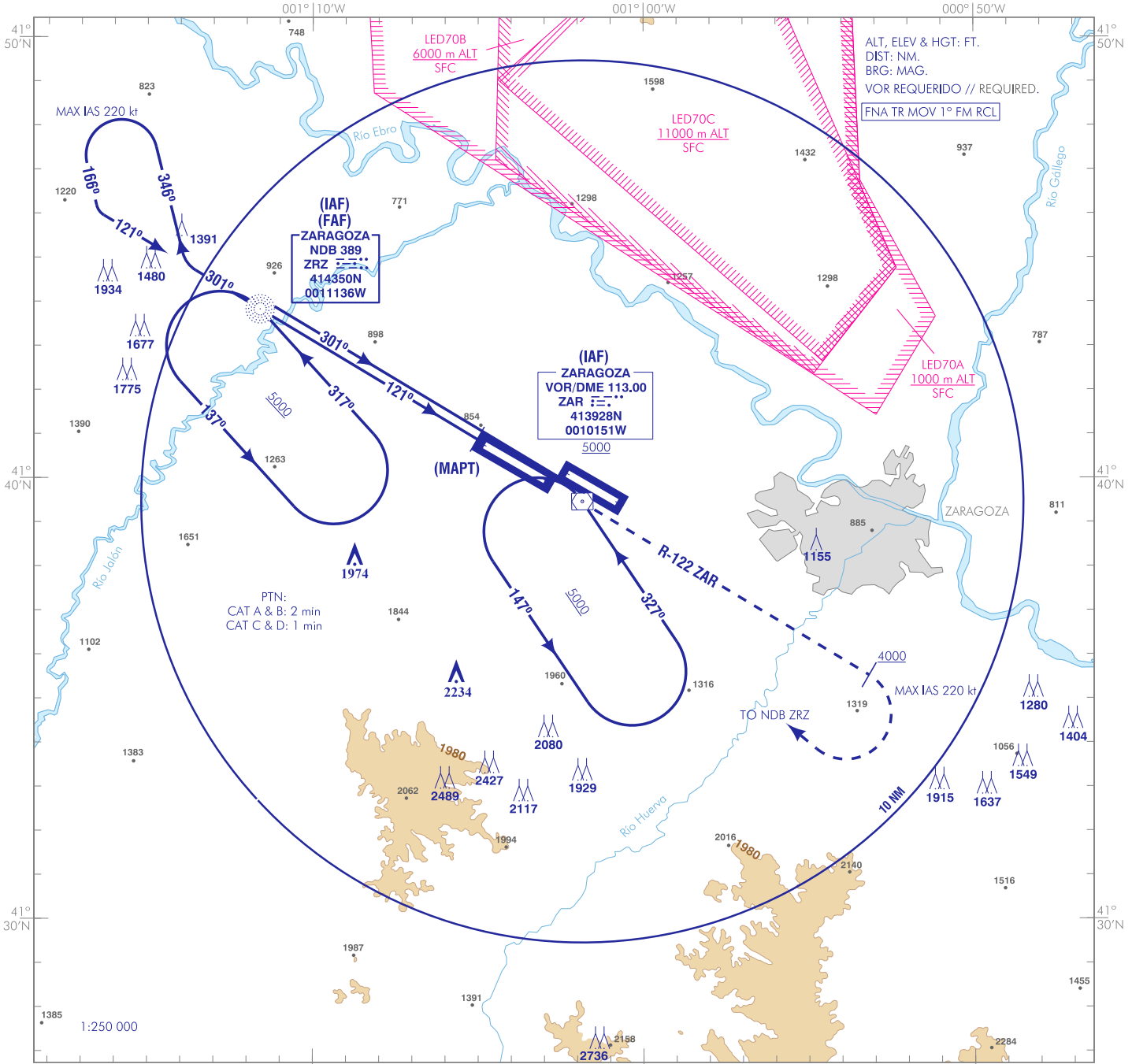


CARTA DE APROXIMACIÓN
POR INSTRUMENTOS-OACI

ELEV AD
862
VAR 0° (2020)

APP 119.305 C
296.750 MHz
TWR 122.100 MHz
292.200 MHz
GCA 130.025 MHz

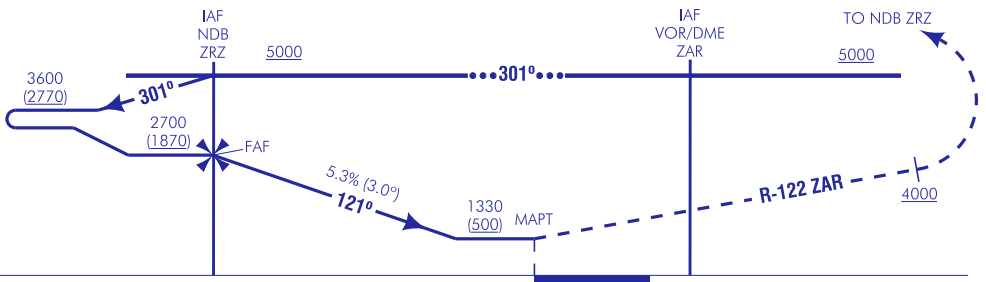
ZARAGOZA
NDB Z
RWY 12R



FRUSTRADA: SUBIR DIRECTO AL VOR/DME ZAR. PROCEDER POR EL R-122 ZAR ASCIENDIENDO A 4000 . VIRAR A LA DERECHA (IAS MAX 220 kt) DIRECTO AL NDB ZRZ ASCIENDIENDO A 5000 PARA INTEGRARSE A LA ESPERA.

MISSED APCH: STRAIGHT AHEAD TO VOR/DME ZAR. PROCEED ON R-122 ZAR CLIMBING TO 4000. TURN RIGHT (MAX IAS 220 kt) DIRECT TO NDB ZRZ CLIMBING TO 5000 AND HOLD.

NOTAS:
 - PRECAUCIÓN: A PARTIR DE FLO70 EXISTEN INTERFERENCIAS ENTRE LAS ÁREAS DE ESPERA Y LA ZONA LED70.
 - NO SE HA CONSIDERADO EL ÁREA TOPE AL DETERMINAR LA ALTITUD MÍNIMA DE ESPERA.
 - CAUTION: STARTING FROM FLO70 THERE IS INTERFERENCE BETWEEN HOLDING AREAS AND LED70.
 - BUFFER AREA NOT CONSIDERED TO ESTABLISH HOLDING MINIMUM ALTITUDE.

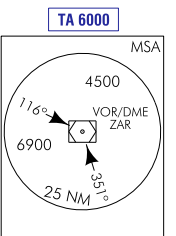


HGT REF ELEV THR RWY 12R

| STA | OCA/H | A B C D | | | |
|---------------------|-------|------------|------------|-------------|-------------|
| | | A | B | C | D |
| | 2.5% | | 1330 (500) | | |
| En círculo(H) sobre | 862 | 1500 (640) | 1610 (750) | 2370 (1510) | 2630 (1770) |

| GS | kt | 80 | 100 | 120 | 140 | 160 | 180 |
|-------------------------|--------|------|------|------|------|------|------|
| FAF-THR: | min:s | | | | | | |
| FAF-MAPT: 5.8 NM | ft/min | 4:22 | 3:30 | 2:55 | 2:30 | 2:11 | 1:57 |
| ROD: 5.3% | ft/min | 427 | 534 | 640 | 747 | 854 | 960 |

| ALT/HGT DME () FNA | | | | | | | | | | | | |
|---------------------|----|----|----|---|---|---|---|---|---|---|---|---|
| 13 | 12 | 11 | 10 | 9 | 8 | 7 | 6 | 5 | 4 | 3 | 2 | 1 |



CAMBIOS: CORRECCIÓN RUMBO DE LA APROXIMACIÓN FINAL EN PLANTA.
CHANGES: HEADING FINAL APPROACH CORRECTION IN PLANET.

ZARAGOZA AD

REQUISITOS DE LA BASE DE DATOS AERONÁUTICA
AERONAUTICAL DATABASE REQUIREMENTS

PROCEDIMIENTOS DE APROXIMACIÓN POR INSTRUMENTOS // INSTRUMENT APPROACH PROCEDURES

NDB Z RWY 12R

| PUNTO POINT | LAT | LONG | AZIMUT VERDADERO TRUE BEARING | DISTANCIA DME DME DISTANCE (NM) |
|--|-----------|------------|----------------------------------|---------------------------------------|
| VOR/DME ZAR (IAF) | 413928.4N | 0010151.1W | - | - |
| NDB ZRZ (IAF/FAF) | 414349.9N | 0011136.0W | - | - |
| MAPT | 414048.7N | 0010456.5W | - | THR 12R |
| Aproximación final de no precisión - Pendiente (Ángulo de descenso) // Non-precision final approach - Slope (Descent angle) | | | | 5.27% (3.02°) |