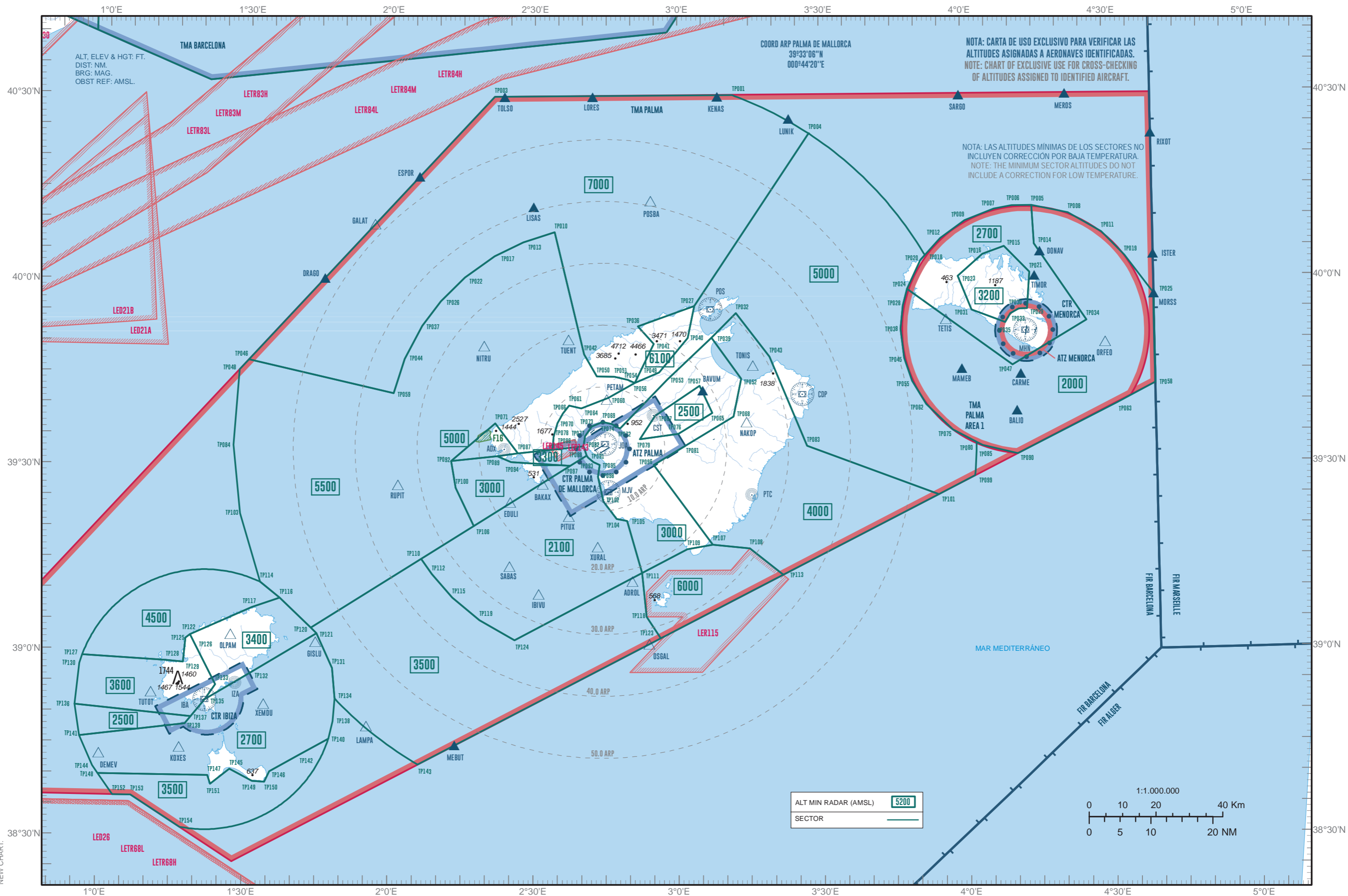


IBIZA APP	134.825	IBIZA TWR	118.500
MENORCA APP	119.650	MENORCA TWR	118.200
PALMA APP	119.405	PALMA TWR	118.305
	119.155		118.455



CARTA NUEVA. NEW CHART.

INTENCIONADAMENTE EN BLANCO
INTENTIONALLY BLANK

PUNTOS QUE DEFINEN LOS SECTORES
SECTORS DEFINED BY POINTS

PUNTO POINT	COORD	OBSERVACIONES REMARKS	PUNTO POINT	COORD	OBSERVACIONES REMARKS
TP001	40°30'17"N 003°11'43"E	Arc 60.0 DME JOA, sentido horario, hasta TP004. Arc 60.0 DME JOA, clockwise, up to TP004.	TP043	39°47'56"N 003°19'15"E	
TP003	40°30'00"N 002°21'30"E		TP044	39°47'32"N 002°02'50"E	
TP004	40°24'01"N 003°27'49"E	Arc 60.0 DME JOA, sentido horario, hasta TP018. Arc 60.0 DME JOA, clockwise, up to TP018.	TP045	39°47'32"N 003°47'29"E	
TP005	40°12'01"N 004°14'38"E		TP046	39°47'12"N 001°30'13"E	
TP006	40°11'59"N 004°10'27"E		TP047	39°46'14"N 004°10'08"E	
TP007	40°11'30"N 004°06'43"E		TP048	39°45'33"N 001°28'16"E	
TP008	40°10'40"N 004°22'20"E		TP049	39°45'27"N 002°56'06"E	
TP009	40°09'42"N 004°00'32"E		TP050	39°44'48"N 002°43'03"E	
TP010	40°08'07"N 002°34'10"E		TP051	39°44'45"N 002°46'46"E	
TP011	40°07'32"N 004°29'18"E		TP052	39°44'24"N 003°13'17"E	
TP012	40°06'53"N 003°55'20"E		TP053	39°44'18"N 002°57'51"E	
TP013	40°06'29"N 002°27'33"E		TP054	39°44'15"N 002°49'32"E	
TP014	40°05'46"N 004°15'04"E		TP055	39°43'49"N 003°49'06"E	
TP015	40°05'26"N 004°08'42"E		TP056	39°43'46"N 002°51'02"E	
TP016	40°04'12"N 004°04'11"E		TP057	39°43'17"N 003°04'35"E	
TP017	40°04'12"N 002°21'34"E		TP058	39°43'00"N 004°40'00"E	
TP018	40°04'10"N 003°52'05"E		TP059	39°41'57"N 002°00'32"E	
TP019	40°03'38"N 004°34'02"E		TP060	39°41'19"N 002°45'28"E	
TP020	40°03'21"N 003°51'07"E		TP061	39°40'06"N 002°37'17"E	
TP021	40°01'12"N 004°14'00"E		TP062	39°40'02"N 003°51'60"E	
TP022	40°00'47"N 002°15'21"E		TP063	39°39'49"N 004°31'52"E	
TP023	40°00'42"N 003°58'54"E		TP064	39°39'38"N 002°39'50"E	
TP024	39°58'42"N 003°48'16"E		TP065	39°38'52"N 003°07'14"E	
TP025	39°57'24"N 004°40'00"E		TP066	39°38'48"N 002°35'59"E	
TP026	39°56'55"N 002°10'18"E		TP067	39°38'28"N 002°55'17"E	
TP027	39°56'10"N 003°03'30"E		TP068	39°38'16"N 003°11'39"E	
TP028	39°55'60"N 003°47'19"E		TP069	39°37'27"N 002°44'16"E	
TP029	39°55'19"N 004°13'23"E		TP070	39°37'14"N 002°34'51"E	
TP030	39°55'16"N 004°11'41"E		TP071	39°37'11"N 002°21'49"E	
TP031	39°55'12"N 004°01'43"E		TP072	39°37'07"N 002°46'09"E	
TP032	39°55'00"N 003°12'16"E		TP073	39°36'43"N 002°41'60"E	
TP033	39°54'31"N 004°09'53"E		TP074	39°36'24"N 002°47'56"E	
TP034	39°53'18"N 004°25'49"E		TP075	39°35'52"N 003°57'27"E	
TP035	39°53'06"N 004°08'44"E		TP076	39°35'31"N 003°00'05"E	
TP036	39°52'55"N 002°51'42"E		TP077	39°35'06"N 002°40'36"E	
TP037	39°52'52"N 002°06'26"E		TP078	39°35'02"N 002°34'02"E	
TP038	39°52'17"N 003°46'48"E		TP079	39°34'39"N 002°52'04"E	
TP039	39°51'03"N 003°07'07"E		TP080	39°33'47"N 004°02'25"E	Arc 60.0 DME JOA, sentido horario, hasta TP099. Arc 60.0 DME JOA, clockwise, up to TP099.
TP040	39°51'00"N 003°02'08"E		TP081	39°33'36"N 003°01'35"E	
TP041	39°50'04"N 002°55'01"E		TP082	39°33'30"N 002°40'17"E	
TP042	39°48'24"N 002°40'25"E		TP083	39°33'28"N 003°27'01"E	
			TP084	39°33'21"N 001°27'13"E	
			TP085	39°33'16"N 004°03'41"E	
			TP086	39°32'58"N 002°33'52"E	

PUNTO POINT	COORD	OBSERVACIONES REMARKS
TP087	39°32'22"N 002°26'37"E	
TP088	39°32'01"N 002°40'57"E	
TP089	39°31'53"N 002°22'16"E	
TP090	39°31'51"N 004°10'60"E	
TP091	39°31'40"N 002°41'16"E	
TP092	39°31'04"N 002°12'41"E	
TP093	39°30'57"N 002°42'22"E	
TP094	39°30'54"N 002°25'10"E	
TP095	39°30'31"N 002°43'40"E	
TP096	39°30'30"N 002°54'55"E	
TP097	39°30'22"N 002°37'34"E	
TP098	39°28'34"N 002°43'19"E	
TP099	39°28'24"N 004°02'02"E	
TP100	39°26'43"N 002°13'39"E	
TP101	39°25'27"N 003°54'24"E	
TP102	39°24'36"N 002°44'25"E	
TP103	39°22'16"N 001°28'47"E	
TP104	39°21'44"N 002°47'12"E	
TP105	39°21'27"N 002°49'23"E	
TP106	39°20'34"N 002°17'28"E	
TP107	39°17'34"N 003°07'15"E	
TP108	39°16'56"N 003°14'56"E	
TP109	39°16'50"N 003°01'56"E	
TP110	39°15'12"N 002°06'34"E	
TP111	39°13'02"N 002°52'28"E	
TP112	39°12'44"N 002°08'48"E	
TP113	39°12'38"N 003°21'50"E	
TP114	39°11'14"N 001°33'10"E	Arco 21.0 DME IBA, sentido antihorario, hasta TP127. Arc 21.0 DME IBA, anticlockwise, up to TP127.
TP115	39°08'58"N 002°13'05"E	
TP116	39°08'42"N 001°37'15"E	
TP117	39°07'07"N 001°31'33"E	
TP118	39°05'56"N 002°53'26"E	
TP119	39°05'20"N 002°18'44"E	
TP120	39°03'54"N 001°43'47"E	
TP121	39°03'00"N 001°45'00"E	
TP122	39°02'36"N 001°18'46"E	
TP123	39°02'26"N 002°56'21"E	
TP124	39°02'06"N 002°26'02"E	
TP125	39°02'01"N 001°17'50"E	
TP126	39°00'53"N 001°19'55"E	
TP127	38°58'59"N 000°56'32"E	
TP128	38°58'22"N 001°13'52"E	
TP129	38°58'08"N 001°17'24"E	
TP130	38°57'38"N 000°55'58"E	
TP131	38°57'26"N 001°48'17"E	
TP132	38°56'10"N 001°30'33"E	

PUNTO POINT	COORD	OBSERVACIONES REMARKS
TP133	38°54'34"N 001°24'09"E	
TP134	38°52'28"N 001°48'51"E	Arco 60.0 DME JOA, sentido horario, hasta TP143. Arc 60.0 DME JOA, clockwise, up to TP143.
TP135	38°52'06"N 001°22'03"E	
TP136	38°50'58"N 000°55'09"E	
TP137	38°49'18"N 001°19'09"E	
TP138	38°48'49"N 001°48'31"E	
TP139	38°48'09"N 001°17'56"E	
TP140	38°45'59"N 001°47'40"E	Arco 21.0 DME IBA, sentido horario, hasta TP154. Arc 21.0 DME IBA, clockwise, up to TP154.
TP141	38°45'56"N 000°56'14"E	
TP142	38°43'13"N 001°41'26"E	
TP143	38°41'56"N 002°06'05"E	
TP144	38°41'07"N 000°59'01"E	
TP145	38°40'55"N 001°27'21"E	
TP146	38°40'37"N 001°35'33"E	
TP147	38°39'51"N 001°22'50"E	
TP148	38°39'51"N 001°00'12"E	
TP149	38°39'00"N 001°32'02"E	
TP150	38°38'54"N 001°34'32"E	
TP151	38°38'28"N 001°23'25"E	
TP152	38°36'30"N 001°03'17"E	
TP153	38°36'30"N 001°07'00"E	
TP154	38°31'25"N 001°17'12"E	