

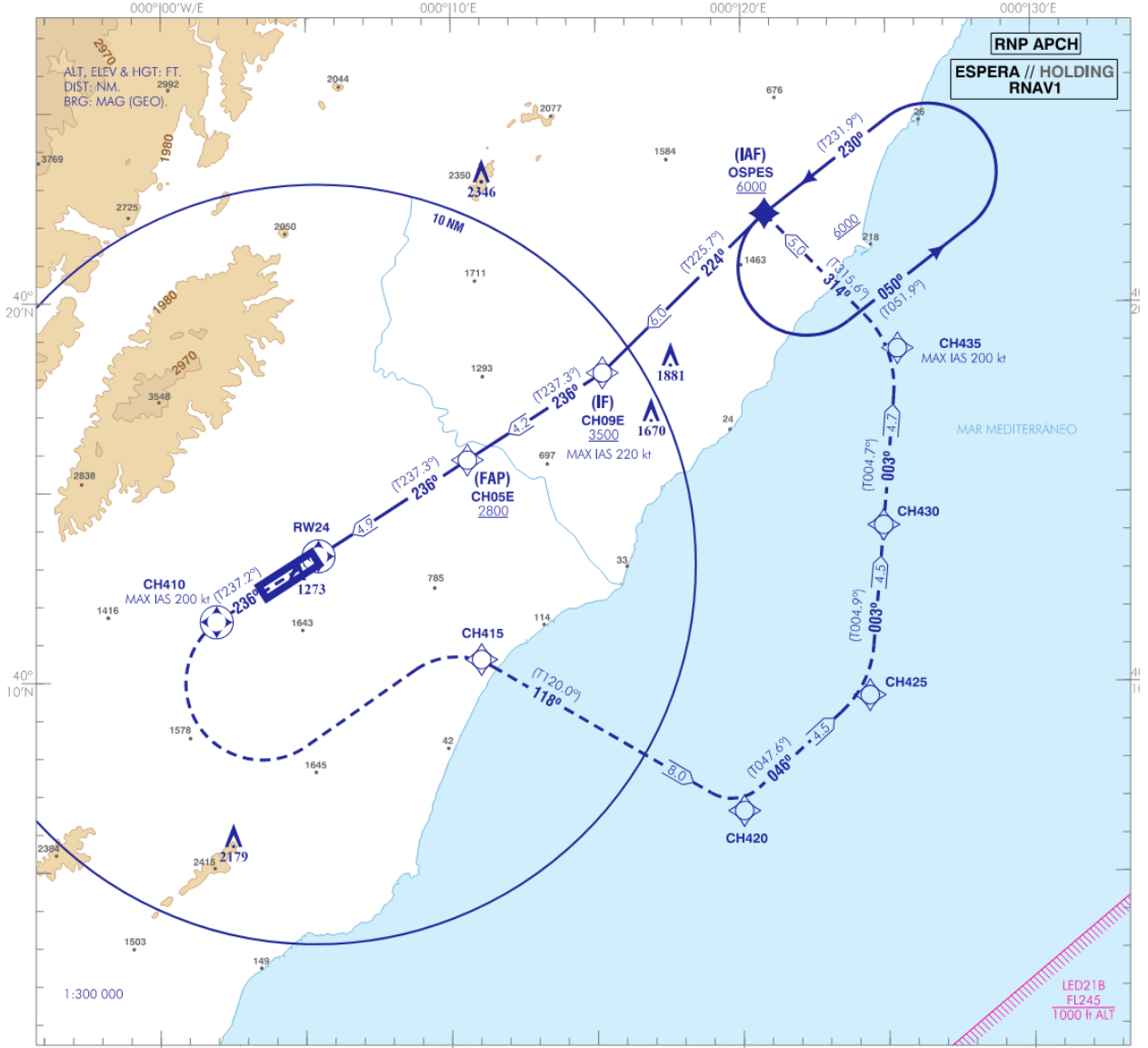
CARTA DE APROXIMACIÓN  
POR INSTRUMENTOS-OACI

EGNOS  
CH 57286  
E24A

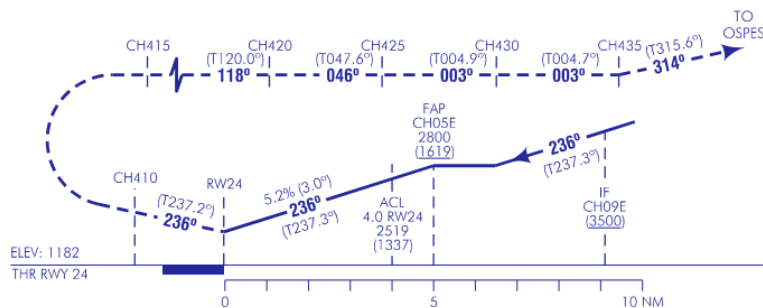
ELEV AD  
1182 ft  
VAR 2°E (2025)

APP 120.100 MHz  
TWR 120.680 C  
121.830 C

CASTELLÓN  
RNP Z  
RWY 24 (LPV ONLY)



**FRUSTRADA:** SUBIR EN CURSO MAGNÉTICO 236° DIRECTO A CH410, VIRAR A LA IZQUIERDA (IAS MAX 200 kt) DIRECTO A CH415. VIRAR A LA DERECHA A CH420. VIRAR A LA IZQUIERDA A CH425. VIRAR A LA IZQUIERDA A CH430. DIRECTO A CH435. VIRAR A LA IZQUIERDA (IAS MAX 200 kt) A OSPES PARA INTEGRARSE A LA ESPERA A 6000 O SUPERIOR.  
**MISSED APCH:** CLIMB IN MAGNETIC COURSE 236° DIRECT TO CH410, TURN LEFT (MAX IAS 200 kt) DIRECT TO CH415. TURN RIGHT TO CH420. TURN LEFT TO CH425. TURN LEFT TO CH430. TURN LEFT (MAX IAS 200 kt) TO OSPES TO JOIN THE HOLDING AT 6000 OR ABOVE.



LPV RDH 49 TA 6000

NO EN CIRCUITO  
NO CIRCLING

8300 MSA  
ARP  
25 NM

HGT REF ELEV THR RWY 24

|  |          | OCA/H | A              | B              | C              | D             |
|--|----------|-------|----------------|----------------|----------------|---------------|
| STA  | LPV 2.5% |       | 2065<br>(887)  | 2081<br>(899)  | 2089<br>(907)  | 2100<br>(918) |
|  | LPV 5.0% |       | 1489<br>(307)  | 1501<br>(319)  | 1509<br>(327)  | 1520<br>(338) |
| En circuito (H) sobre<br>Circling (H) over |          | 1182  | 2270<br>(1090) | 2290<br>(1110) | 2300<br>(1120) |               |

| GS                | kt     | 80   | 100  | 120  | 140  | 160  | 180  |
|-------------------|--------|------|------|------|------|------|------|
| FAF-THR: 4.9 NM   | mins   | 3:39 | 2:55 | 2:26 | 2:05 | 1:49 | 1:37 |
| FAF-MAPT:         | mins   |      |      |      |      |      |      |
| ROD: 5.2%         | ft/min | 425  | 531  | 637  | 743  | 849  | 955  |
| ALT/HGT RWY24 FNA |        |      |      |      |      |      |      |
| 13                | 12     | 11   | 10   | 9    | 8    | 7    | 6    |
| 5                 | 4      | 3    | 2    | 1    |      |      |      |

REIMPRESIÓN  
REPRINT:

CAMBIOS:  
CHANGES:

## REQUISITOS DE LA BASE DE DATOS AERONÁUTICA

### AERONAUTICAL DATABASE REQUIREMENTS

#### PROCEDIMIENTOS DE APROXIMACIÓN POR INSTRUMENTOS INSTRUMENT APPROACH PROCEDURES

RNP Z RWY 24 (LPV ONLY)

#### COORDENADAS WAYPOINTS WAYPOINTS COORDINATES

| WPT  | COORD                |
|--|----------------------|
| OSPES (IAF)  | 402221.2N 0002049.0E |
| CH09E (IF)   | 401809.8N 0001512.8E |
| CH05E (FAP)  | 401552.3N 0001033.4E |
| RW24 (LTP)   | 401314.5N 0000512.9E |
| CH410  | 401137.1N 0000155.4E |
| CH415  | 401037.1N 0001101.7E |
| CH420  | 400636.9N 0002002.9E |
| CH425  | 400938.9N 0002422.8E |
| CH430  | 401407.9N 0002452.8E |
| CH435  | 401847.2N 0002522.9E |
| Aproximación final de no precisión (APV SBAS) - Pendiente (Ángulo de descenso)<br>Non-precision final approach (APV SBAS) - Slope (Descent angle): | 5.24% (3.00°)        |

#### DESCRIPCIÓN TABULAR DEL PROCEDIMIENTO PROCEDURE TABULAR DESCRIPTION

| OSPES (IAF)     |                           |                                     |            |                    |                     |                |                     |               |                |                |                              |  |
|-----------------|---------------------------|-------------------------------------|------------|--------------------|---------------------|----------------|---------------------|---------------|----------------|----------------|------------------------------|--|
| Número de serie | Descriptor de trayectoria | Identificador de punto de recorrido | Sobrevuelo | Curso/Derrota (°T) | Variación magnética | Distancia (NM) | Dirección de viraje | Altitud (ft)  | Velocidad (kt) | VPA/TCH (°/ft) | Especificación de navegación |  |
| Serial number   | Path Terminator           | Waypoint identifier                 | Fly-over   | Course/Track (°T)  | Magnetic variation  | Distance (NM)  | Turn direction      | Altitude (ft) | Speed (kt)     | VPA/TCH (°/ft) | Navigation specification     |  |
| 001             | IF                        | OSPES                               | —          | —                  | -1.5                | —              | —                   | +6000         | —              | —              | RNP APCH                     |  |
| 002             | TF                        | CH09E                               | —          | 224 (225.7)        | -1.5                | 6.0            | —                   | +3500         | -220           | —              | RNP APCH                     |  |
| 003             | TF                        | CH05E                               | —          | 236 (237.3)        | -1.5                | 4.2            | —                   | +2800         | —              | —              | RNP APCH                     |  |
| 004             | TF                        | RW24                                | Y          | 236 (237.3)        | -1.5                | 4.9            | —                   | +1231         | —              | 3.0/49         | RNP APCH                     |  |
| 005             | CF                        | CH410                               | Y          | 236 (237.2)        | -1.5                | —              | —                   | —             | -200           | —              | RNP APCH                     |  |
| 006             | DF                        | CH415                               | —          | —                  | -1.5                | —              | L                   | —             | —              | —              | RNP APCH                     |  |
| 007             | TF                        | CH420                               | —          | 118 (120.0)        | -1.5                | 8.0            | R                   | —             | —              | —              | RNP APCH                     |  |
| 008             | TF                        | CH425                               | —          | 046 (047.6)        | -1.5                | 4.5            | —                   | —             | —              | —              | RNP APCH                     |  |
| 009             | TF                        | CH430                               | —          | 003 (004.9)        | -1.5                | 4.5            | —                   | —             | —              | —              | RNP APCH                     |  |
| 010             | TF                        | CH435                               | —          | 003 (004.7)        | -1.5                | 4.7            | —                   | —             | -200           | —              | RNP APCH                     |  |
| 011             | TF                        | OSPES                               | —          | 314 (315.6)        | -1.5                | 5.0            | —                   | +6000         | —              | —              | RNP APCH                     |  |

#### CIRCUITOS DE ESPERA HOLDING PATTERN

| Descriptor de trayectoria | de | Identificador de punto de recorrido | Sobrevuelo | Curso/Derrota (°T) | Variación magnética | Distancia/Tiempo de alejamiento | de | Dirección de viraje | de | Altitud MNM (ft)  | Altitud MAX (ft)  | Velocidad (kt) | Especificación de navegación |
|---------------------------|----|-------------------------------------|------------|--------------------|---------------------|---------------------------------|----|---------------------|----|-------------------|-------------------|----------------|------------------------------|
| Path terminator           |    | Waypoint identifier                 | Fly-over   | Course/Track (°T)  | Magnetic variation  | Distance/Outbound time          |    | Turn direction      |    | MNM altitude (ft) | MAX altitude (ft) | Speed (kt)     | Navigation specification     |
| HM                        |    | OSPES                               | —          | 230 (231.9)        | -1.5                | 1 min                           |    | L                   |    | +6000             | —                 | —              | RNAV 1                       |

**SBAS LPV FAS DATA BLOCK**

| FAS DATA BLOCK  |  |                   |
|---|--|-------------------|
| 1   | OPERATION MODE                                 | 00                |
| 2   | SERVICE PROVIDER IDENTIFIER                    | 01*               |
| 3   | AIRPORT IDENTIFIER                             | LECH              |
| 4   | RUNWAY   | 24                |
| 5   | APPROACH PERFORMANCE DESIGNATOR                | 0**               |
| 6   | ROUTE INDICATOR                                | Z                 |
| 7   | REFERENCE PATH DATA SELECTOR (RPDS)            | 00                |
| 8   | REFERENCE PATH IDENTIFIER                      | E24A***           |
| 9   | LANDING THRESHOLD POINT (LTP) – LATITUDE       | 401314.5100N      |
| 10  | LANDING THRESHOLD POINT (LTP) – LONGITUDE      | 0000512.8900E     |
| 11  | LTP HEIGHT ABOVE ELLIPSOID (HAE)               | +04107 (410.7 m)  |
| 12  | FLIGHT PATH ALIGNMENT POINT (FPAP) – LATITUDE  | 401227.1400N      |
| 13  | FLIGHT PATH ALIGNMENT POINT (FPAP) – LONGITUDE | 0000336.8700E     |
| 14  | THRESHOLD CROSSING HEIGHT (TCH)                | 0015.00           |
| 15  | TCH UNIT SELECTOR                              | M                 |
| 16  | GLIDE PATH ANGLE                               | 03.00             |
| 17  | COURSE WIDTH AT THRESHOLD                      | 105.00            |
| 18  | LENGTH OFFSET                                  | 0000              |
| 19  | HORIZONTAL ALERT LIMIT (HAL)                   | 40                |
| 20  | VERTICAL ALERT LIMIT (VAL)                     | 50                |
| 21  | PRECISION APPROACH PATH POINT CRC REMAINDER    | 7BEDD76A          |
| NON - FAS DATA BLOCK  |  |                   |
| 22  | ICAO CODE                                      | LE                |
| 23  | LTP ORTHOMETRIC HEIGHT                         | +03602 (0360.2 m) |
| <p>NOTAS:</p> <p>*: Este valor "01" identifica a EGNOS como proveedor de servicio.</p> <p>** : LPV.</p> <p>***: "E" se refiere a EGNOS.</p> |  |                   |
| <p>NOTES:</p> <p>*:This value "01" identifies EGNOS as service provider.</p> <p>** : LPV.</p> <p>***:"E" refers to EGNOS.</p>               |  |                   |