

CARTA DE LLEGADA NORMALIZADA  
VUELO POR INSTRUMENTOS (STAR)-OACI

TA 7000 ft  
VAR 0° (2020)

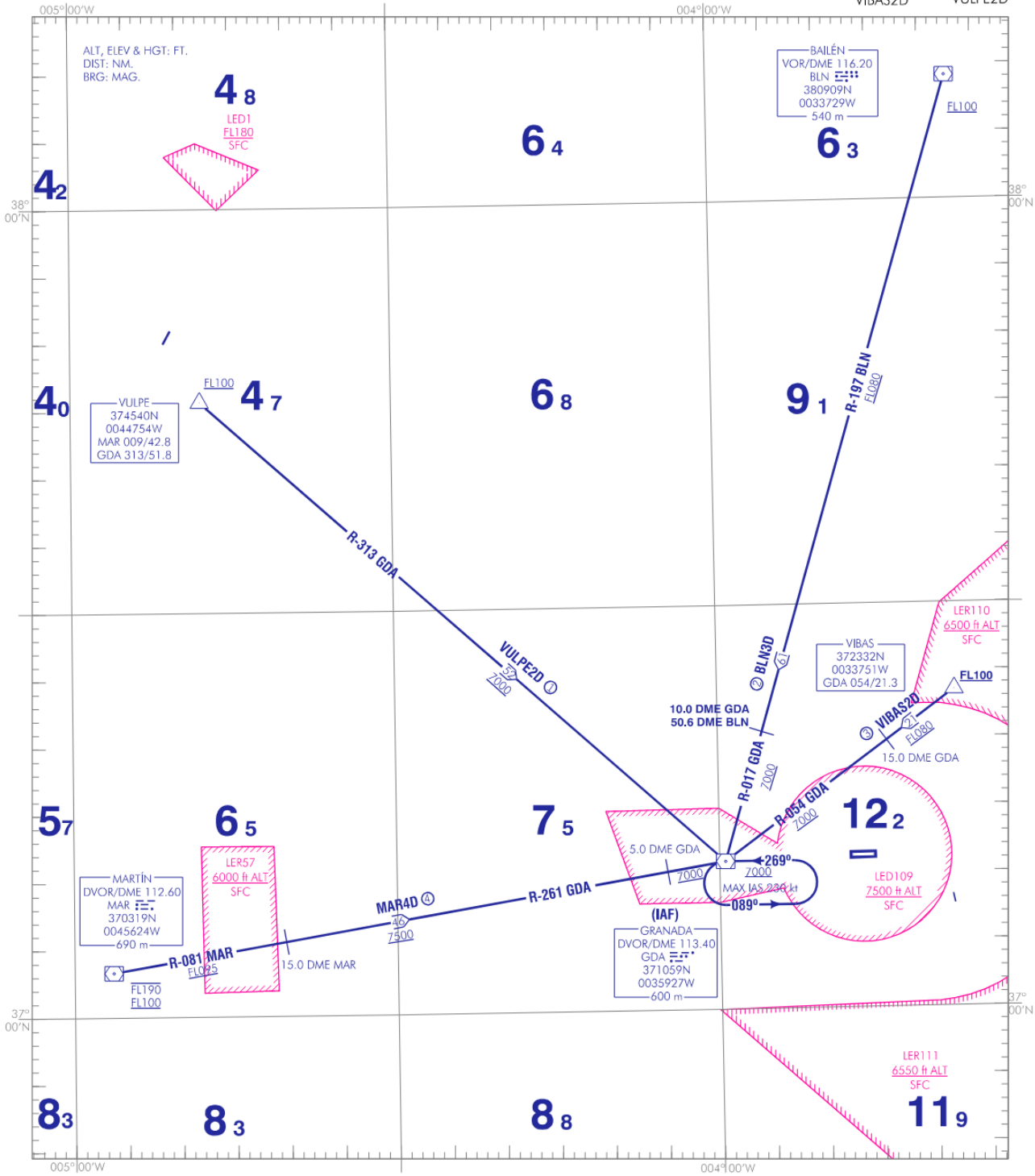
APP 118.855 C  
TWR 118.855 C

GRANADA/Federico García Lorca  
Granada - Jaén

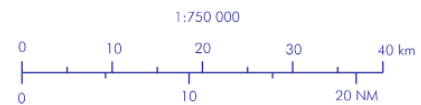
RWY 09/27

BLN3D  
VIBAS2D

MAR4D  
VULPE2D



NOTAS:  
 ① A 7000 R-313 GDA NO HAY COBERTURA DME HASTA 40.0 DME GDA.  
 ② DESDE 8.0 DME A 6.0 DME R-017 GDA POSIBLES FLUCTUACIONES.  
 ③ A 7000 R-054 GDA POSIBLES FLUCTUACIONES A 8.0 DME GDA.  
 ④ A 7000 R-261 GDA POSIBLES FLUCTUACIONES A 10.0 DME GDA.  
 NOTAS:  
 ① NO DME COVERAGE AT 7000 R-313 GDA UP TO 40.0 DME GDA.  
 ② POSSIBLE FLUCTUATIONS FROM 8.0 DME TO 6.0 DME R-017 GDA.  
 ③ AT 7000 R-054 GDA POSSIBLE FLUCTUATIONS AT 8.0 DME GDA.  
 ④ AT 7000 R-261 GDA POSSIBLE FLUCTUATIONS AT 10.0 DME GDA.



NEW CHART

CHANGES:

---

**STANDARD INSTRUMENT ARRIVALS (STAR)**  
**RUNWAY 09/27**

**BAILÉN THREE DELTA ARRIVAL (BLN3D)**  
VOR/DME BLN, DVOR/DME GDA (IAF).

**MARTÍN FOUR DELTA ARRIVAL (MAR4D)**  
DVOR/DME MAR, R-081 MAR/ 15.0 DME MAR, R-261 GDA/ 5.0 DME GDA, DVOR/DME GDA (IAF).

**VIBAS TWO DELTA ARRIVAL (VIBAS2D)**  
VIBAS, DVOR/DME GDA (IAF).

**VULPE TWO DELTA ARRIVAL (VULPE2D)**  
VULPE, DVOR/DME GDA (IAF).