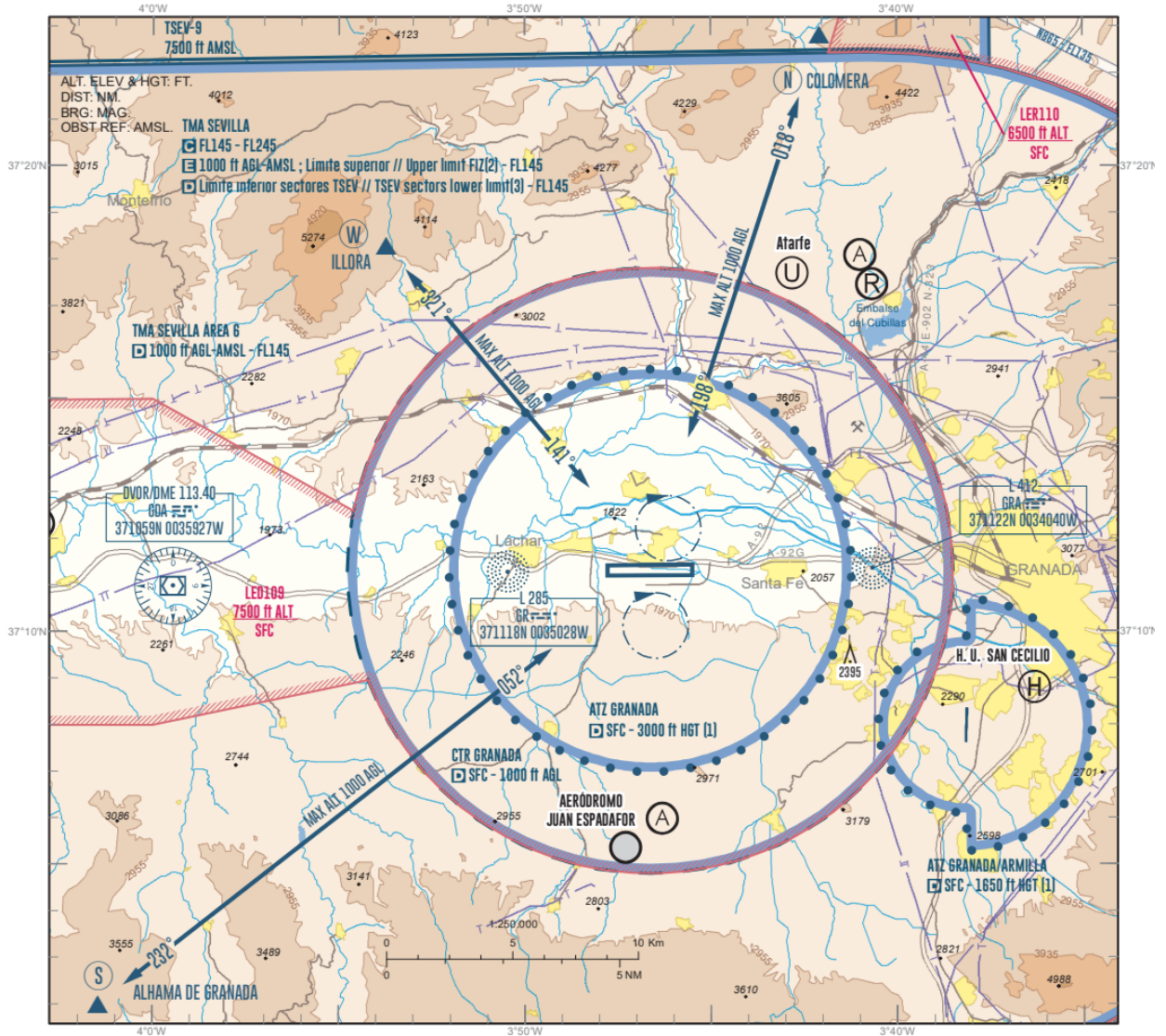


CARTA DE APROXIMACIÓN ELEV AD
VISUAL / VAC - OACI 1860
VAR 0° (2020)

APP	118.855 C
TWR	118.855 C
GMC	121.930 C
ATIS	120.630 C

GRANADA/Federico García Lorca. Granada-Jaén
LEGR



NEW CHART

CHANGES:

NOTES

- (1) Or up to the cloud ceiling, whichever is lower.
- (2) Outside the lateral limits of TSEV sectors.
- (3) Within the lateral limits of TSEV sectors.

ARRIVALS

VFR aircraft bound for Granada AD shall establish radio contact with TWR over the points N, S, W, and request clearance to enter the inbound VFR routes, maintaining a maximum of 300 m (1000 ft) AGL.

Before entering the CTR, pilots will contact TWR to report position and altitude, and request landing instructions.

When so instructed by TWR, pilots shall hold at the aforementioned points before being cleared to enter the CTR.

COMMUNICATIONS FAILURE

In case of communications failure, VFR aircraft shall use N, S, W routes maintaining 300 m (1000 ft) AGL or below, holding at North or South of TWR and shall wait for light signals avoiding any possible traffic in the aerodrome traffic circuit.

REMARKS

- Prohibited to aircraft without radiocommunication.
- PAPI (MEHT)
 - RWY 09: 3° (INFO NO AVBL) (1).
 - RWY 27: 3° (INFO NO AVBL) (1).
- (1) PAPI not available for code letter E ACFT.
- The arrival and the communication failure procedures will be carried out without crossing the runways.
- For information purposes, the geographic coordinates of the points are included:
 - N: 372250N 0034205W
 - W: 371818N 0035344W
 - S: 370200N 0040128W