

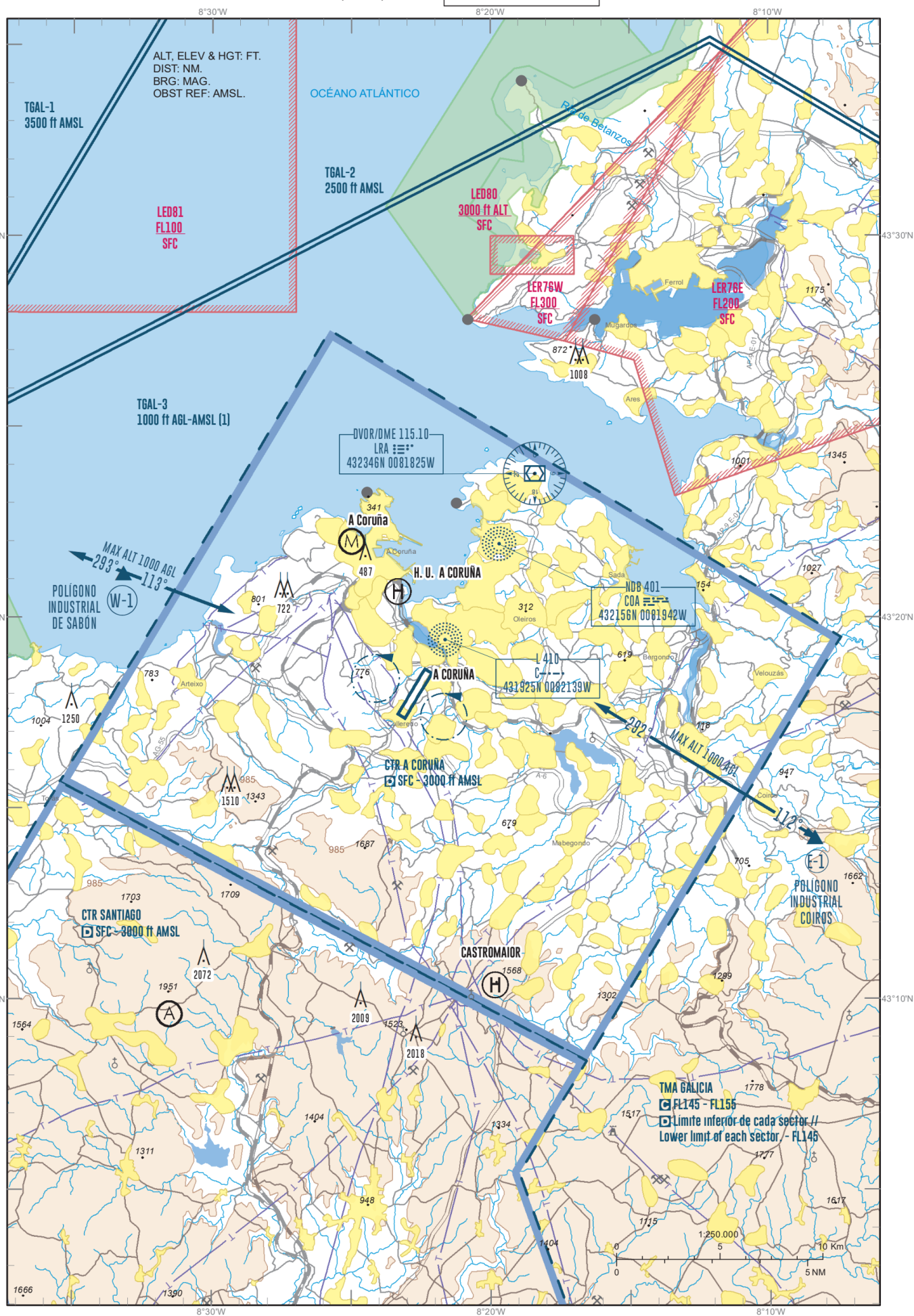
CARTA DE APROXIMACIÓN
VISUAL / VAC - OACI

ELEV AD
330 ft
VAR 1°W (2025)

TWR	118.305 C
GMC	121.705 C
ATIS	129.005 C

A CORUÑA
LECO

CAMBIO: DECLINACIÓN MAGNÉTICA. RUMBOS.
CHANGES: MAGNETIC VARIATION. HEADINGS.



NOTAS

- The runway centre line and its extension shall never be crossed without APP or TWR permission.
 - Take extreme care when entering or leaving the CTR to the West, because of possible IFR traffic in the zone when RWY 03 is in use.
 - Caution: Do not exceed TMA lower limit without clearance. Instrumental traffic may be approaching RWY 21 in the vicinity of LER76W/E, north of Betanzos estuary.
- (1) Or CTR LEST or LECO upper limit.

ARRIVALS

VFR aircraft bound for A Coruña AD will establish radio contact with TWR, before entering the CTR, request clearance, maintain 1000 ft AGL maximum and report position over the VFR reporting points: E-1 (Polígono Industrial Coiros) or W-1 (Polígono Industrial de Sabón).

DEPARTURES

VFR aircraft leaving the CTR shall request TWR clearance to perform the VFR departure procedure to be used.

COMMUNICATIONS FAILURE

VFR aircraft with communications failure must enter the CTR via the stated routes maintaining 1000 ft AGL or below. Aircraft must keep clear of aerodrome circuit traffic and hold to the NW or SE of the AD, in sight of TWR, to await light signals.

REMARKS

PAPI (MEHT):

- RWY 03: 3.42° (54 ft).
- RWY 21: 3° (54 ft).

For information purposes, the geographic coordinates of the points are included:

- E-1: 431414N 0080823W
- W-1: 432110N 0083311W