

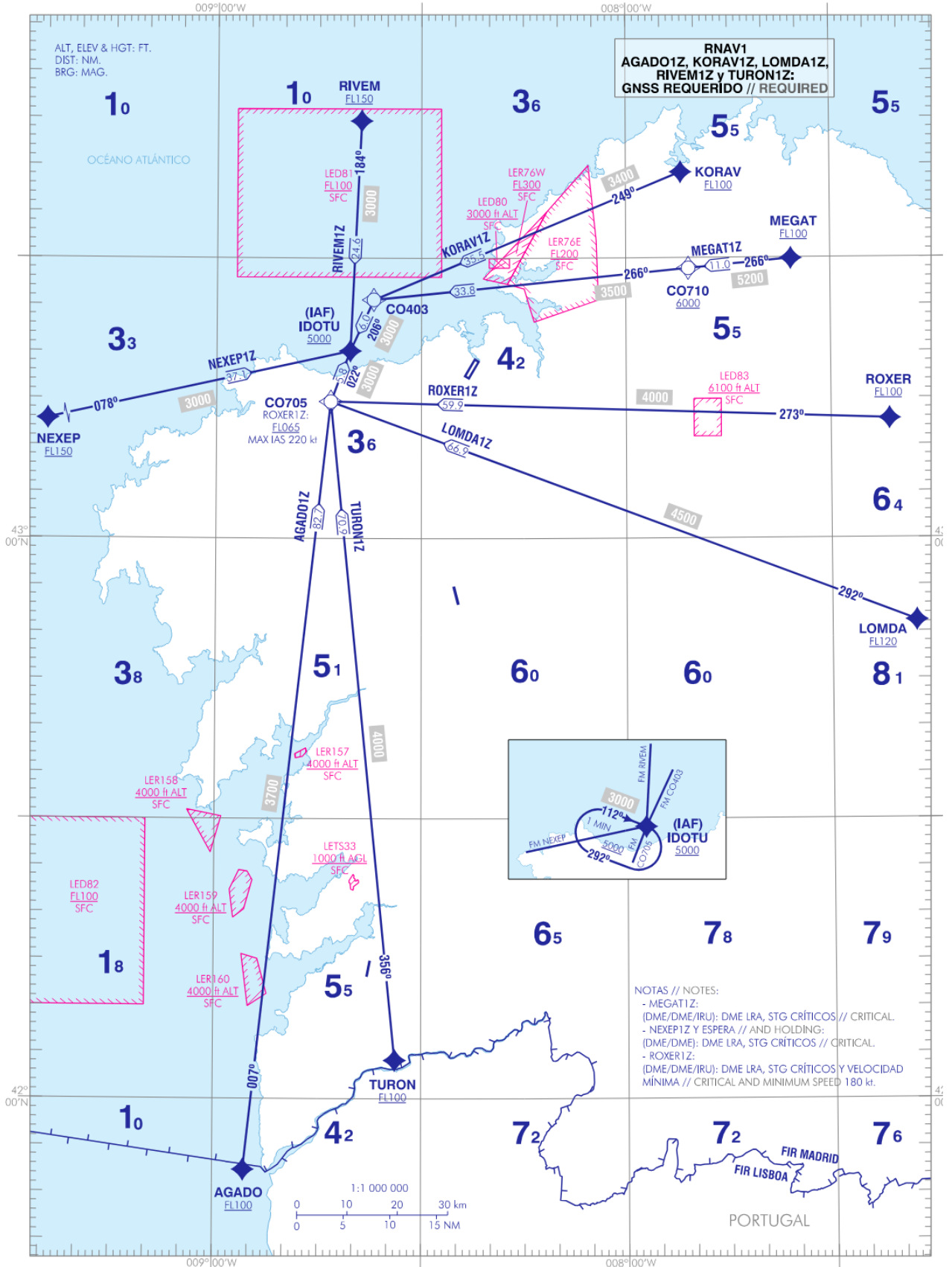
A CORUÑA
RNAV RWY 03

CARTA DE LLEGADA NORMALIZADA
VUELO POR INSTRUMENTOS (STAR)-OACI

TA 6000 ft
VAR 1°W (2025)

APP 120.200 MHz
TWR 118.305 C

AGADO1Z KORAV1Z LOMDA1Z
MEGAT1Z NEXEP1Z RIVEM1Z
ROXER1Z TURON1Z



REPRINTING

CHANGES:

WAYPOINTS COORDINATES

WPT	COORD
AGADO	415222.4N 0085536.1W
CO403	432529.8N 0083659.8W
CO705	431437.0N 0084317.0W
CO710	432853.6N 0075049.9W
IDOTU	432002.7N 0084026.6W
KORAV	433911.2N 0075156.1W
LOMDA	425110.1N 0071745.7W
MEGAT	432955.9N 0073547.3W
NEXEP	431156.0N 0092959.3W
RIVEM	434439.6N 0083849.5W
ROXER	431246.8N 0072127.2W
TURON	420404.5N 0083348.3W

STANDARD INSTRUMENT ARRIVALS (STAR)
RUNWAY 03

NOTE APPLICABLE TO ALL STAR:

- RNAV1

PROCEDURE TABULAR DESCRIPTION

AGADO1Z											
Serial number	Path Terminator	Waypoint identifier	Fly-over	Course/Track °M (°T)	Magnetic variation	Distance (NM)	Turn direction	Altitude (ft)	Speed (kt)	VPA/TCH (°/ft)	Navigation specification
001	IF	AGADO	-	-	+1.2	-	-	+FL100	-	-	RNAV1
002	TF	CO705	-	007 (006.2)	+1.2	82.7	-	-	-	-	RNAV1
003	TF	IDOTU	-	022 (020.9)	+1.2	5.8	-	+5000	-	-	RNAV1

KORAV1Z											
Subject to LED81 activity.											
Serial number	Path Terminator	Waypoint identifier	Fly-over	Course/Track °M (°T)	Magnetic variation	Distance (NM)	Turn direction	Altitude (ft)	Speed (kt)	VPA/TCH (°/ft)	Navigation specification
001	IF	KORAV	-	-	+1.2	-	-	+FL100	-	-	RNAV1
002	TF	CO403	-	249 (247.6)	+1.2	35.5	-	-	-	-	RNAV1
003	TF	IDOTU	-	206 (204.8)	+1.2	6.0	-	+5000	-	-	RNAV1

LOMDA1Z											
Serial number	Path Terminator	Waypoint identifier	Fly-over	Course/Track °M (°T)	Magnetic variation	Distance (NM)	Turn direction	Altitude (ft)	Speed (kt)	VPA/TCH (°/ft)	Navigation specification
001	IF	LOMDA	-	-	+1.2	-	-	+FL120	-	-	RNAV1
002	TF	CO705	-	292 (291.0)	+1.2	66.9	-	-	-	-	RNAV1
003	TF	IDOTU	-	022 (020.9)	+1.2	5.8	-	+5000	-	-	RNAV1

MEGAT1Z

Serial number	Path Terminator	Waypoint identifier	Fly-over	Course/Track °M (°T)	Magnetic variation	Distance (NM)	Turn direction	Altitude (ft)	Speed (kt)	VPA/TCH (°/ft)	Navigation specification
001	IF	MEGAT	-	-	+1.2	-	-	+FL100	-	-	RNAV1
002	TF	CO710	-	266 (264.7)	+1.2	11.0	-	+6000	-	-	RNAV1
003	TF	CO403	-	266 (264.5)	+1.2	33.8	-	-	-	-	RNAV1
004	TF	IDOTU	-	206 (204.8)	+1.2	6.0	-	+5000	-	-	RNAV1

NEXEP1Z

Serial number	Path Terminator	Waypoint identifier	Fly-over	Course/Track °M (°T)	Magnetic variation	Distance (NM)	Turn direction	Altitude (ft)	Speed (kt)	VPA/TCH (°/ft)	Navigation specification
001	IF	NEXEP	-	-	+1.2	-	-	+FL150	-	-	RNAV1
002	TF	IDOTU	-	078 (077.1)	+1.2	37.1	-	+5000	-	-	RNAV1

RIVEM1Z

Subject to LED81 activity.

Serial number	Path Terminator	Waypoint identifier	Fly-over	Course/Track °M (°T)	Magnetic variation	Distance (NM)	Turn direction	Altitude (ft)	Speed (kt)	VPA/TCH (°/ft)	Navigation specification
001	IF	RIVEM	-	-	+1.2	-	-	+FL150	-	-	RNAV1
002	TF	IDOTU	-	184 (182.7)	+1.2	24.6	-	+5000	-	-	RNAV1

ROXER1Z

Serial number	Path Terminator	Waypoint identifier	Fly-over	Course/Track °M (°T)	Magnetic variation	Distance (NM)	Turn direction	Altitude (ft)	Speed (kt)	VPA/TCH (°/ft)	Navigation specification
001	IF	ROXER	-	-	+1.2	-	-	+FL100	-	-	RNAV1
002	TF	CO705	-	273 (272.2)	+1.2	59.9	-	+FL065	-220	-	RNAV1
005	TF	IDOTU	-	022 (020.9)	+1.2	5.8	-	+5000	-	-	RNAV1

TURON1Z

Serial number	Path Terminator	Waypoint identifier	Fly-over	Course/Track °M (°T)	Magnetic variation	Distance (NM)	Turn direction	Altitude (ft)	Speed (kt)	VPA/TCH (°/ft)	Navigation specification
001	IF	TURON	-	-	+1.2	-	-	+FL100	-	-	RNAV1
002	TF	CO705	-	356 (354.4)	+1.2	70.9	-	-	-	-	RNAV1
005	TF	IDOTU	-	022 (020.9)	+1.2	5.8	-	+5000	-	-	RNAV1

HOLDING PATTERN

Path terminator	Waypoint identifier	Fly-over	Course/Track °M (°T)	Magnetic variation	Distance/ Outbound time	Turn direction	MNM altitude (ft)	MAX altitude (ft)	Speed (kt)	Navigation specification
HM	IDOTU	-	112 (110.7)	+1.2	4.6 NM	R	5000	-	-	RNAV1