

## LEGT AD 2 AERODROME DATA

## LEGT AD 2.1 AERODROME LOCATION INDICATOR AND NAME

LEGT - MADRID/Getafe

## LEGT AD 2.2 AERODROME GEOGRAPHICAL AND ADMINISTRATIVE DATA

1	ARP	401739N 0034325W. See AD 2-LEGT ADC.
2	Distance and direction from the city	15 km SW.
3	Elevation	619 m / 2032 ft.
4	Geoid undulation	51 m ± 0.05 m (1).
5	Reference temperature	33°C.
6	Low average temperature	6°C.
7	Magnetic variation	1° E (2025).
8	Annual change	9.5' E.
9	AD administration	Ejército del Aire y del Espacio.
10	Address	Base Aérea de Getafe, Avd. John Lennon, s/n. 28071 Getafe (Madrid).
11	TEL / FAX	+34-917 798 200 / +34-917 798 610
12	AFTN	LEGT
13	E-mail	<a href="mailto:prepvuelos_getafe@mde.es">prepvuelos_getafe@mde.es</a>
14	Approved traffic	IFR/VFR. MIL: Exceptionally used by civil aircraft with express prior clearance from the military ATC authority.
15	Remarks	(1) For all AD points.

## LEGT AD 2.3 OPERATIONAL HOURS

1	Airport	V: 0530-1900; I: 0630-2000; Other hours according to needs of Unit (1).
2	Customs and Immigration	No.
3	Health and Sanitation	No.
4	AIS/ARO/OPV	HR AD.
5	MET briefing	0600-1800. Other hours according to needs of Unit. MAX 2300.
6	ATS	HR AD.
7	Fuelling	MIL: HR AD.
8	Handling	HR AD.
9	Security	H24.
10	De-icing	No.

11	Remarks	(1) Foreign State aircraft: see item 20.
----	---------	--

**LEGT AD 2.4 HANDLING SERVICES AND FACILITIES**

1	Cargo facilities	Forklift truck up to 8 TM and pallet transfer system up to 13.5 TM.
2	Fuel types	F-34.
3	Oil types	O-113, O-117, O-123, O-125, O-142, O-147, O-148, O-153, O-156, O-157, O-158, O-190, O-216, O-226, O-228, O-237, O-283, O-1177, O-1178, O-1236.
4	Refuelling capacity	Trucks: 20000 L; 16.66 L/s.
5	De-icing facilities	No.
6	Hangar space	No.
7	Repair facilities	No.
8	Remarks	MIL: GPU: Unit of AC (up to 100 KVA) and DC (up to 2500 A).

**LEGT AD 2.5 PASSENGER FACILITIES**

1	Hotels	MIL: Yes.
2	Restaurant	MIL: Yes.
3	Transportation	CIV: Buses and taxis. MIL: Buses and light vehicles available on request.
4	Medical facilities	First aid and ambulance.
5	Bank/Post Office	Cash dispenser / No.
6	Tourist information	No.
7	Remarks	None.

**LEGT AD 2.6 RESCUE AND FIREFIGHTING SERVICES**

1	Fire category	5 (1).
2	Rescue equipment	MIL: In accordance with the fire category published.
3	Removal of disabled aircraft	No (2).
4	Remarks	(1) Upgradeable to CAT 7 upon PPR request at least 48 HR in advance. Upgradeable to CAT 8 only for Airbus DS cleared aircraft, upon PPR request at least 48 HR in advance. (2) Availability in MAESMA MADRID of crane up to 10000 Kg, at the request of the CITAM.

**LEGT AD 2.7 RUNWAY SURFACE CONDITION ASSESSMENT AND REPORTING, AND SNOW PLAN**

1	Equipment	No.
2	Priority	No.

3	Remarks	None.
---	---------	-------

### LEGT AD 2.8 APRONS, TAXIWAYS AND CHECK LOCATIONS/POSITIONS DATA

1	Apron	Surface: Concrete. Strength: P1 PCN 39/R/C/W/T EXC first 260 m from Eastern limit: PCN 57/R/C/W/T. P2 PCN 66/R/C/W/T EXC first 200 m from Southern limit: PCN 41/R/C/W/T. P3 PCN 49/R/C/W/T.
2	Taxiways	Width: 25 m, except CA5: 23 m + 3.5 m flexible pavement edge. Surface: Asphalt. Strength: TA: PCN 87/F/C/W/T, CA1: PCN 63/F/C/W/T, CA2: PCN 78/F/C/W/T, CA3: PCN 33/R/B/W/T, CA4: PCN 121/F/C/W/T, CA5: PCN 65/R/C/X/U.
3	Check locations	Altimeter: THR 04: 619 m / 2032 ft. THR 22: 611 m / 2004 ft. VOR: No. INS: No.
4	Remarks	None.

### LEGT AD 2.9 SURFACE MOVEMENT GUIDANCE AND CONTROL SYSTEM AND MARKINGS

1	Taxiing guidance system	NO ENTRY boards, runway-holding position.
2	RWY markings	Designators, threshold, centre line, side stripe, touchdown zone and fixed distance.
3	TWY markings	Centre line.
4	Remarks	None.

### LEGT AD 2.10 AERODROME OBSTACLES

In approach and take-off areas			In circling area and at AD	
RWY Area	Obstruction	Coordinates	Obstruction	Coordinates
22 APCH / 04 TKOF	Building 645 m/2116 ft	401751N 0034244W	Antenna 664 m/2179 ft	401821N 0034325W
	Hill 670 m/2198 ft LGTD	401835N 0034103W	Chimenea 629 m/2064 ft	401756N 0034205W
	Antenna 627 m/2057 ft LGTD	401825N 0034311W		
04 APCH / 22 TKOF	Meseta 683 m/2241 ft	401450N 0034501W		
	Chimney 649 m/2129 ft	401614N 0034517W		
	Building 659 m/2162 ft	401437N 0034706W		

Remarks: See AD 2-LEGT AOC.

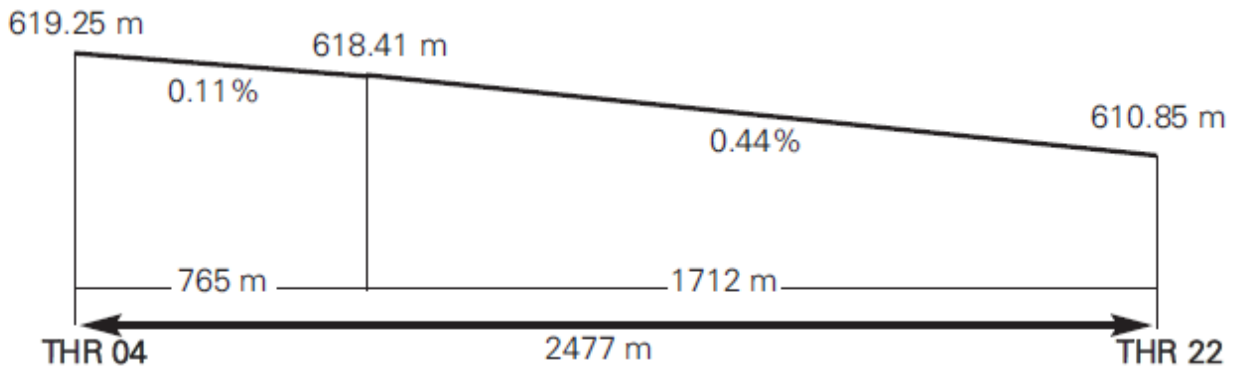
### LEGT AD 2.11 METEOROLOGICAL INFORMATION PROVIDED

1	MET office	CIV: Madrid/Getafe OMD. MIL: Getafe OMD.
2	HR	0600-1800. Other hours according to needs of Unit. Max 2300.
3	METAR	Half-hourly.
4	TAF	24 HR.
5	TREND	No.
6	Briefing	In person and by telephone.
7	Flight documentation / Language	Charts and plain language/Spanish.
8	Charts	Significant forecast and wind and temperature in altitude maps.
9	Supplementary equipment	Cloud image display.
10	ATS unit served	TWR, OPV.
11	Additional information	Madrid OMAe (LEMC): H24 <ul style="list-style-type: none"> <li>TEL: +34-915 045 807</li> </ul> MADRID/Getafe MET office <ul style="list-style-type: none"> <li>TEL: +34-917 798 280</li> </ul>
12	Remarks	Aerodrome climatological summary available. Aerodrome warnings available.

### LEGT AD 2.12 RUNWAY PHYSICAL CHARACTERISTICS

RWY	Direction	Dimensions (m)	THR PSN	THR ELEV/TDZ	SWY (m)	CWY (m)	Strip (m)	OFZ	RESA (m)	RWY/SWY SFC PCN
04	045.19° GEO / 045° MAG	2477 x 60	401710.34N 0034402.64W	THR: 619.3 m / 2032 ft TDZ: 619.3 m / 2032 ft	150 x 60	150 x 60	2490 x 74	No	No	RWY: ASPH PCN 70 R/B/W/T (1); PCN 71 R/C/W/T (2); PCN 73 R/C/W/T (3); PCN 93 R/B/W/T (4); PCN 66 R/B/W/T (5) SWY: INFO NO AVBL
22	225.20° GEO / 225° MAG	2477 x 60	401806.93N 0034248.23W	THR: 611 m / 2004 ft TDZ: No	125 x 60	375 x 60	2490 x 74	No	No	RWY: ASPH PCN 70 R/B/W/T (1); PCN 71 R/C/W/T (2); PCN 73 R/C/W/T (3); PCN 93 R/B/W/T (4); PCN 66 R/B/W/T (5) SWY: INFO NO AVBL
Remarks	(1) RWY 04: 0 m - 500 m; RWY 22: 2040 m - 2477 m. (2) RWY 04: 500 m - 1060 m; RWY 22: 1480 m - 2040 m. (3) RWY 04: 1060 m - 1700 m; RWY 22: 840 m - 1480 m. (4) RWY 04: 1700 m - 2160 m; RWY 22: 380 m - 840 m. (5) RWY 04: 2160 m - 2477 m; RWY 22: 0 m - 380 m.									

### PROFILE



### LEGT AD 2.13 DECLARED DISTANCES

RWY	TORA (m)	TODA (m)	ASDA (m)	LDA (m)
04	2477	2627	2627	2477
22	2477	2852	2602	2477
04 INT CA3	1567	1717	1717	-
22 INT CA2	1770	2145	1895	-
Remarks	None.			

### LEGT AD 2.14 APPROACH AND RUNWAY LIGHTING

1	Runway	04
2	Approach	Precision CAT I 540 m. (1) Threshold identification lights.
3	PAPI (MEHT)	3° (20.59 m / 68 ft).
4	Threshold	Green.
5	Touchdown zone	No.
6	Runway centre line	Yes.
7	Runway edge	2477 m white. (1) Distance between lights: 60 m.
8	Runway end	Red.
9	Stopway	No.
10	Remarks	(1) Adjustable light intensity.

1	Runway	22
2	Approach	Simple, 420 m. (1) Threshold identification lights.
3	PAPI (MEHT)	3° (19.70 m / 65 ft).
4	Threshold	Green.
5	Touchdown zone	No.

6	Runway centre line	Yes.
7	Runway edge	2477 m white. (1) Distance between lights: 60 m.
8	Runway end	Red.
9	Stopway	No.
10	Remarks	(1) Adjustable light intensity.

## LEGT AD 2.15 OTHER LIGHTING, SECONDARY POWER SUPPLY

1	ABN/IBN	No.
2	WDI	1 near TWR, 1 near THR 04. Not LGTD.
3	TWY lighting	Edge, EXC: CA5.
4	Apron lighting	No.
5	Secondary power supply	Engine generator that provides a switch-over time of 20 seconds.
6	Remarks	None.

## LEGT AD 2.16 HELICOPTER ALIGHTING AREA

1	Position	To SE of TWR (Private EADS - C.A.S.A factory).
2	Elevation	No.
3	Dimensions, surface, maximum weight, marking	No.
4	Direction	No.
5	Declared distances	No.
6	Lighting	No.
7	Remarks	None.

## LEGT AD 2.17 AIR TRAFFIC SERVICES AIRSPACE

1	Designation	CTR MADRID.
2	Lateral limits	403301.53N 0034658.39W; arc centred on DVOR/DME BRA (402808.9N 0033327.1W), radius 11.4 NM; 402158.81N 0032053.71W; 401544.73N 0031457.24W; 400611.28N 0032929.16W; 401222.89N 0033746.85W; 400809.08N 0034614.61W; 401320.10N 0035258.35W; 401642.37N 0034856.17W; arc centred on MADRID/Getafe AD (401738.6N 0034325.4W), radius 8.0 km; 402038.71N 0034729.48W; arc centred on MADRID/Cuatro Vientos AD (402214.4N 0034706.5W), radius 3.0 km; 402146.76N 0034504.54W; arc centred on MADRID/Getafe AD (401738.6N 0034325.4W), radius 8.0 km; 402154.86N 0034232.04W; 402308.24N 0034112.60W; 403301.53N 0034658.39W.
3	Vertical limits	SFC-1000 ft AGL.
4	Airspace class	D (1).

5	Unit Language	MADRID APP. ES/EN.
6	Transition altitude	3962 m / 13000 ft.
7	Hours of applicability	-
8	Remarks	(1) Visual flights only allowed to Spanish military aircraft from/to Ministerio de Defensa facilities.

1	Designation	ATZ MADRID/GETAFE
2	Lateral limits	Circle radius 8 km centred on ARP (2).
3	Vertical limits	SFC-3000 ft AGL (3).
4	Airspace class	D.
5	Unit Language	GETAFE TWR. ES/EN.
6	Transition altitude	-
7	Hours of applicability	-
8	Remarks	(2) Or the ground visibility, whichever is lower. (3) Or up to the cloud ceiling, whichever is lower.

### LEGT AD 2.18 AIR TRAFFIC SERVICES COMMUNICATION FACILITIES

Service	Call sign	FREQ	HR	Remarks
APP	Madrid APP	127.100 MHz	H24	INITIAL
		119.950 MHz	HR AD	MIL
		124.230	C H24	DEP W
TWR	Getafe TWR	121.500 MHz	HR AD	EMERG
		121.605	C HR AD	GMC
		129.930	C HR AD	LOCAL MIL
		139.305	C HR AD	MIL
		243.000 MHz	HR AD	EMERG
		257.800 MHz	HR AD	MIL
		342.650 MHz	HR AD	LOCAL MIL

### LEGT AD 2.19 RADIO NAVIGATION AND LANDING AIDS

Facility (VAR)	ID	FREQ	HR	Coordinates	ELEV/DME	Remarks
DVOR/TACAN (1°E)	VGE	112.050 MHz CH 57Y	H24	401723.4N 0034334.2W	630 m	-
NDB (0°E)	GE	421.000 kHz	H24	401159.2N 0035039.4W	-	COV 30 NM
LOC 04 (1°E) ILS CAT I	IGE	110.900 MHz	H24	401812.7N 0034240.7W	-	045°MAG / 252 m FM THR 22.

Facility (VAR)	ID	FREQ	HR	Coordinates	ELEV/DME	Remarks
GP 04		330.800 MHz	H24	401715.1N 0034349.1W	-	3°; RDH 15 m; at 120 m FM RCL to the right in the direction of APCH.
ILS/DME 04	IGE	CH 46X	H24	401715.1N 0034349.1W	617 m	REF DME THR 04.

## LEGT AD 2.20 LOCAL AERODROME REGULATIONS

### 20.1 FOREIGN STATE AIRCRAFT

For foreign state aircraft, a PPR request is mandatory 48 hours in advance. When transporting dangerous goods, it will be requested at least 72 hours in advance. As a general rule, PPR will not be accepted within the following hours:

- V: FRI 1200 to MON 0530.
- I: FRI 1330 to MON 0630.

## LEGT AD 2.21 NOISE ABATEMENT PROCEDURES

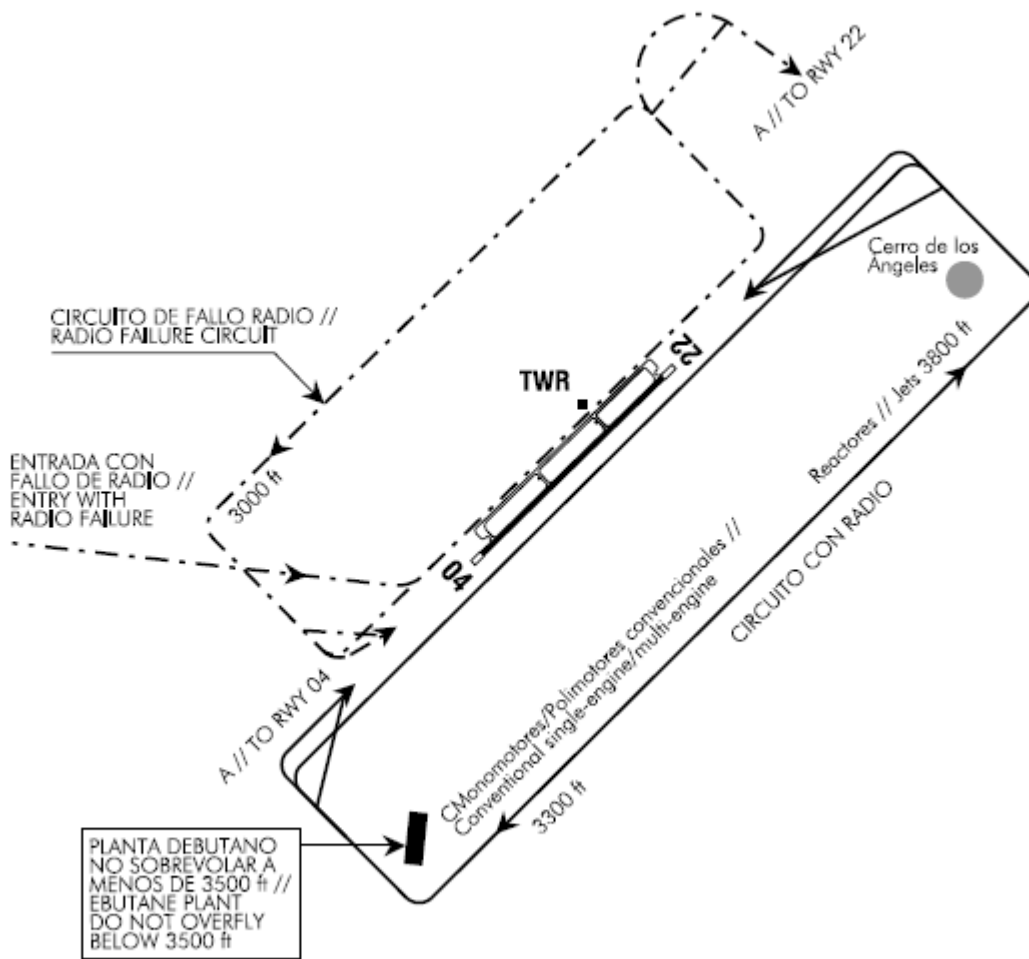
No.

## LEGT AD 2.22 FLIGHT PROCEDURES

### 22.1 ADJUSTMENT OF VERTICAL SPEED IN MADRID TMA

Aircraft in evolution shall adjust their vertical speed when approaching the assigned altitude or flight level. In these circumstances, the vertical speed shall be reduced to 1500 ft per minute when approaching a vertical distance of 1000 ft above or below the assigned altitude or flight level.

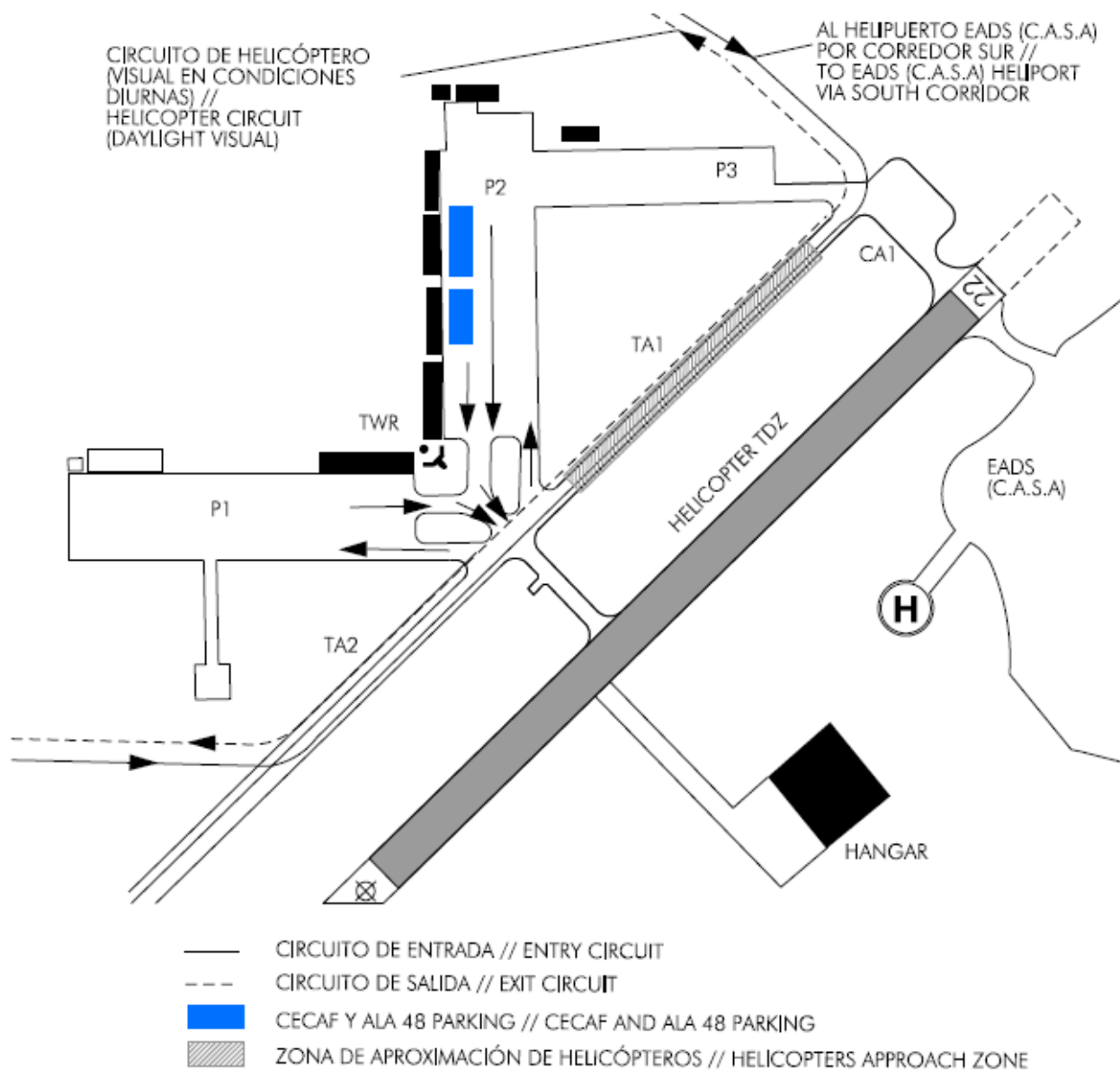
22.2 AD TRAFFIC CIRCUIT



22.3 RADIO FAILURE CIRCUIT

Aircraft with radio failure shall enter this circuit by the NW quadrant at an angle of 45° with reference to RWY 04/22. To check the RWY in use, pilots shall overfly the TWR in parallel to RWY 04/22, always keeping to the left of the TWY and between the TWY and TWR.

22.4 HELICOPTERS CIRCUIT



22.5 CIRCUIT CHARACTERISTICS:

1. Helicopters will remain between 100 ft and 200 ft AGL in the helicopter circuit.
2. Access to the helicopter circuit is through the NORTH CORRIDOR.
3. Flyover from SOUTH CORRIDOR to NORTH CORRIDOR or vice versa, will be conducted through the circuit cleared for all types of aircraft.
4. In case of special circumstances due to winds or helicopter loads, or any other reasons, pilots will accomplish the most suitable manoeuvre (with prior aerodrome control clearance), avoiding to fly at a low altitude, over parked or taxiing aircraft.
5. Aerodrome control may provide clearance for crossing the departure RWY, or any other place within the aerodrome area, when traffic allows.
6. Helicopters will head for the segment T.A.1 where contact will be established. Next they will taxi to the parking stand following TWR instructions.
7. Arrivals and departures to/from E.A.D.S. (C.A.S.A.) heliport, proceed by south corridor at 2500 ft.

LEGT AD 2.23 ADDITIONAL INFORMATION

### 23.1 ARRESTING SYSTEMS

**Nomenclature:** LEGT-01-C-B.

**Type:** RETRACTABLE BIDIRECTIONAL CABLE BARRIER.

**Location on:** RWY 04 THR+565 m/1857 ft. RWY 22 THR+1911 m/6270 ft.

**Readiness status:** Permanently available at the pilot request.

**Nomenclature:** LEGT-02-C-B.

**Type:** RETRACTABLE BIDIRECTIONAL CABLE BARRIER.

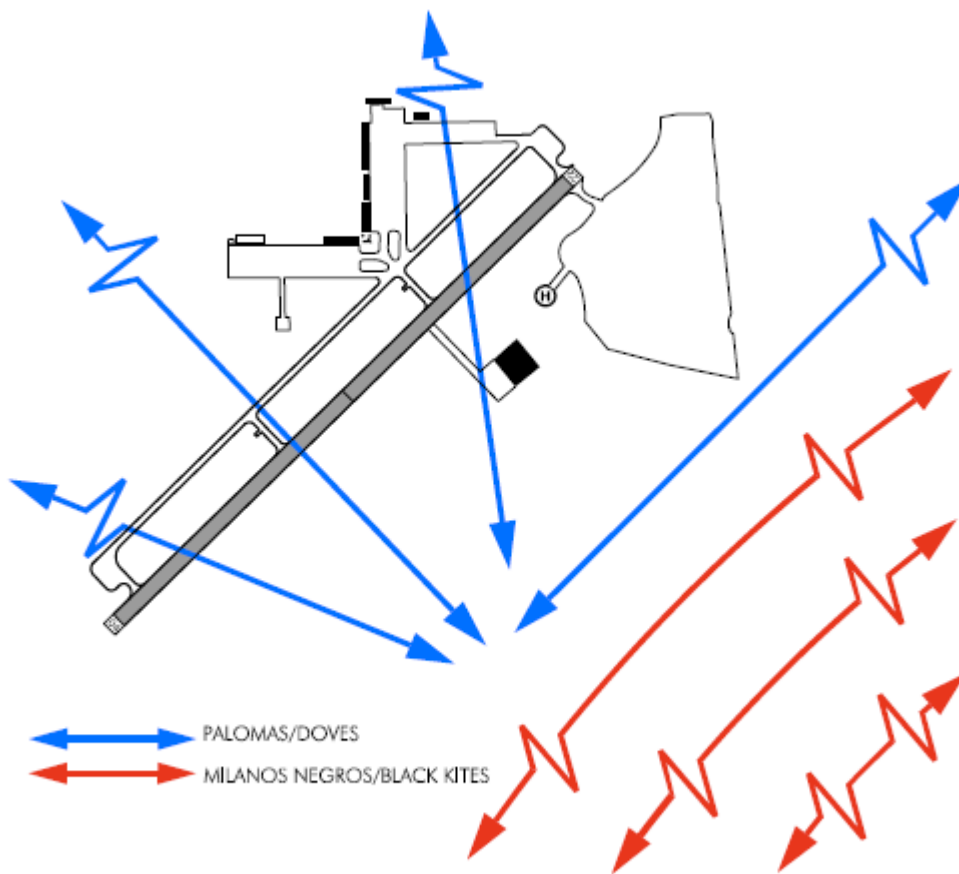
**Location on:** RWY 04 THR+1946 m/6385 ft. RWY 22 THR+530 m/1742 ft.

**Readiness status:** Permanently available at the pilot request.

### 23.2 BIRD CONCENTRATION

Caution is recommended due to bird concentration over RWY 04/22.

### 23.3 MOVEMENT OF BIRDS



### LEGT AD 2.24 AERONAUTICAL CHARTS RELATED TO AN AERODROME

The list of charts related to the aerodrome can be found on the link below:

<https://aip.enaire.es/AIP/#LEGT>

### LEGT AD 2.25 VISUAL SEGMENT SURFACE (VSS) PENETRATION

Not applicable.